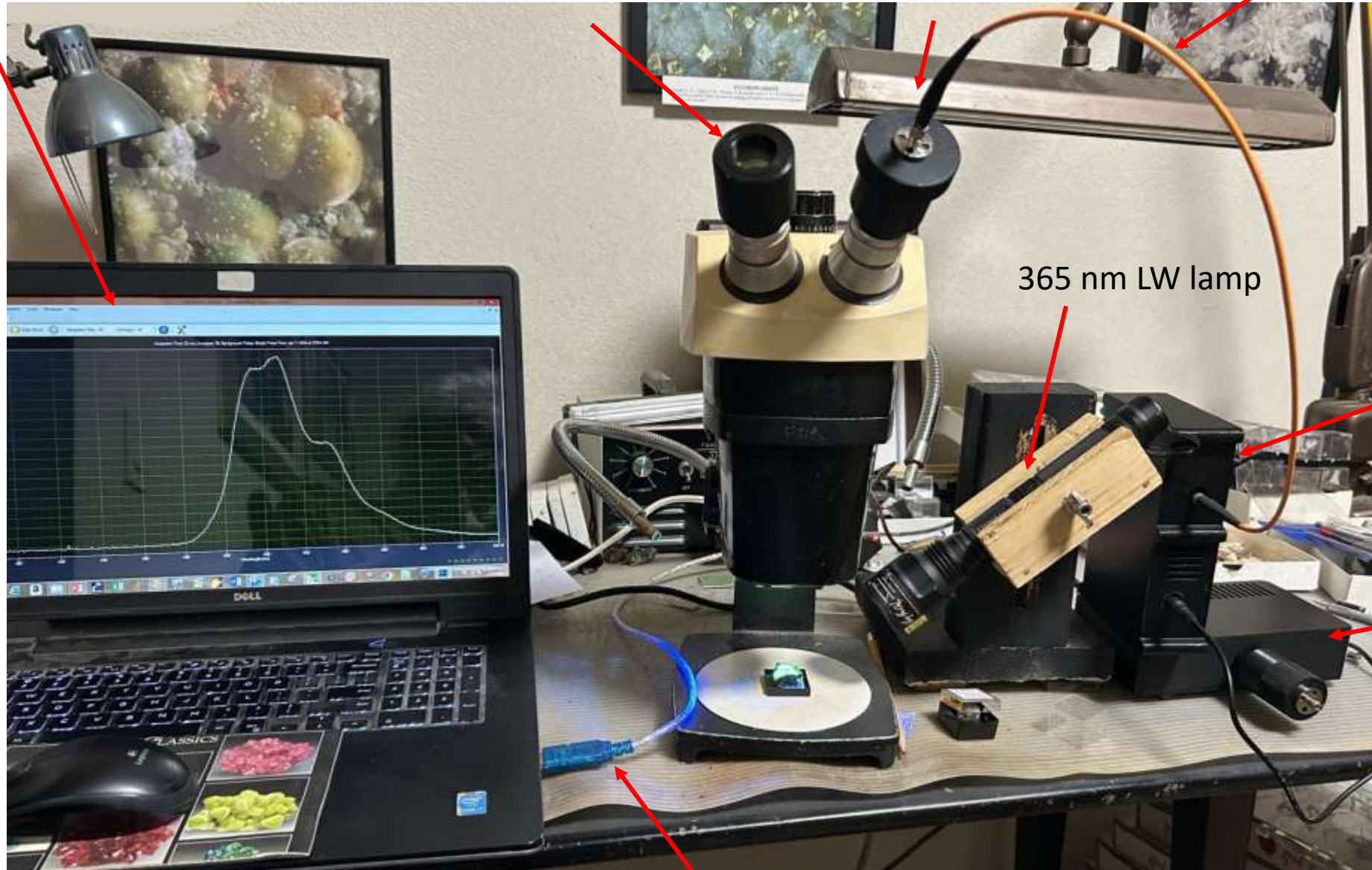


Spectrum Studio Software

Eyepiece Adapter
with 410nm
longpass filter

Eyepiece Fiber
Coupler with 410nm
longpass filter

Fiber Optic Cable

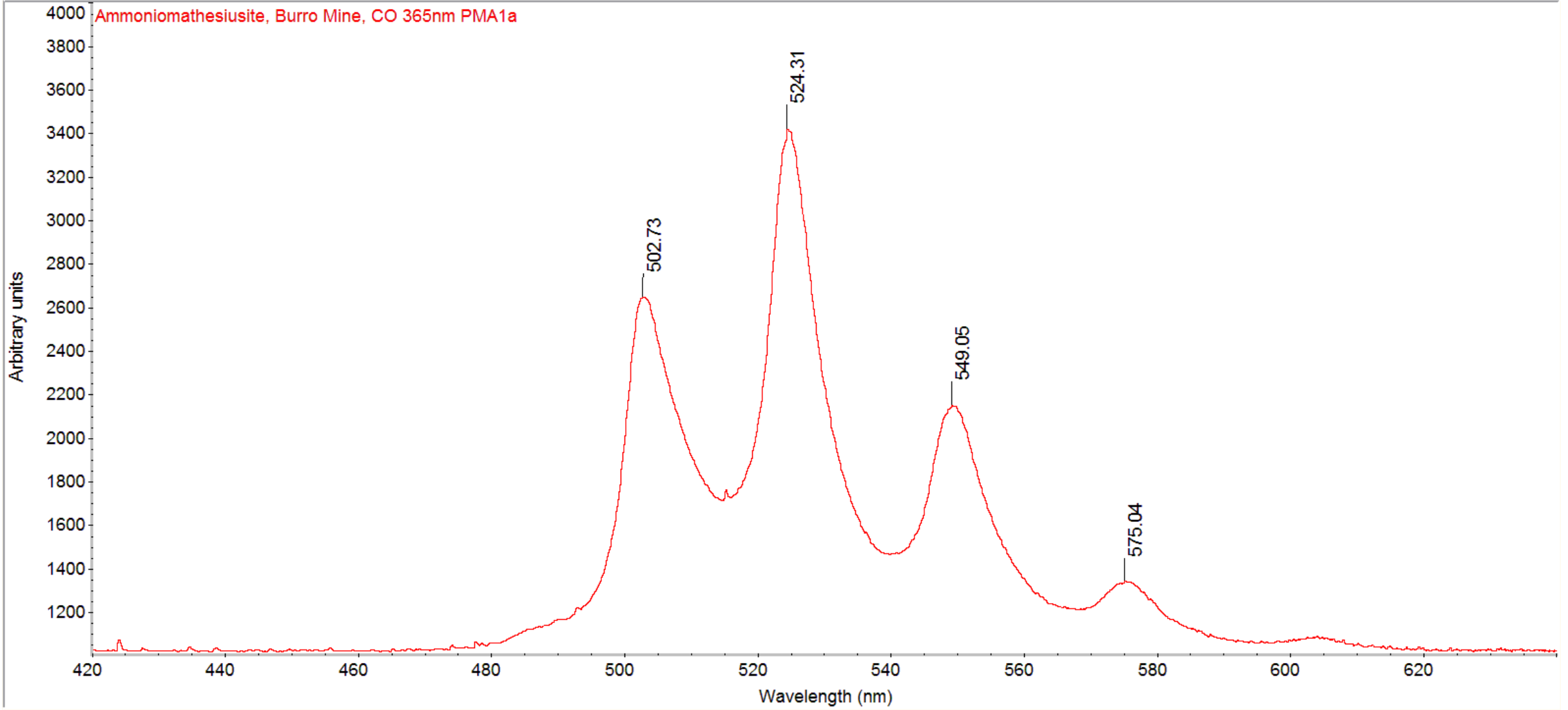


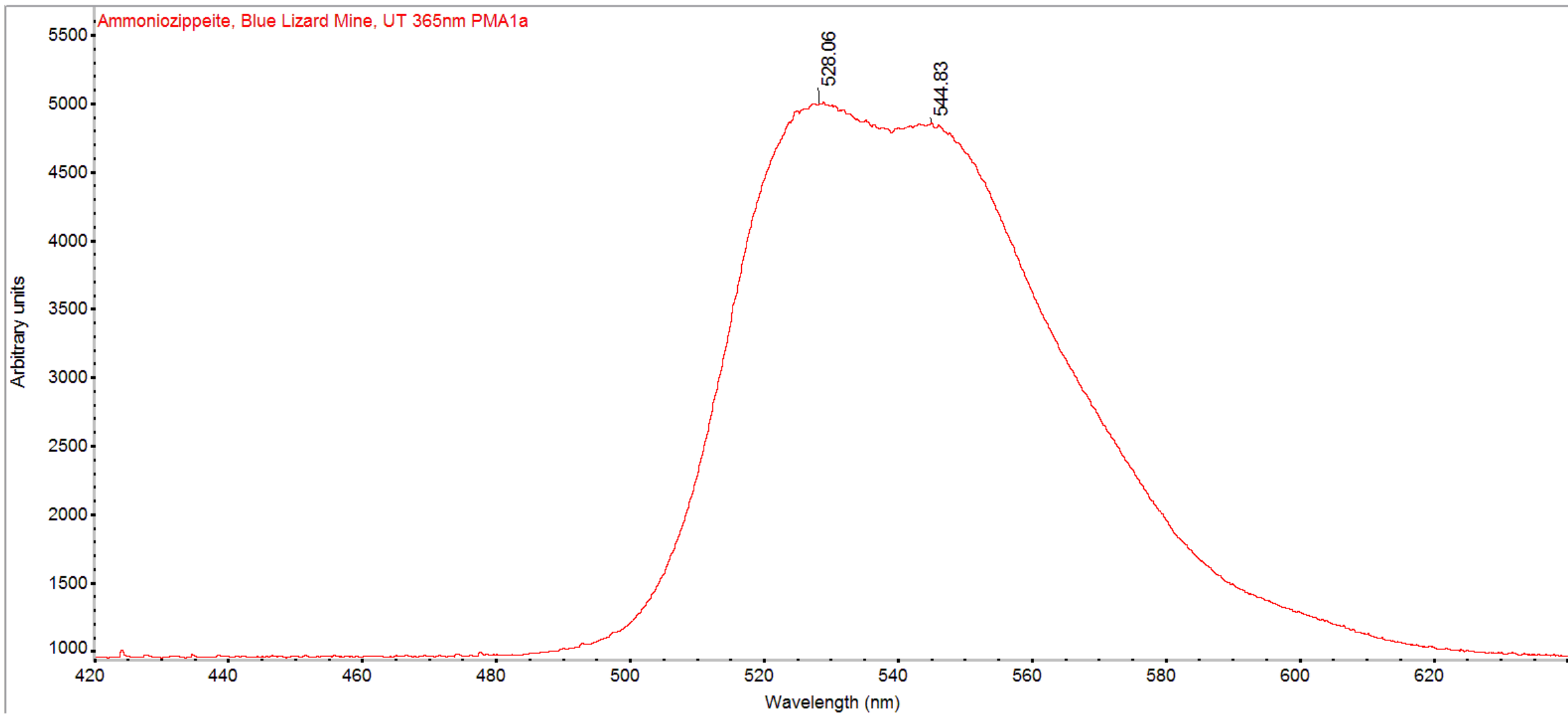
365 nm LW lamp

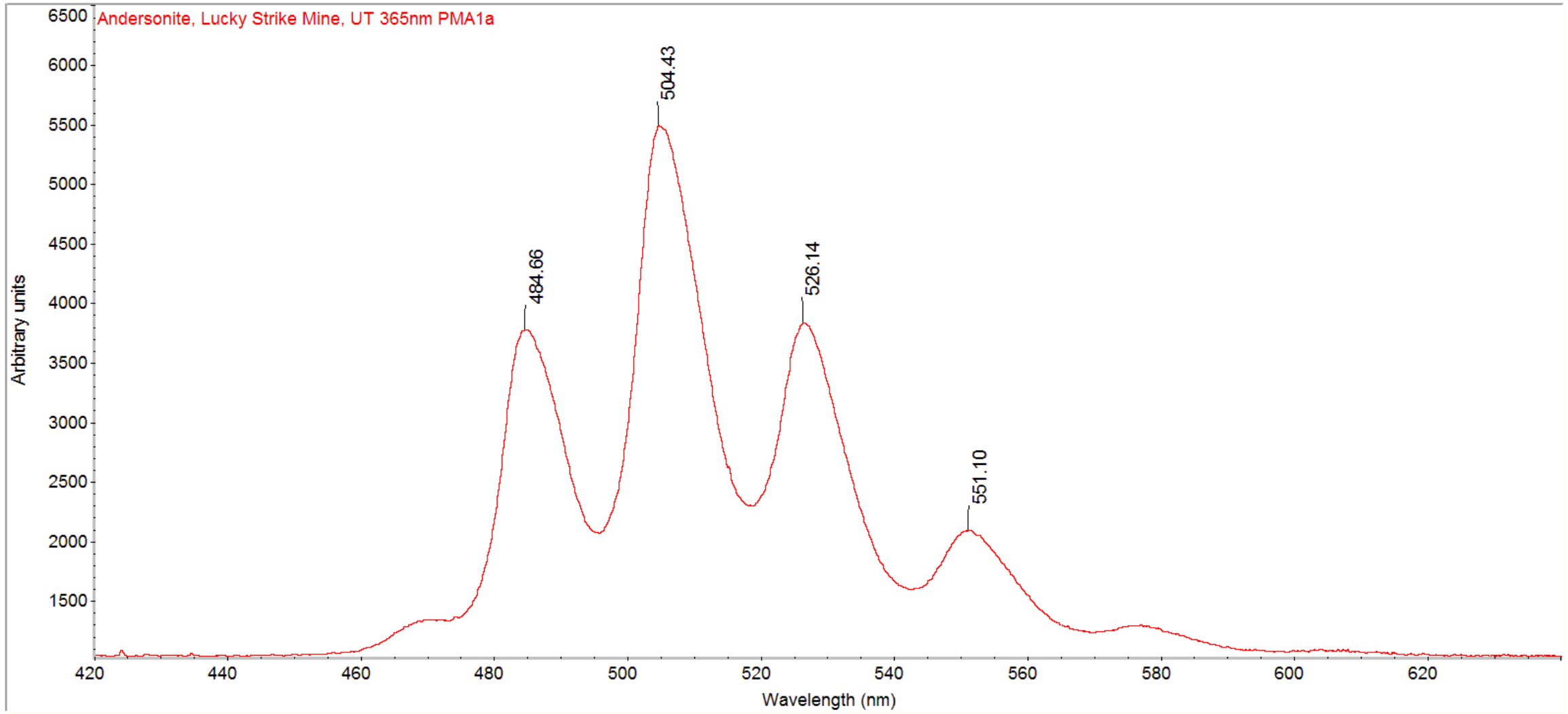
B&W
Spectrometer

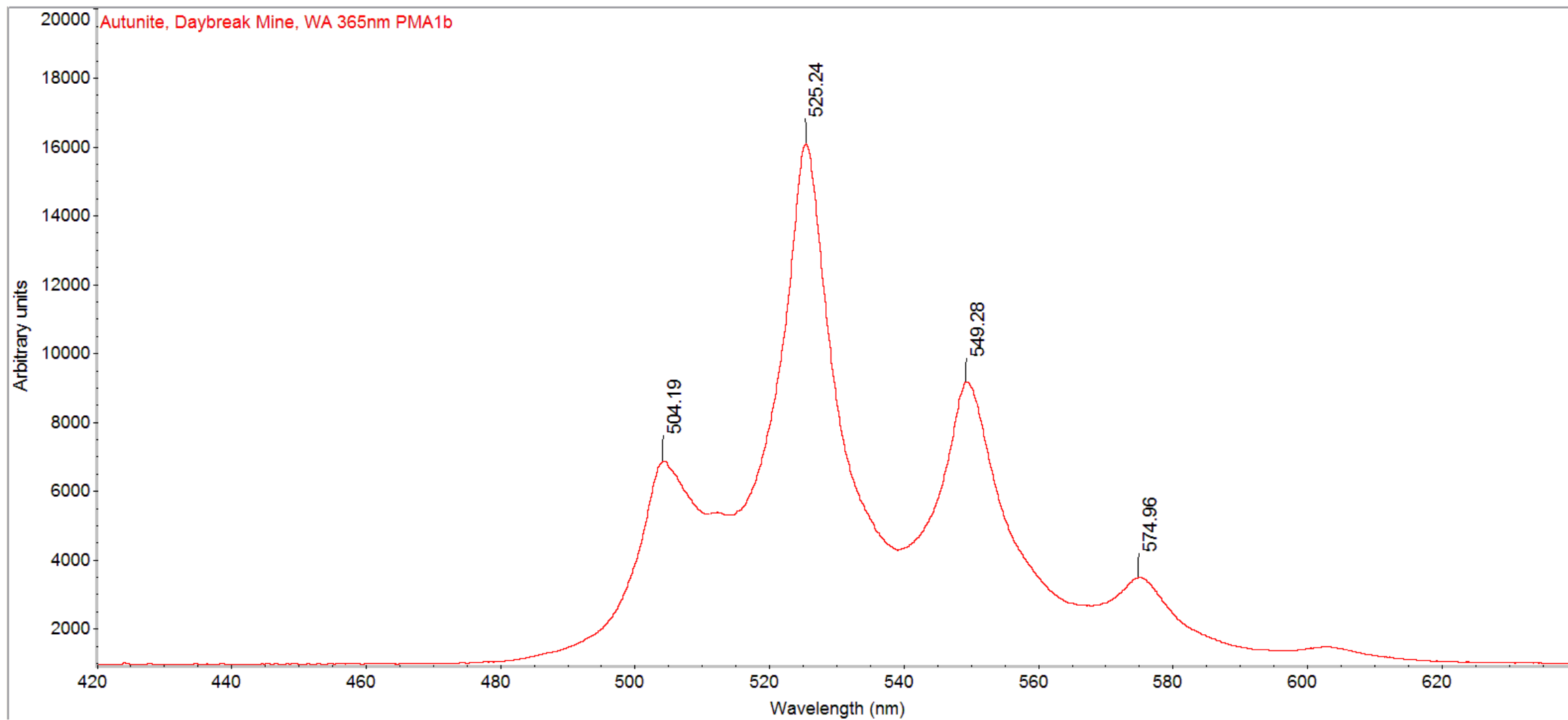
Hg
calibration
lamp

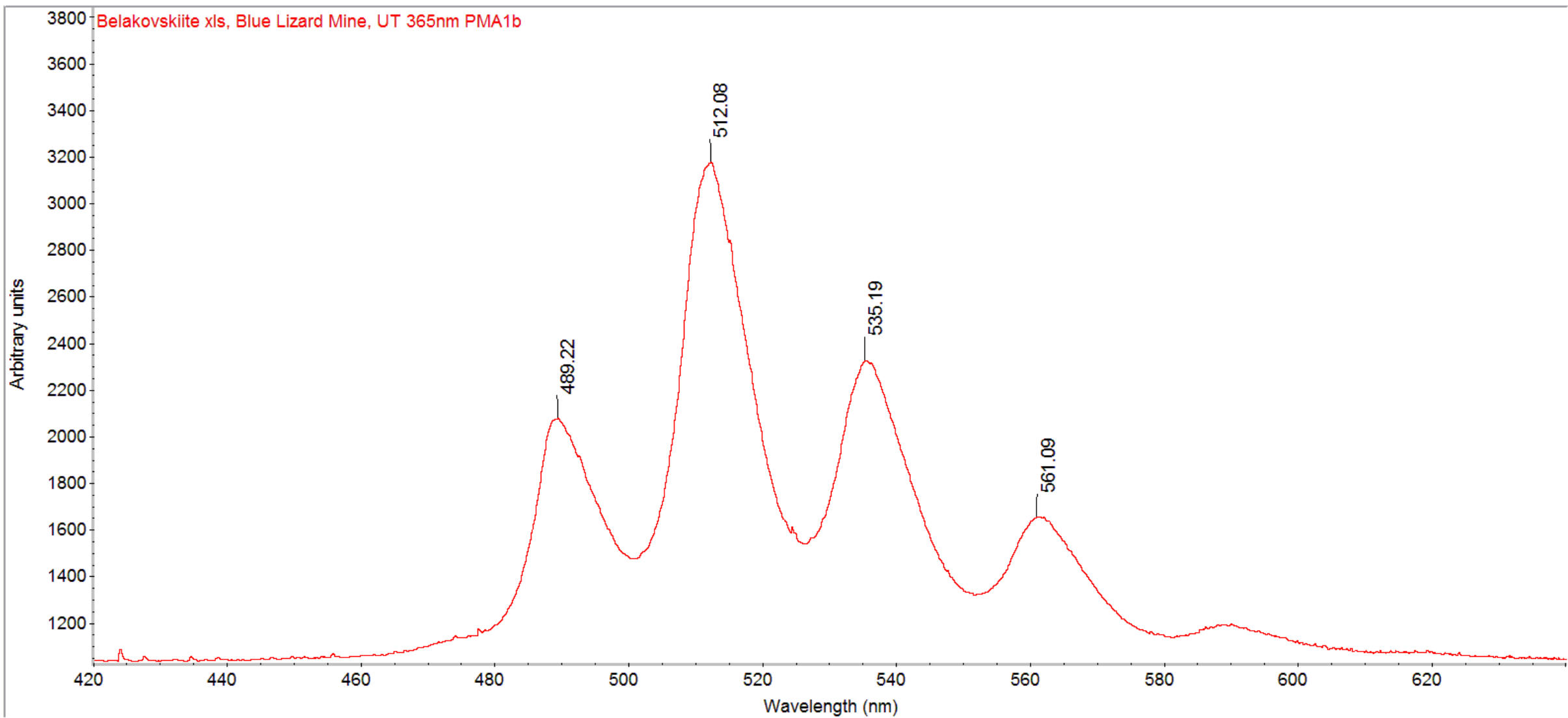
USB Spectrometer Input

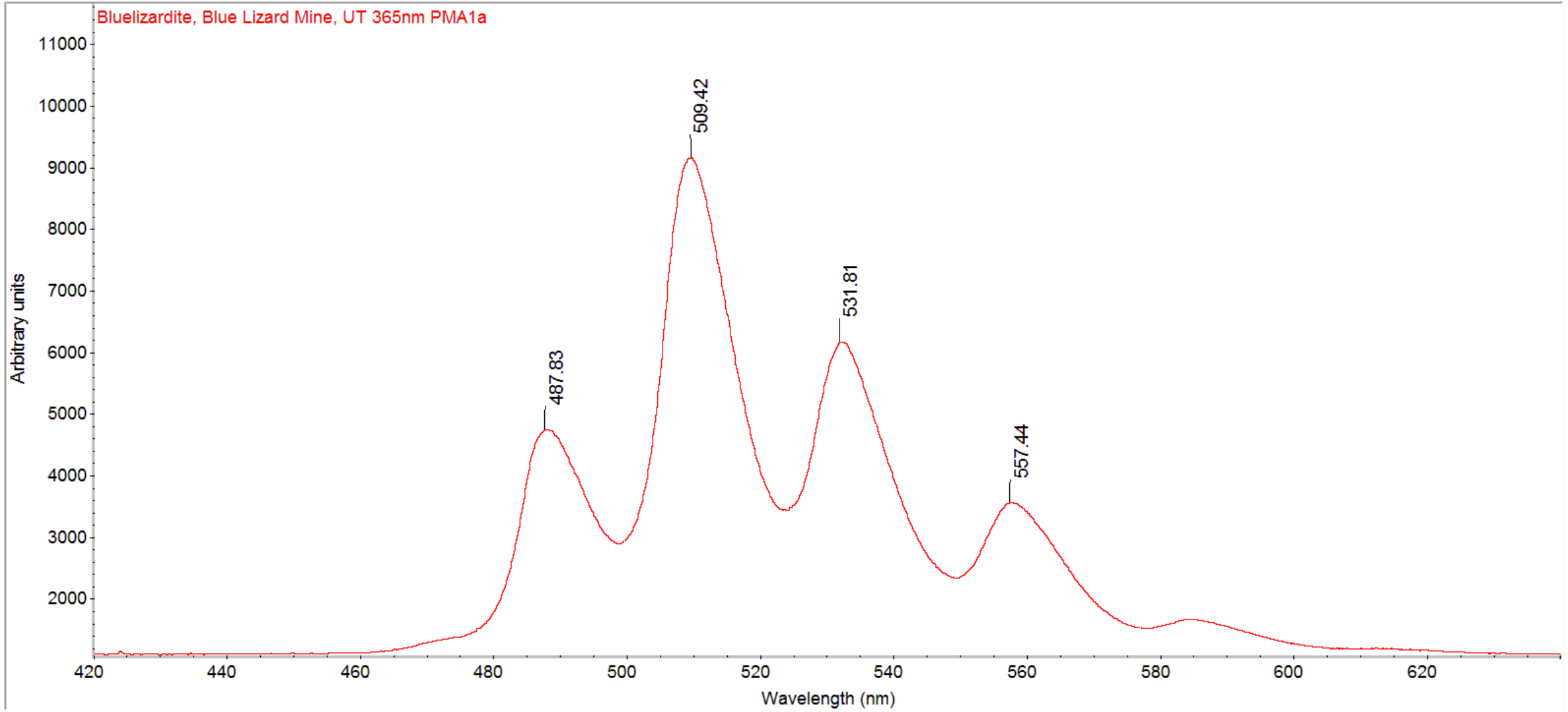


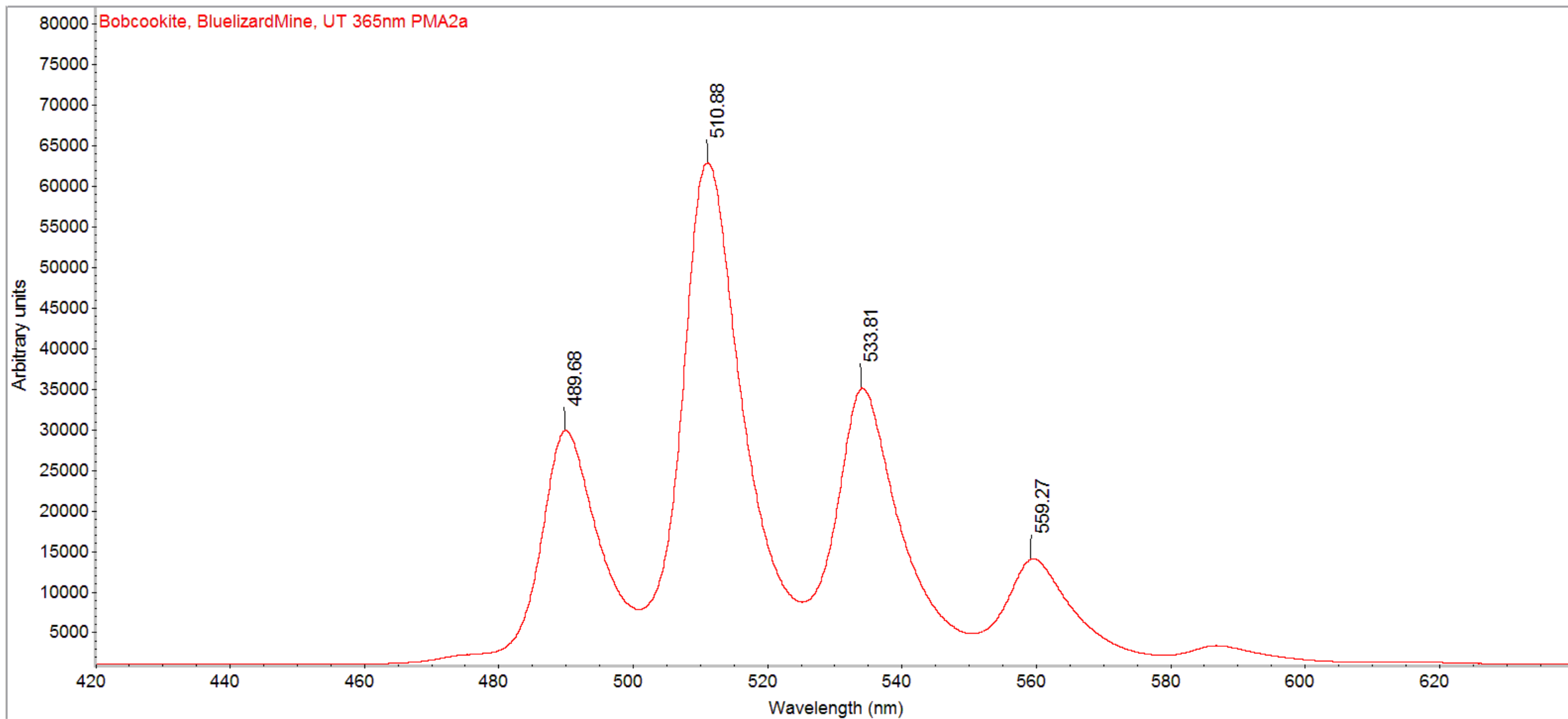


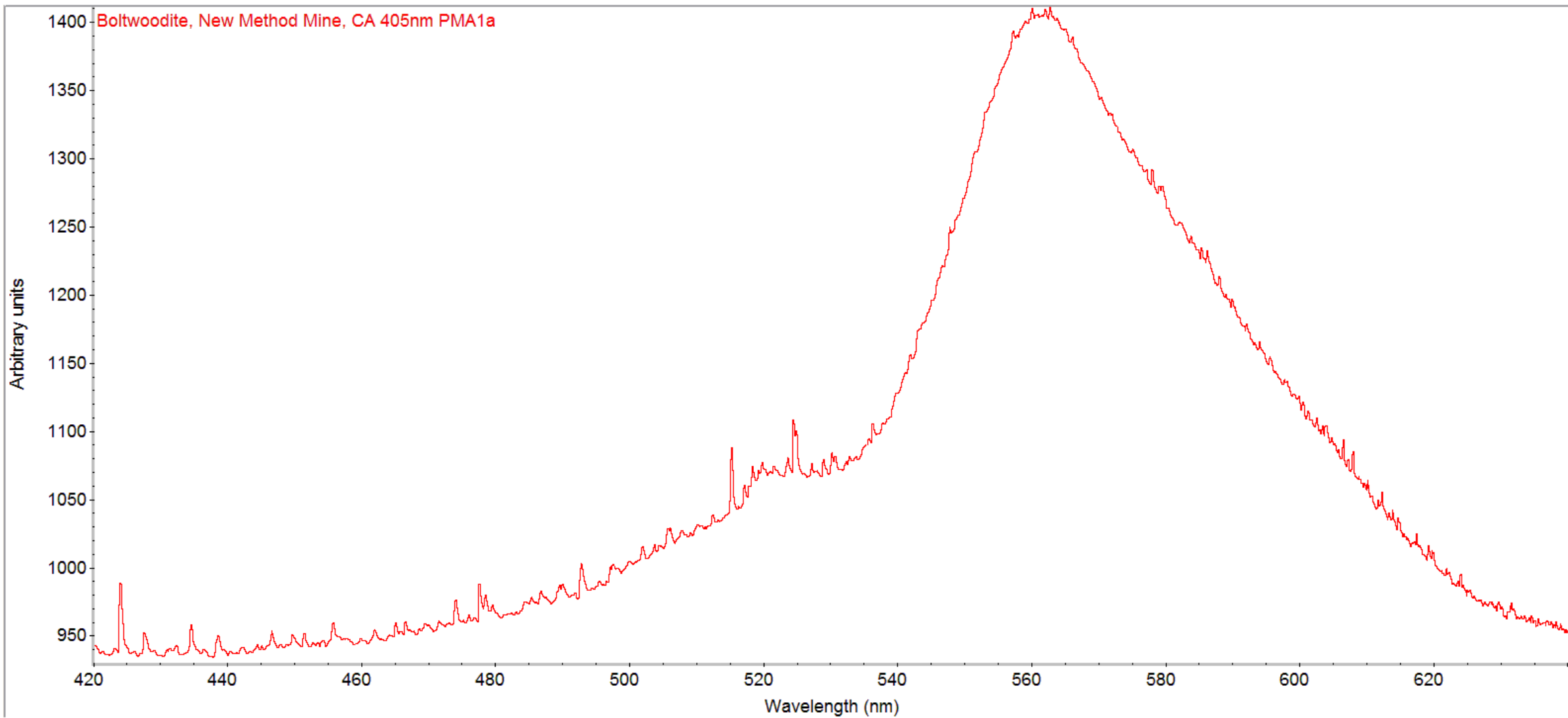




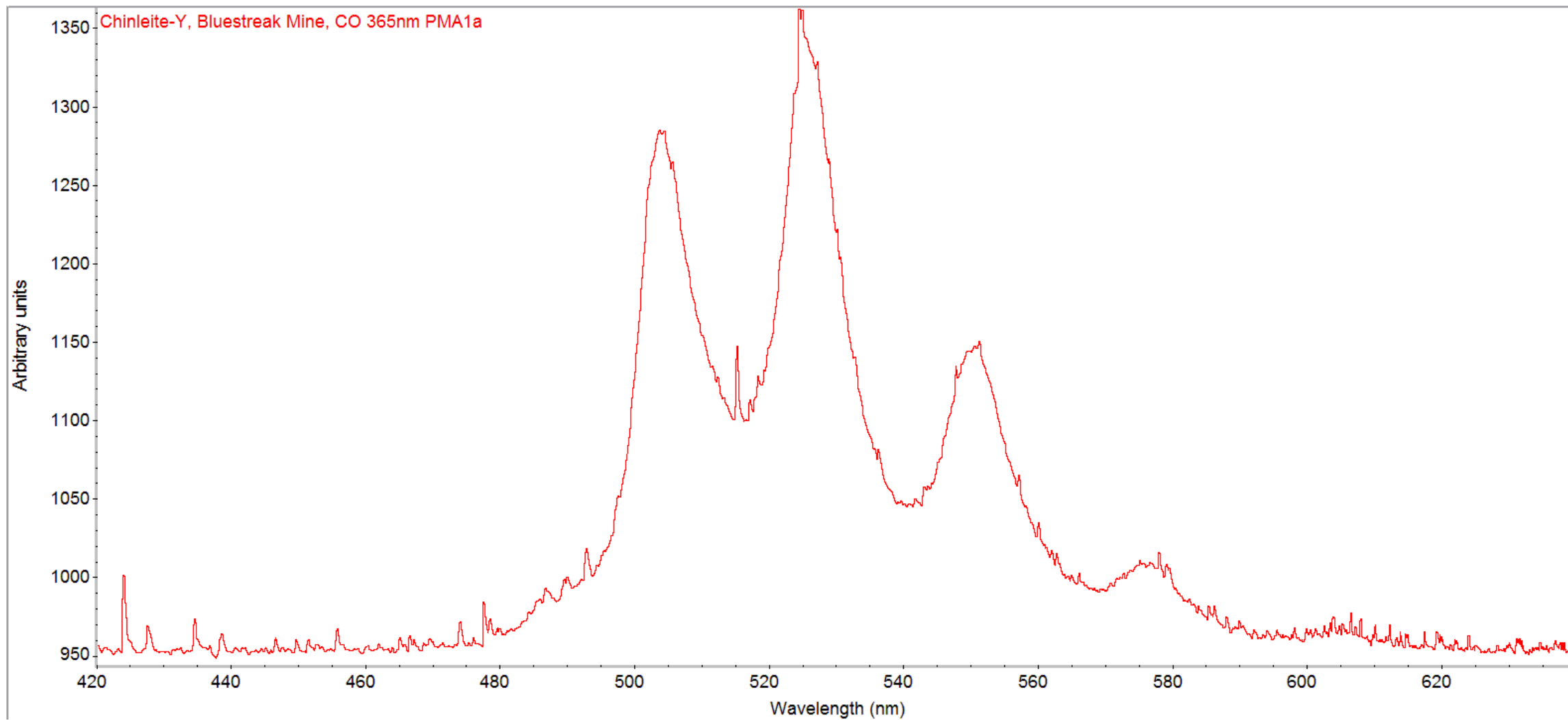




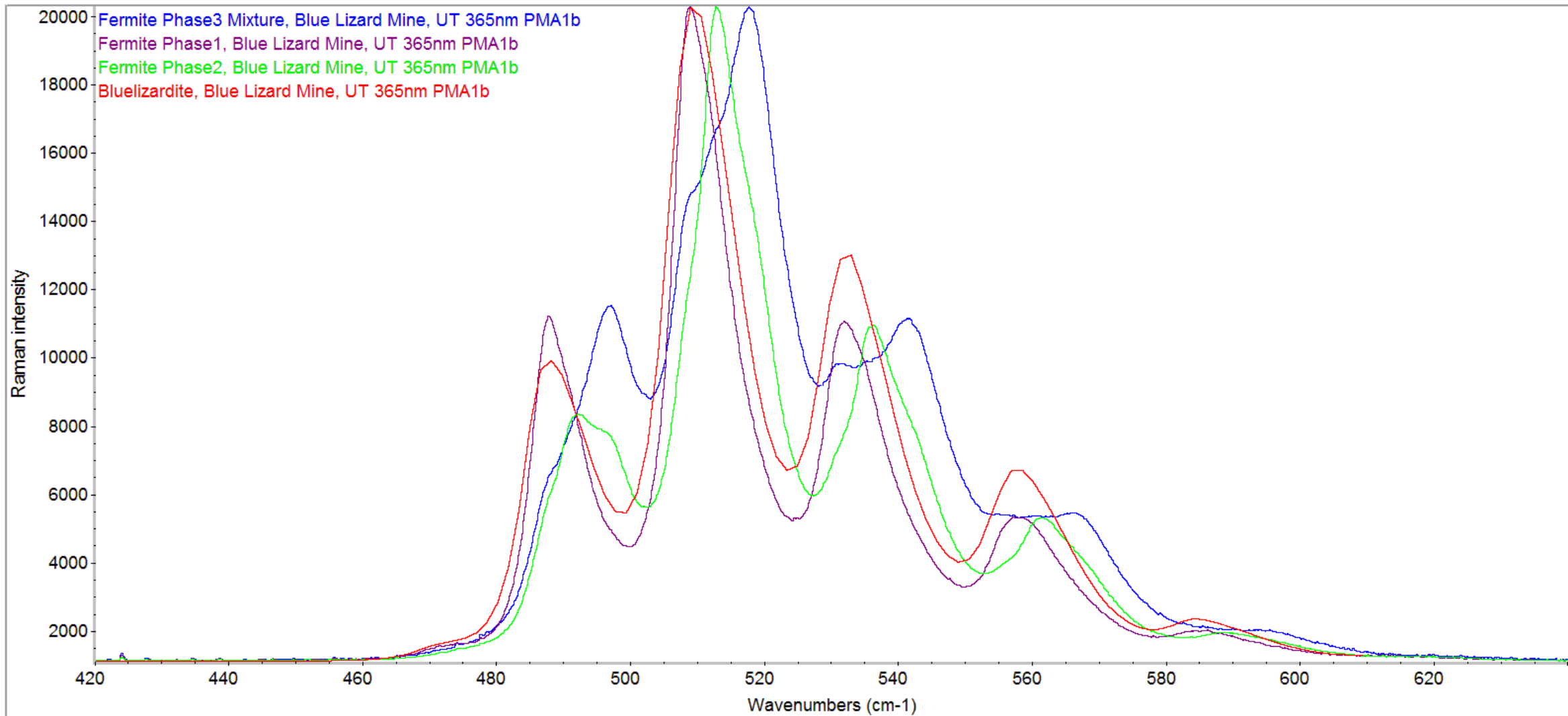




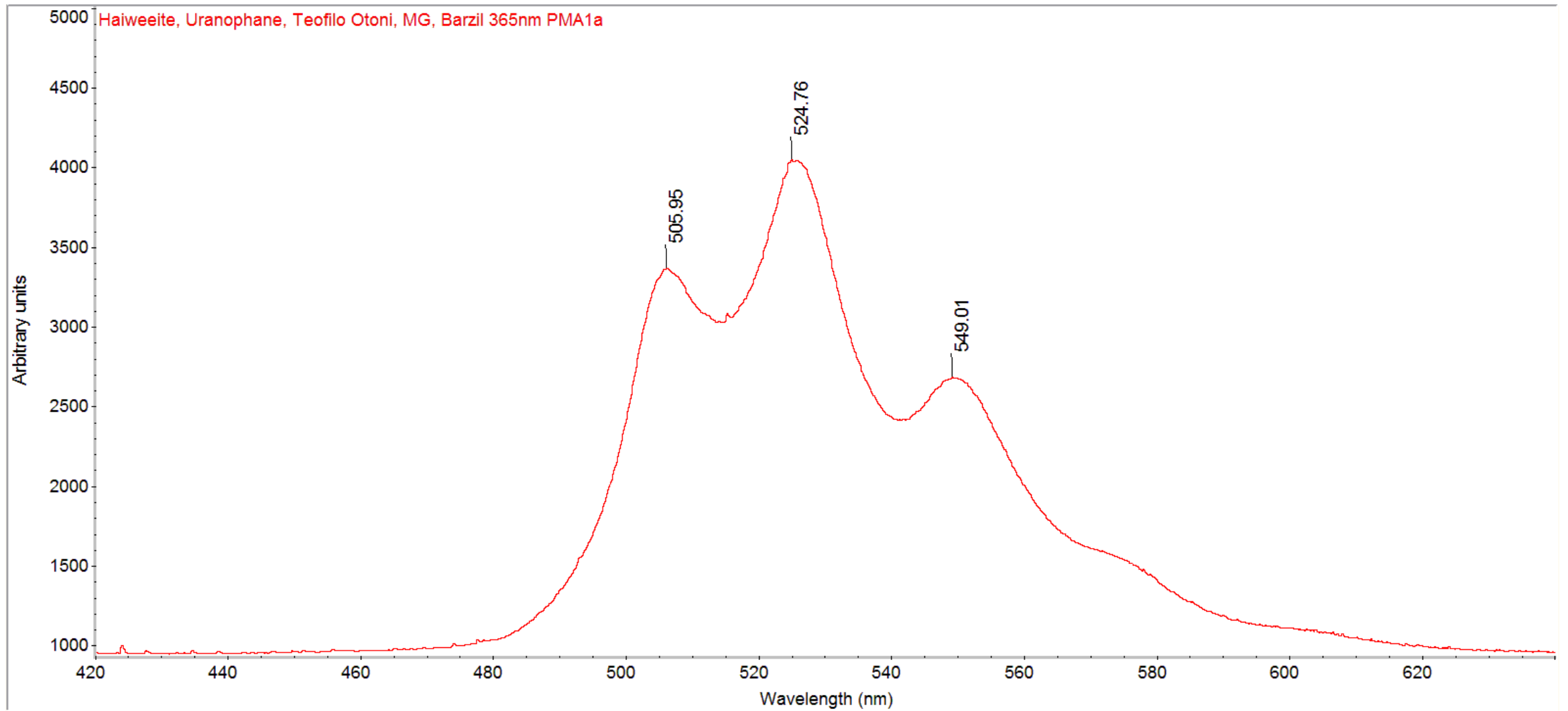
Is there some uranyl substitution in Chinleite-Y or is this some other phase on the sample?

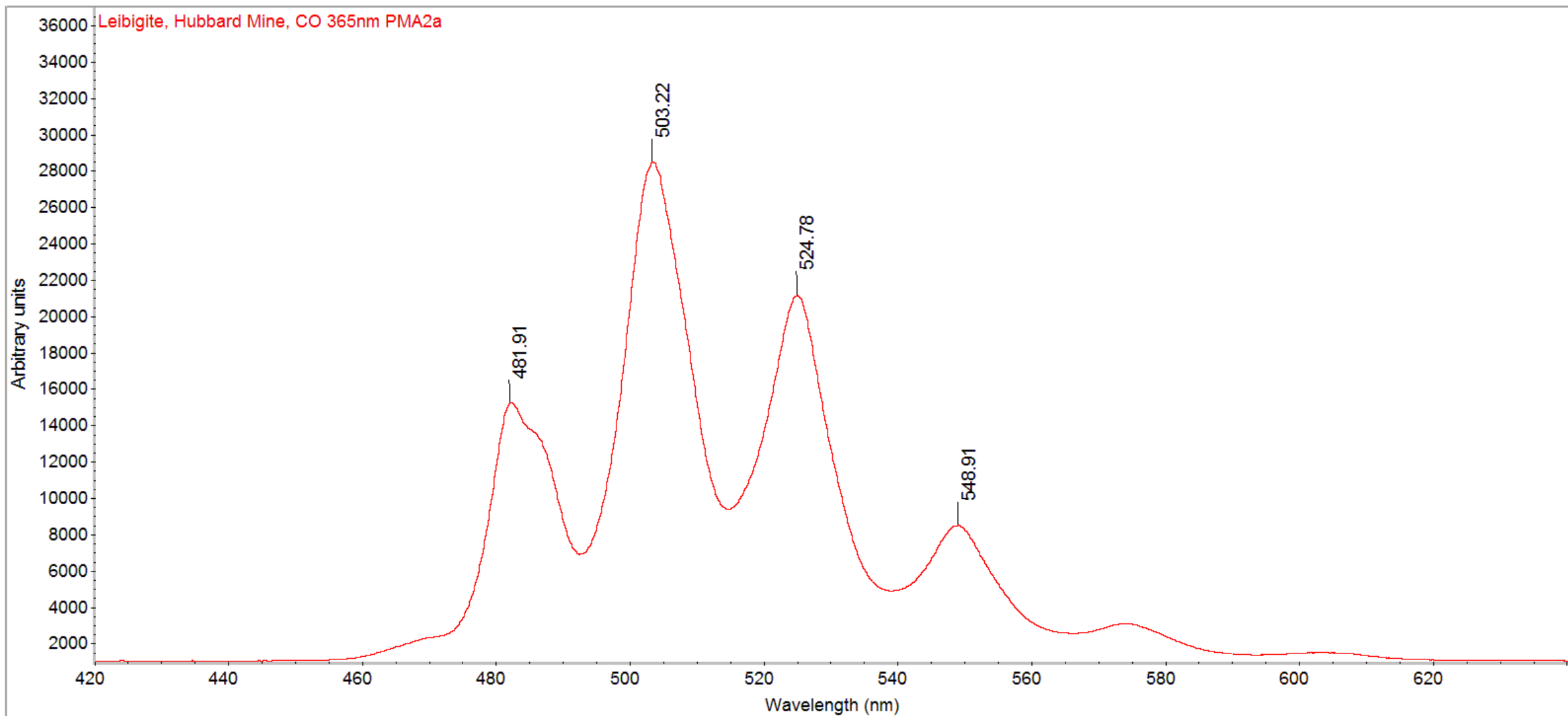


The fermiite sample is obviously impure (3 phases?). Bluelizardite is probably one of the phases present?



Not sure which phase is dominant?





Needs further investigation

