

Software Information

Trademarks

The product names and company names described in this CD-ROM are the registered trademarks of the individual companies.

Copyright

Canon Inc. retains the copyright to all data contained on this CD-ROM.

Reproduction, publication (including on the World Wide Web), alteration, translation into another language, or other use of the data in whole or part, contained on this CD-ROM without the written consent of Canon Inc., is prohibited.

CONTENTS

	Page
Software Information	
1. EOS DIGITAL SOLUTION DISK Ver. 11	1
1.1 Overview	1
1.2 CD Configuration	1
1.3 Solution Disk Software Configuration	1
1.4 Overview and Main Functions of the Software Applications	4
1.5 System Requirements	18
1.6 Supported Languages	19

1. EOS DIGITAL SOLUTION DISK Ver. 11

1.1 Overview

Starting with the EOS DIGITAL Solution Disk Ver.10 bundled with the EOS DIGITAL REBEL XT/350D DIGITAL to be released in Spring 2005, the core software has been changed to ZoomBrowser EX/ImageBrowser to cater to a broader range of users. The software configuration has also been changed to include Digital Photo Professional, which was provided on a separate CD through to 2004.

The EOS DIGITAL Solution Disk Ver.11 CD bundled with the EOS 5D and EOS-1D MarkII N continues along this path, providing software applications that are upgraded in line with user requirements.

1.2 CD Configuration

In addition to the EOS DIGITAL Solution Disk Ver.11 CD containing the EOS DIGITAL software applications, a CD containing the Software Instruction Manuals in PDF format is also bundled with the EOS 5D and EOS-1D MarkII N (Table 001).

The current plan is not to bundle a CD containing third-party image editing software.

Table 001 CD configuration

CD Types and Content	EOS 5D	EOS-1D MarkII N
EOS DIGITAL Solution Disk Ver. 11 • Contains the software applications for the EOS 5D and EOS-1D MarkII N. • Win/Mac hybrid version	○	○
Software Instruction Manual CD (PDF) • Contains the EOS DIGITAL Software Instruction Manual and Digital Photo Professional Instruction Manual as electronic manuals in PDF format. • Win/Mac hybrid version	○	○

1.3 Solution Disk Software Configuration

As shown in Table 002, in the software configuration for Solution Disk, images are viewed and edited using ZoomBrowser EX/ImageBrowser, which is the core software application. In addition, software functions required for use with digital cameras, such as image downloading, specifying camera settings, remote shooting, image layout and printing, RAW image processing and image merging, can all be used by linking with or activating the corresponding software application from ZoomBrowser EX/ImageBrowser (Fig. 001).

While Digital Photo Professional was originally intended as a standalone application, it can be linked with EOS Capture to cater to the needs of professional users.

Table 002 Software configuration

Software		Version	Windows OS	Mac OS
ZoomBrowser EX		5.5	Yes	
ImageBrowser		5.5		
CameraWindow		5.3	Yes	Yes
PhotoRecord		2.2	Yes	
RAW Image Task		2.2	Yes	
EOS Capture		1.5	Yes	Yes
PhotoStitch		3.1	Yes	Yes
Digital Photo Professional		2.0	Yes	Yes
WIA Driver	TWAIN Driver		Yes*	
PTP WIA Driver	PTP TWAIN Drive		Yes*	

* Drivers for the EOS 5D and EOS-1D MarkII N are planned to be included.

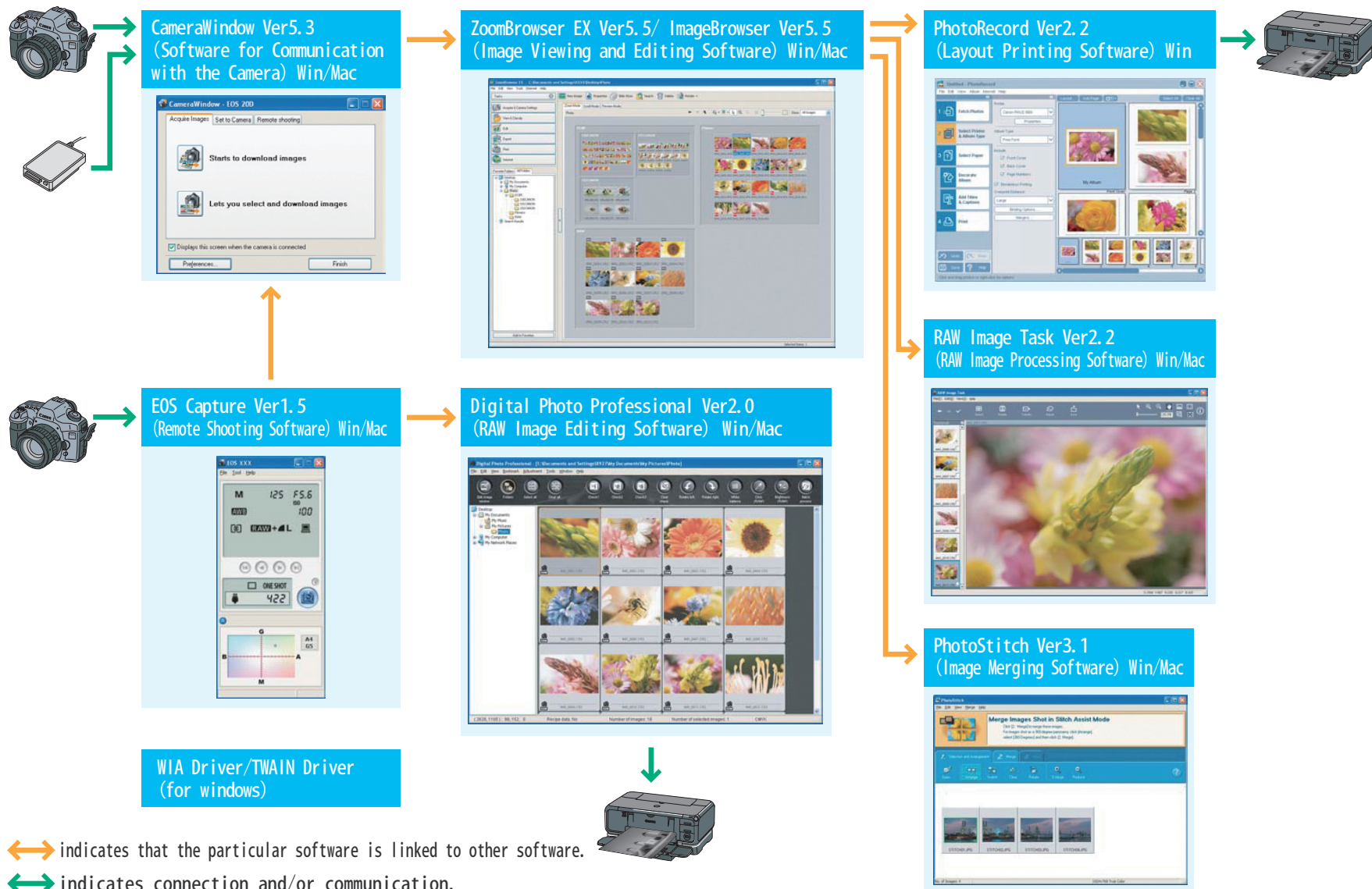


Fig. 001 Software linkages

1.4 Overview and Main Functions of the Software Applications

1) ZoomBrowser EX Ver 5.5 (Windows) / ImageBrowser Ver 5.5 (Macintosh)

(1) Overview and Main Changes

Built around version 5.1, this image viewing and editing software incorporates the major function additions and modifications described below to expand its range of supported cameras and better reflect the demands of the market (Fig. 002).

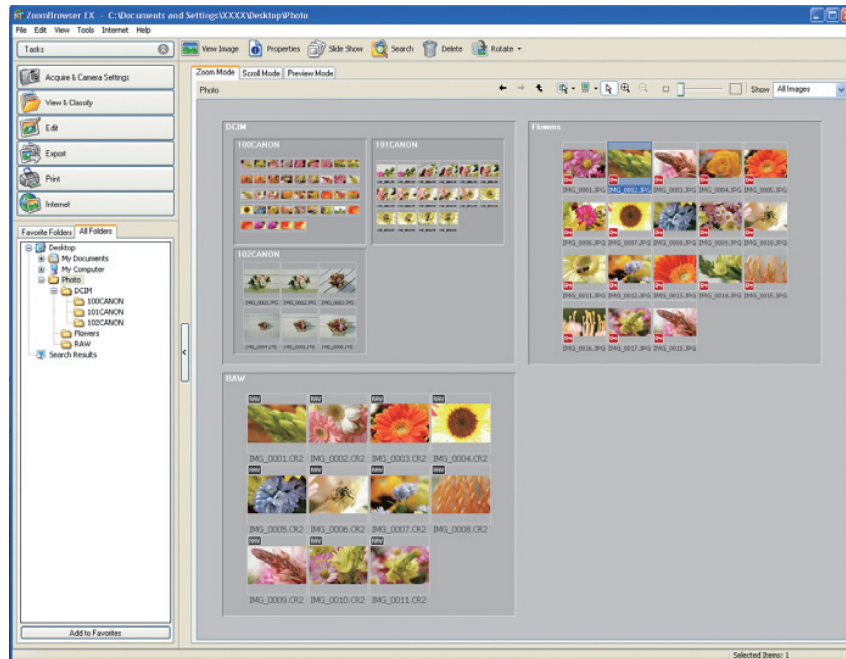


Fig. 002 ZoomBrowser EX Ver 5.5 main window (zoom mode)

- Supported RAW image types expanded to include EOS 5D and EOS-1D MarkII N RAW images.
- Added or revised printing functions
 - A new "Print 1 copy" button has been added to the print tasks to provide ZoomBrowser EX with its own printing function (Fig. 003, 004).

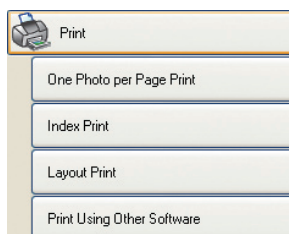


Fig. 003 Print task buttons

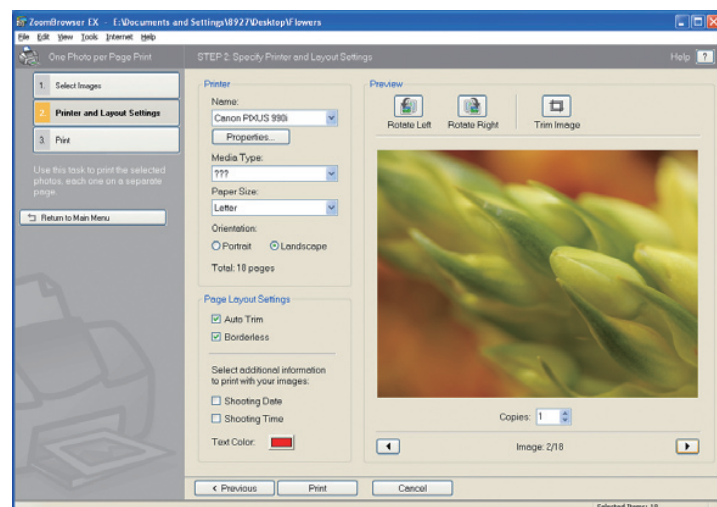


Fig. 004 Print 1 copy window

- A new "Print index" function has been provided in ZoomBrowser EX to enable standalone printing from ZoomBrowser EX (Fig. 005).
 - * In the "Print 1 copy" and "Print index" functions, images are printed directly from ZoomBrowser EX and not by linking with PhotoRecord.
 - * The "Print 1 copy" function can also be linked with Easy-PhotoPrint for printing.
 - * As previously, "Layout printing" is performed by linking up with PhotoRecord.

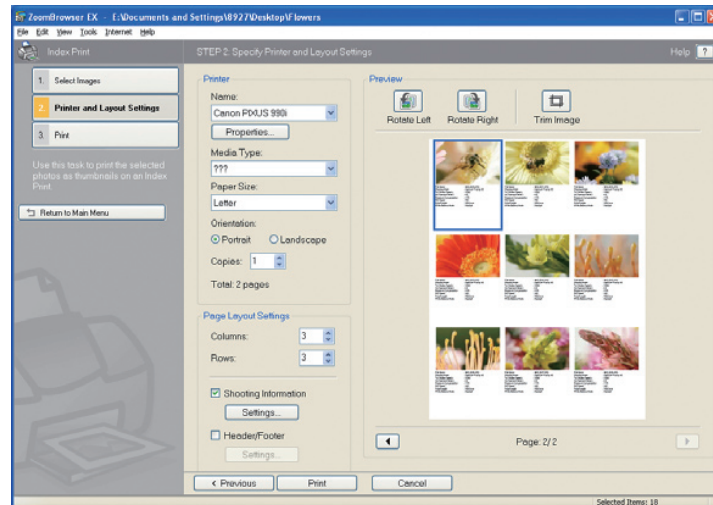


Fig. 005 Print index window

- Added or modified operability functions
 - Marking of image folders for images downloaded from the camera (Fig. 006/highlighted in red frame).
 - "Copy file" and "Move file" added to the contextual (right-click) menu.
 - "Next" and "Back" buttons and explanatory text and illustrations added to the Task window (Fig. 007).
 - Modified scroll mode folder bar.
 - Tool tips shown in the toolbar.

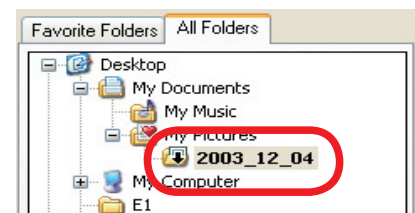


Fig. 006 Folder marking

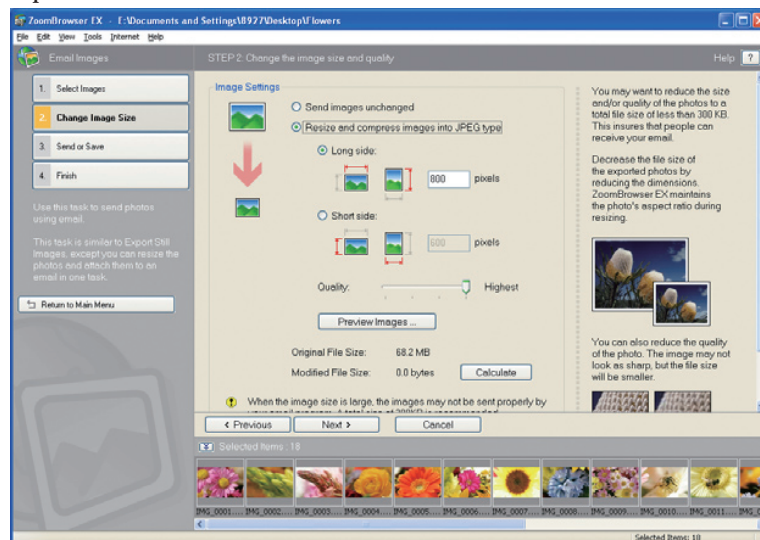


Fig. 007 Task window

● Additional Viewer window functions

- Image editing using levels adjustment, tone curve adjustment, sharpness and automatic image adjustment functions.
- Text entry
- Shooting information displayed on images (Fig. 008/highlighted in red frame).
- Printing using a Print (Print 1 copy) button

Except for these enhancements, the main functions are unchanged from version 5.1.

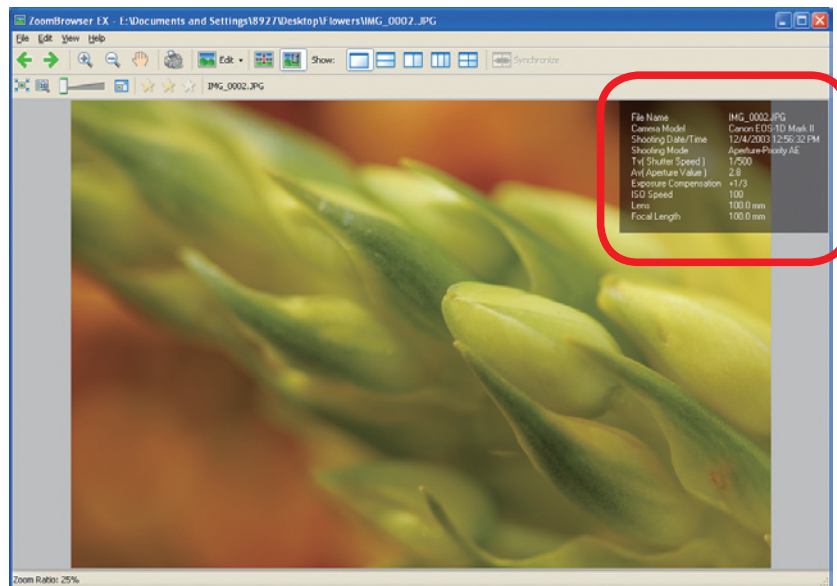


Fig. 008 Shooting information display in Viewer window

(2) Main functions in version 5.5 (functions added or modified in version 5.5 shown in blue)

- Basic functions and ease of operation aimed squarely at novice to high-end amateur users who primarily shoot JPEG images.
- A simple and straightforward interface built around task buttons and wizards with novice users in mind.
Note: Operations in ImageBrowser are menu-based.
- Links up with other applications to provide a continuous workflow from image downloading and viewing right through to editing and printing.
- Image display modes to suit a range of applications, including 3 types of image list display (Zoom, [Scroll](#) and Preview modes), slideshows and individual image display or multiple-image comparison display using the [Viewer window](#).
- Image classification by the shooting date/time, batch file renaming and image organization by assigning "keywords" or a "Rating".
- Image search by shooting or modification date, by assigned a "Rating", by comment or by keyword.
- Extensive range of JPEG image editing functions (image correction, trimming, red-eye reduction, [levels adjustment](#), [tone curve adjustment](#), [sharpness](#) and [automatic image adjustment](#)), image rotation (left or right in 90° increments or 180° rotation) and image transfer to third-party image editing software.
- Printing functions for a range of applications, including [Print 1 copy](#), [Print index](#) and Layout printing.

- Full suite of image writing options, including converting and saving JPEG images in BMP or TIFF type, writing shooting information, writing images as screen savers or wallpaper and writing images to CD-R/CD-RW.
- Linkage with e-mail software to send images as e-mail attachments and connection to Canon iIMAGE GATEWAY.
- Support for color management systems.
- Support for 2 work color spaces (sRGB and Adobe RGB).

2) CameraWindow Ver 5.3 (Windows / Macintosh)

(1) Overview and Main Changes

Built around version 5.1, this camera communication software incorporates the major function additions and modifications described below to expand its range of supported cameras and better reflect the demands of the market (Fig. 009).

- Addition of the EOS 5D and EOS-1D MarkII N to the list of supported cameras.
- Support for PTP connection to the EOS 5D.

* CameraWindow version 5.3 supports the PTP function on the EOS 5D or EOS DIGITAL REBEL XT/350D DIGITAL, enabling images to be downloaded and the camera settings to be specified regardless of whether the camera's communication setting is "Print/PTP" or "PC connection".

* Because EOS Capture does not support the PTP function, it cannot be used when the camera's communication setting is "Print/PTP", even with an EOS DIGITAL REBEL XT/350D DIGITAL or EOS 5D equipped with the PTP function supported by CameraWindow version 5.3. Consequently, the camera's communication setting should be set to "PC connection" when using EOS Capture.

* Because CameraWindow version 5.3 does not support the PTP function on the EOS 20D or EOS DIGITAL REBEL/300D DIGITAL, communication with the camera is not possible using the "PTP" camera communication setting. Consequently, to communicate with the camera for tasks such as image downloading, specifying camera settings or remote shooting using EOS Capture, select "Normal" as the communication setting on the camera.

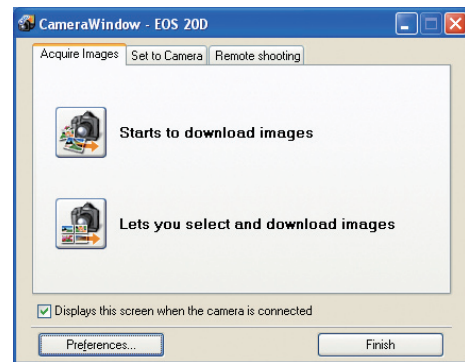


Fig. 009 CameraWindow Ver5.3

- Addition of a camera settings function for EOS-1D series cameras (including the EOS-1D MarkII N) in the Camera settings window, accessed by pressing the "Check/modify camera settings" button (Fig. 010).

Except for these enhancements, the main functions are unchanged from version 5.1.

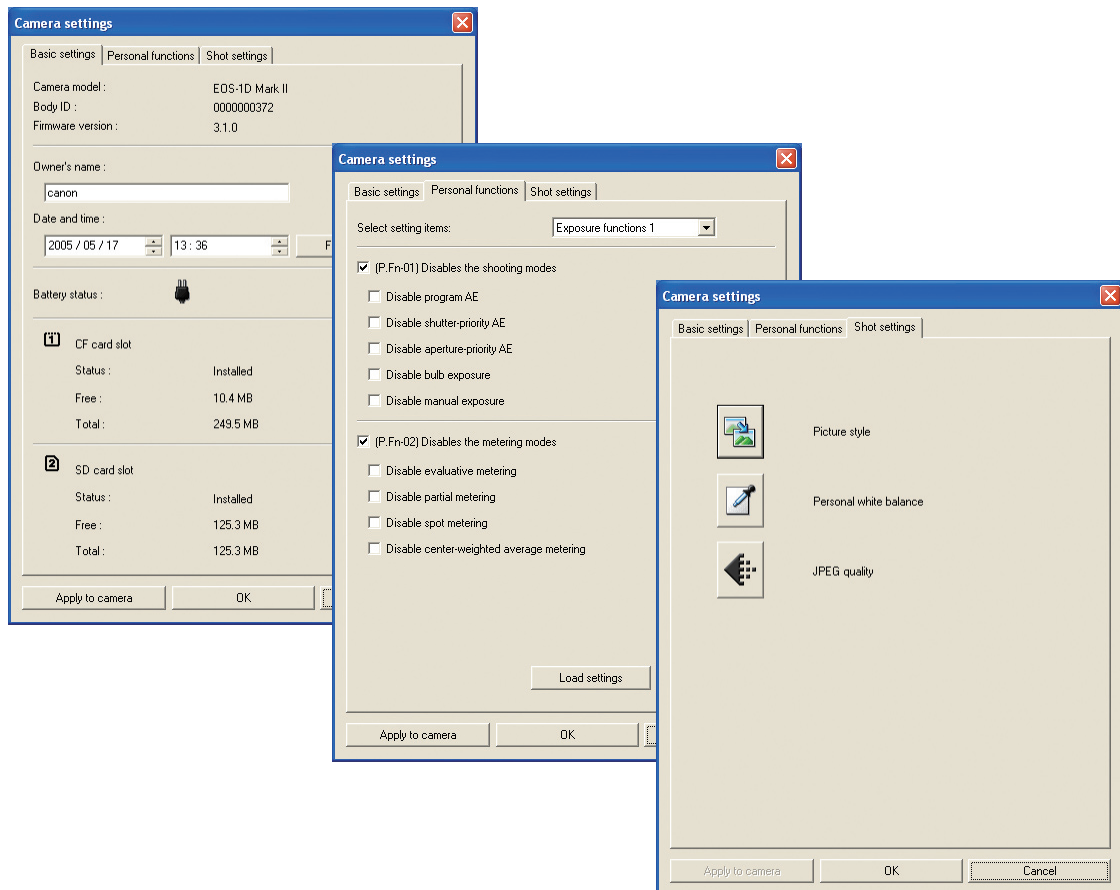


Fig. 010 EOS-1D MarkII N Camera setting windows

(2) Main functions in version 5.3 (functions added or modified in version 5.3 shown in blue)

- Automatically started/displayed when the camera is connected to the computer and allows the user to transfer images saved on a memory card in the camera to ZoomBrowser EX/ImageBrowser and specify the settings on the camera.
- Allows images saved on a memory card in the camera to be downloaded in a single operation and also allows images to be displayed as a list and downloaded selectively using the "Camera Browser window".
- Also supports image downloading from a card reader.
- **Camera setting function** with access to a range of camera settings.
- Viewing of images saved on CF cards in the camera.
- Links up with EOS Capture to enable remote shooting.

* Due to the camera specifications, DPOF settings cannot be specified and images cannot be recorded back onto a CF card in the camera on the EOS 5D, EOS-1D MarkII N, EOS DIGITAL REBEL XT/350D DIGITAL, EOS 20D or EOS-1D series cameras.

* DPOF settings can be specified and images can be recorded back onto a CF card in the camera on the EOS DIGITAL REBEL/300D DIGITAL, EOS 10D, EOS D60 and EOS D30.

3) PhotoRecord Ver 2.2 (Windows)

This software links up with ZoomBrowser EX to provide image layout and printing functions and is the same version as that bundled with the Canon digital cameras released in Spring 2005 (Fig. 011).

ZoomBrowser EX version 5.5 now features "Print 1 copy" and "Print index" functions so that ZoomBrowser EX only links with PhotoRecord for "Layout printing".

- When the user chooses an image in ZoomBrowser EX and selects "Layout printing", PhotoRecord is started/displayed and the image can then be printed on a printer connected to the computer.

- Uses a straightforward task button and wizards with the same design as the ZoomBrowser EX interface to cater to novice users.

- Provides simple procedures for printing and setup tasks such as image layout, image size adjustment, frame selection and text entry.

* Because ImageBrowser provides basically the same printing functions as PhotoRecord, PhotoRecord is not available for the Macintosh.

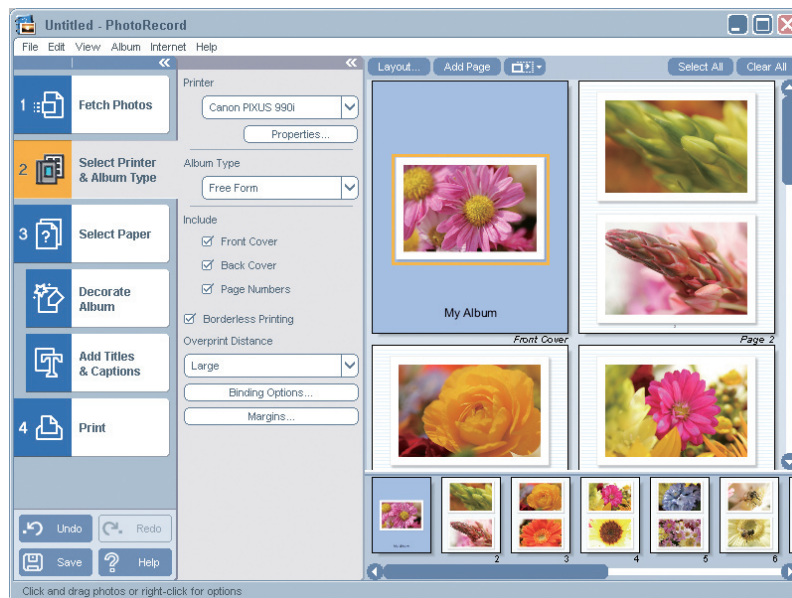


Fig. 011 PhotoRecord Ver 2.2 Main window

4) RAW Image Task Ver 2.2 (Windows / Macintosh)

(1) Overview and Main Changes

Built around version 2.0, this RAW image processing software incorporates the major function additions and modifications described below to expand its range of supported RAW images and better reflect the demands of the market (Fig. 012).

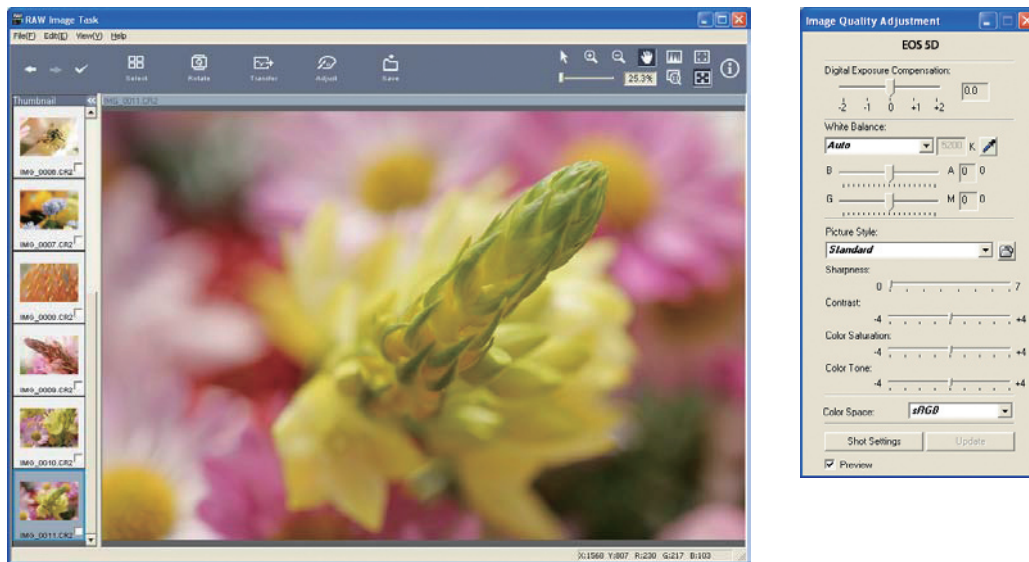


Fig. 012 RAW Image Task Ver 2.2 Main window

- Supported RAW images expanded to include EOS 5D and EOS-1D MarkII N RAW images.
- Addition of RAW image processing/setting functions that support the EOS 5D and EOS-1D MarkII N picture styles.
- Main window design modified (operation-step tab format removed, etc.) for improved operability (Fig. 012).
- Shooting information (focal length, shutter speed, aperture value, shooting mode, ISO speed) displayed on images (Fig. 013).
- Additional shortcut keys.

Except for these enhancements, the main functions are unchanged from version 2.0.

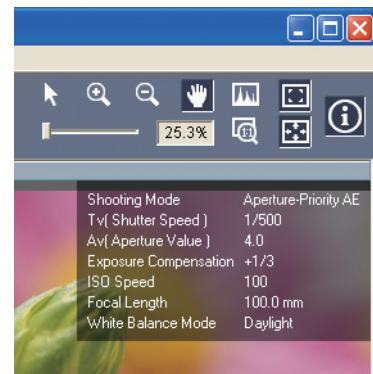


Fig. 013 Shooting information display

(2) Main functions in version 2.2 (functions added or modified in version 2.2 shown in blue)

- When the user selects a RAW image in ZoomBrowser EX and then selects image processing, RAW Image Task starts up and allows the RAW image to be processed and displayed. Selecting a RAW image allows the user to make image adjustments (using processing parameter settings) with no loss of image quality.
- Uses the high-quality image processing typical of genuine Canon software together with algorithms tailored to the camera to provide image processing with the same color tones as the camera itself.
- Settings changed to give the same processing parameters as on the camera.
- Support for all EOS DIGITAL RAW images from the EOS D30 onwards.
* EOS D6000, EOS D2000, EOS DCS1 and EOS DCS3 RAW images not supported.
- Functions for converting and saving images as TIFF and JPEG images and for adding ICC profiles to images.
- Support for color management systems.
- Support for 2 work color spaces (sRGB and Adobe RGB).

5) EOS Capture Ver 1.5 (Windows / Macintosh)

Built around version 1.3, this upgraded remote shooting software incorporates an expanded range of supported cameras (Fig. 014). Except for the addition of the EOS 5D and EOS-1D MarkII N to the list of supported cameras, the main functions are unchanged from version 1.3.

- Allows the camera to be controlled and camera settings to be specified from the computer and saves shot images directly to the computer.
- Also allows the user to take shots by pressing the shutter button on the camera.
- Compatible with the EOS 5D, EOS-1D MarkII N, EOS DIGITAL REBEL XT/350D DIGITAL, EOS 20D and EOS-1D series cameras.
 - * Because EOS capture does not support the PTP function, it cannot be used when the camera's communication setting is "Print/PTP", even with an EOS DIGITAL REBEL XT/350D DIGITAL or EOS 5D equipped with the PTP function supported by CameraWindow version 5.3. Consequently, the camera's communication setting should be set to "PC connection" when using EOS Capture.
 - * Because EOS Capture does not support the PTP function on the EOS 20D, communication with the camera is not possible using the "PTP" camera communication setting. Consequently, when using EOS Capture, "Normal" must be selected as the communication setting on the camera.



Fig. 014 EOS Capture Ver 1.5 Main window

6) PhotoStitch Ver 3.1 (Windows / Macintosh)

This software links up with ZoomBrowser EX/ImageBrowser to provide JPEG image merging functions and is the same version as that bundled with the Canon digital cameras released in Spring 2005 (Fig. 015).

- Uses a simple procedure to merge together multiple JPEG images to create composite images such as panorama shots.
- Uses a wizard-type interface tailored to novice users.

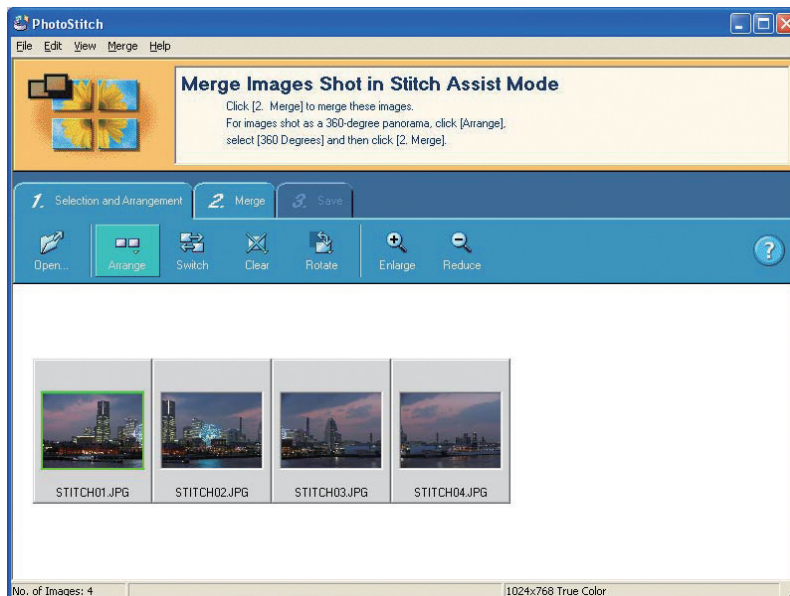


Fig. 015 PhotoStitch Ver 3.1 Main window

7) Digital Photo Professional Ver 2.0 (Windows / Macintosh)

(1) Overview and Main Changes

Built around version 1.6, this RAW image editing software incorporates the major function additions and modifications described below to expand its range of supported RAW images and better reflect the demands of the market (Fig. 016).

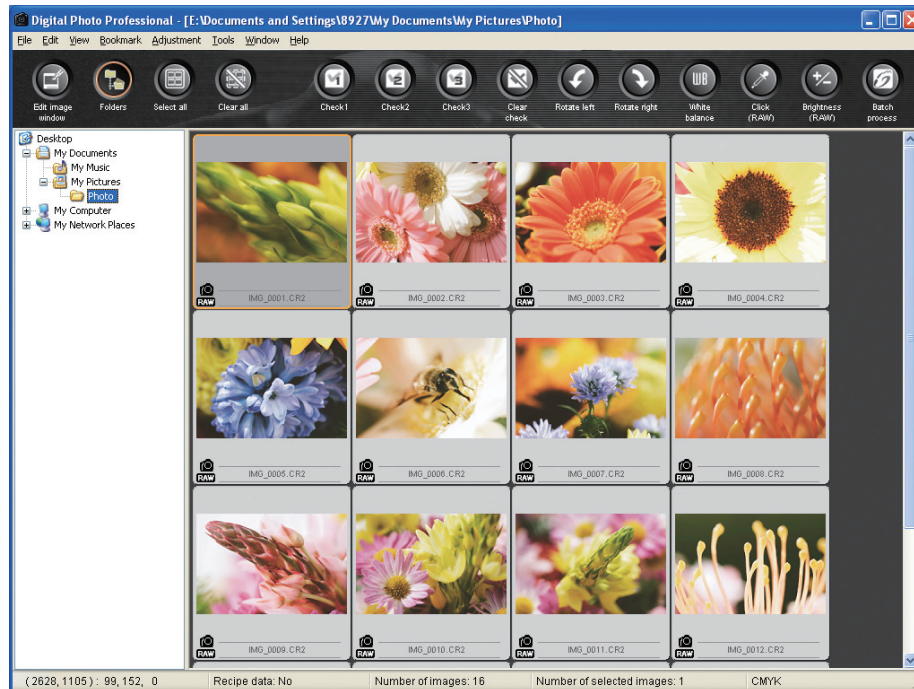


Fig. 016 Digital Photo Professional Ver 2.0 Main window

● Additional RAW image support

- Support has been added for RAW images shot using the EOS 5D, EOS-1D MarkII N and EOS D30. RAW images from all EOS DIGITAL cameras from the EOS D30 onwards are now supported.
* EOS D6000, EOS D2000, EOS DCS1 and EOS DCS3 RAW images not supported.

● Support for Picture Styles

- The "RAW image adjustment" tool palette now includes a Picture Styles function for the a new processing parameter available on the EOS 5D and EOS-1D MarkII N (Fig. 017). This function can be used with all of the RAW images supported by Digital Photo Professional and can even be used to process RAW images from older models not equipped with the Picture Styles function, using the latest algorithm to achieve superb image quality.
* Only RAW images shot on cameras equipped with the Picture Styles function (EOS 5D and EOS-1D MarkII N) are compatible with RAW Image Task.
* Because RAW images shot on a PowerShot Pro 1 cannot be edited in Digital Photo Professional, they also are incompatible with Picture Styles.

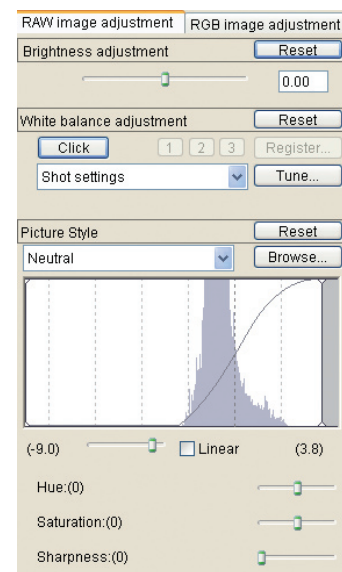


Fig. 017 RAW image adjustment tool palette

- Additional functions aimed at improving workflow efficiency for professionals
 - A Quick check window has been added that shows images reduced to half size (Fig. 018). This window, because it displays images more quickly than the Edit or Edit Image windows, which process and display images at full size (100%), provides a quick and convenient way to check the focus, etc.



Fig. 018 Quick check window

- Quick and easy selection using 3 types of image checkmarks.
- New folder creation function for creating folders in Digital Photo Professional.
- Sharpness function enhanced
 - A sharpness function has been added that allows images to be checked and adjusted on screen in realtime (Fig. 019/highlighted in red frame). The resulting adjustments can be saved together with other adjustments as recipe data. The Sharpness setting used during image conversion and saving that was provided up until version 1.6 has been discontinued.

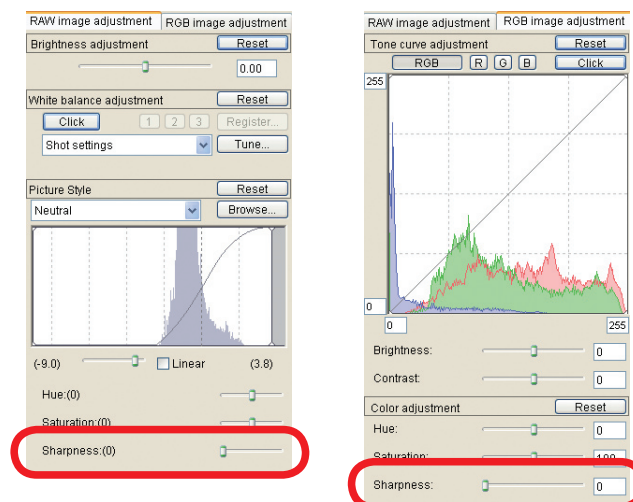


Fig. 019 Sharpness settings window (Raw image adjustment / RGB image adjustment)

●Enhanced image correction functions

- In addition to the Copy Stamp function provided in version 1.6, the Repair function that is a semi-automated image cleanup function has been added that uses the FARE technology developed for Canon's flatbed scanners (Fig. 020/highlighted in red frame). This is a fast and effective cleanup tool that allows the user to have sections of scanned images that contain stains or dust flecks instantly corrected simply by specifying the affected areas.

*The software identifies and corrects stains and dust by isolating pixels in the selected area of the image that are lower (darker) or higher (brighter) than the average brightness for that area.

* Depending on the color of the stains or dust, the user can select either the White stain correction button or the Black stain correction button.

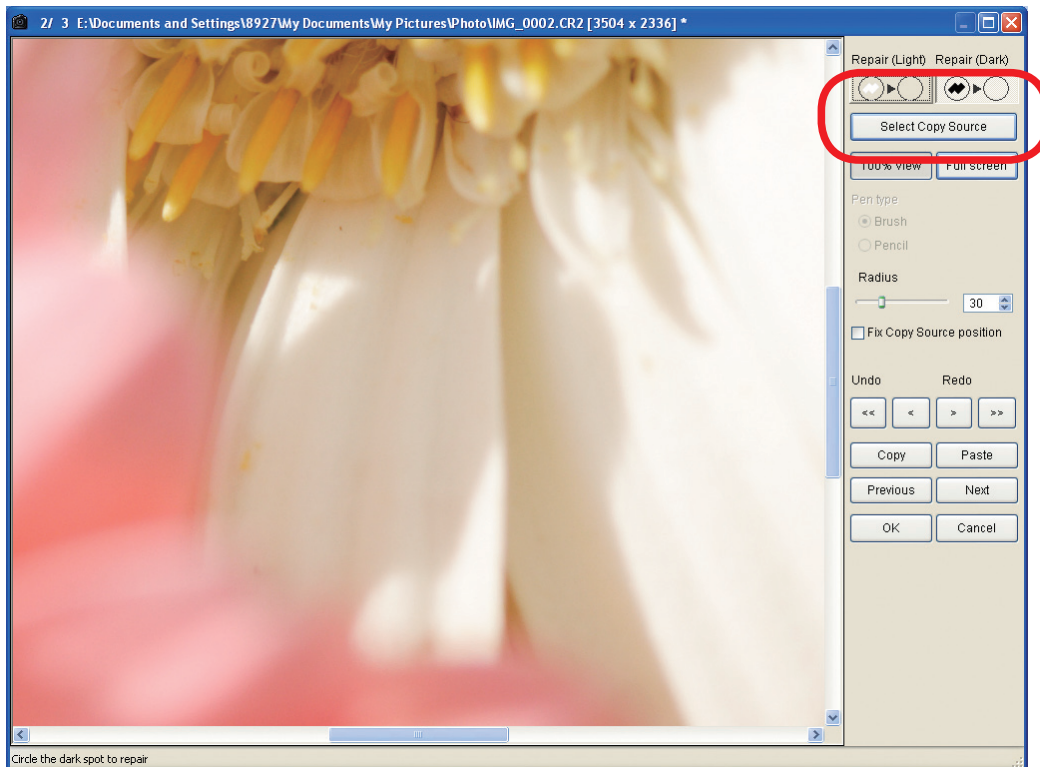


Fig. 020 Copy Stamp window

●Enhanced image transfer function

- By reviving the "Transfer to Photoshop" function provided in the "Tools" menu in version 1.1, we have restored the function for transferring single images to Photoshop. By combining this with the function available from version 1.5 onwards for transferring multiple images to other retouching software, image transfer options are now available for a range of situations.

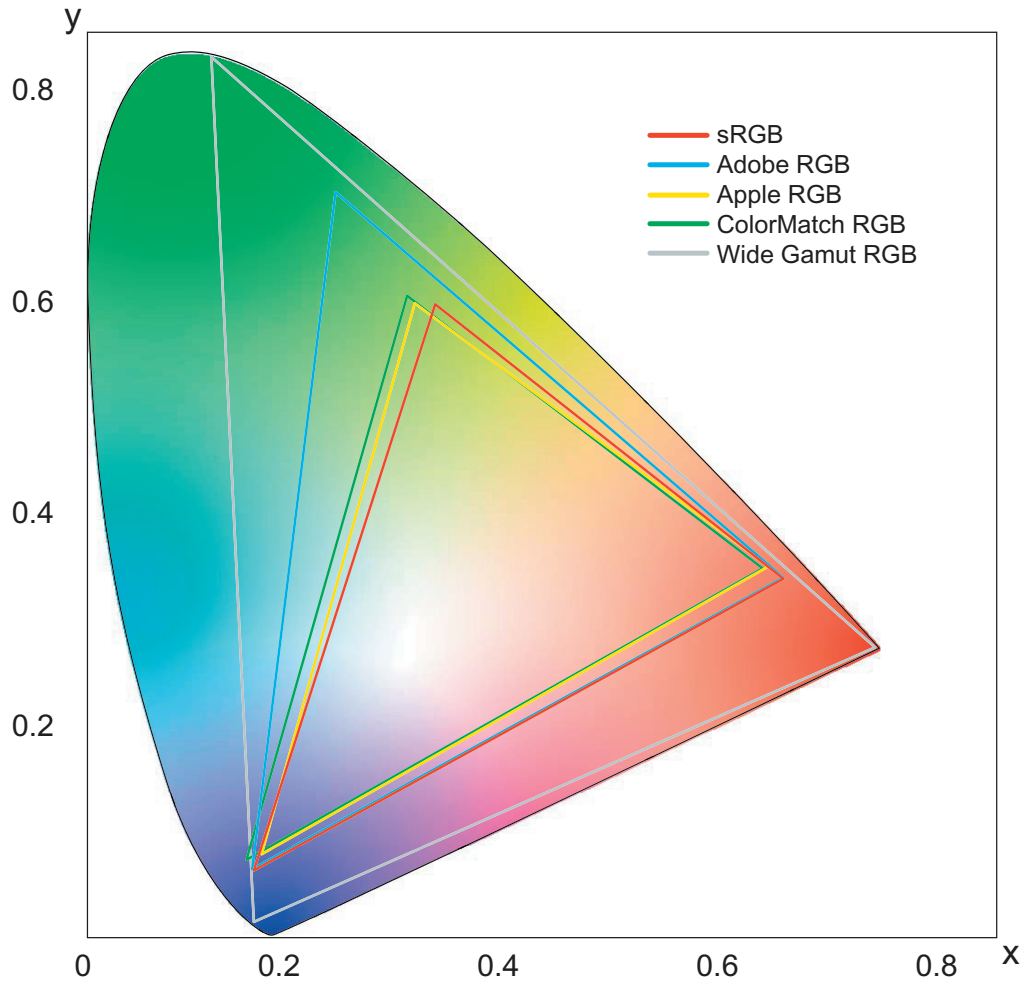
● Expanded color space support

- Support has been added for the Apple RGB and ColorMatch RGB color spaces.

Together with the previously supported color spaces (sRGB, Adobe RGB and Wide Gamut RGB), this brings the total number of supported color spaces to 5. (Fig. 021)

* Apple RGB: A color space that covers a slightly wider range of color tones than sRGB. This is the standard color space for Macintosh computers and is widely used by the Macintosh users that make up the majority of the DTP industry. (Fig. 021)

* ColorMatch RGB: A color space that covers a slightly wider range of color tones than sRGB. This color space provides optimal color matching with the PressView series monitors from Radius, which are widely used in the pre-press industry. (Fig. 021)



		gamma value	white point (color temperature)
—	sRGB	2.2	6500K (D65)
—	Adobe RGB	2.2	6500K (D65)
—	Apple RGB	1.8	6500K (D65)
—	ColorMatch RGB	1.8	5000K (D50)
—	Wide Gamut RGB	2.2	5000K (D50)

Fig. 021 Chromaticity diagram of supported color space

●Enhanced CMYK simulation function

- The color matching method up to version 1.6 was fixed at "Perceptual", but the "Colorimetric" option has been added to cater to a wider range of users. The range of supported color spaces has also been expanded from Adobe RGB only in version 1.6 and earlier to 5 color spaces in version 2.0 (sRGB, Adobe RGB, Wide Gamut RGB, Apple RGB and ColorMatch RGB) (Fig. 022).

* Perceptual: A matching method that converts to other colors based on the way the eye saw the original image, so that the viewer experiences no perceptual change. However, because colors are converted to other colors, colors in some images differ between the original image and the converted image.

* Colorimetric: A matching method that compares the white points in the converted image with the white points in the original image and then uses that difference as a reference for converting all the colors. This method allows more precise color conversion than perceptual color matching.

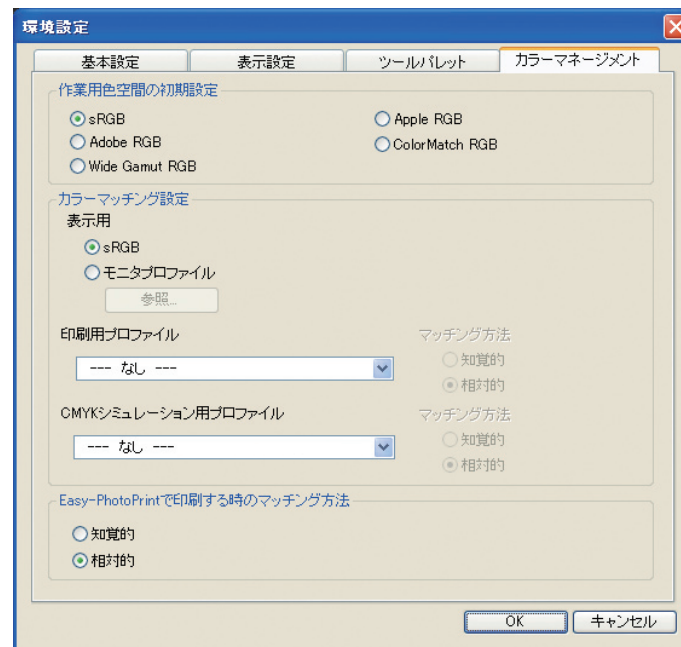


Fig. 022 Preferences window / Color Management tab

- In version 1.6, using the CMYK Simulation function required the user to specify the setting in the Preferences window. A shortcut key has now been added to make selecting this function quicker and easier.

Except for these enhancements, the main functions are unchanged from version 1.6.

(2) Main functions in version 2.0 (functions added or modified in version 2.0 shown in blue)

- RAW image editing software aimed squarely at users from high-end amateurs to professionals who primarily shoot RAW images.
- High-speed RAW image display and processing using Canon's own powerful algorithms.
- Easier operation and control with basic functions tailored to professional work flows.
- Image processing with excellent image quality from the latest algorithms used by Canon's own software.
- Support for all EOS DIGITAL RAW images.

* EOS D6000, EOS D2000, EOS DCS1 and EOS DCS3 RAW images not supported.

- A wide range of image display options tailored to different uses are available from the Main window, including thumbnail list display, independent Edit window that allow an image to be edited while being compared with other images, a Edit Image window that filters out images to make work more efficient, and the Quick check window that displays individual images quickly and is useful for checking the focus, etc.
- Before/After comparison display that allows the user to make adjustments while comparing the original and adjusted images in the same window.
- Image selection using 3 types of checkmarks.
- Realtime image adjustments.
 - RAW image editing
Brightness adjustment, white balance adjustment, Picture Styles, dynamic range adjustment
 - RAW image and RGB (JPEG and TIFF) image editing
Tone curve adjustment, color adjustment, trimming, image correction (Copy Stamp), sharpness adjustment, image rotation (left or right in 90° increments).
- Recipe data (the edit data from multiple functions) saving, loading and application to other images.
- Single image transfer to Photoshop and batch image transfer to any retouching software application.
- Single-copy printing of compatible images, including RAW images.
- Link-up between Easy-PhotoPrint and Canon BJ printers to give high-quality image printing using the Adobe RGB color space.
- Image conversion and saving as TIFF or JPEG images and the addition of ICC profiles.
- Batch conversion/save for multiple RAW images (batch processing).
- Batch file renaming.
- Support for remote shooting by linking with EOS Capture.
- Support for color management systems.
- Support for 5 color spaces (sRGB, Adobe RGB, Wide Gamut RGB, Apple RGB and ColorMatch RGB).
- CMYK simulation function.

8) WIA Driver (Windows XP, Me)

- A driver for Windows XP and Me that conforms to the Microsoft WIA (Windows Image Acquisition) standard.
- Functions as software for downloading JPEG images to your computer if you use the WIA Driver alone, or use it with a TWAIN-compatible software.
- Inclusion of the EOS 5D and EOS-1D MarkII N planned.

9) TWAIN Driver (Windows 2000, 98SE)

- A driver for Windows 2000 and 98SE that conforms to the TWAIN standard.
- Functions as software for downloading JPEG images to your computer if you use the TWAIN Driver with a TWAIN-compatible software.
- Drivers for the EOS 5D and EOS-1D MarkII N are planned to be included.

1.5 System Requirements

The system requirements for the software applications, unchanged from Solution Disk version 10, are shown below (Table 003, 004).

Table 003 System requirements for Windows

Software	ZoomBrowser EX, CameraWindow, PhotoRecord, RAW Image Task, EOS Capture, PhotoStitch, WIA Driver/TWAIN Driver		Digital Photo Professional
OS	Windows XP (Home Edition/Professional), Windows Me, Windows 2000, Windows 98SE		Windows XP、Windows 2000
Computer	PC with one of the above operating systems pre-installed and a USB connection as standard or an OHCI-compliant IEEE1394 connection. * Upgraded machines not supported.		PC with one of the above OS preinstalled * Upgraded machines not supported.
CPU	500 MHz Pentium or better		750 MHz Pentium III or better
RAM	Windows XP, 2000	Minimum 256 MB	Minimum 512 MB
	Windows Me, 98SE	Minimum 128 MB	
Interface	USB 1.1 to 2.0 Hi-Speed, IEEE 1394		
Hard disk space	ZoomBrowser EX, CameraWindow, PhotoRecord, RAW Image Task	250 MB or more	256 MB or more
	EOS Capture	300 MB or more	
	PhotoStitch	40 MB or more	
	WIA Driver/TWAIN Driver	50 MB or more	
Display	Screen resolution: 1024 by 768 pixels or more, Color quality: Medium (16 bit) or more		

Table 004 System requirements for Macintosh

Software	ImageBrowser, CameraWindow, RAW Image Task, EOS Capture, PhotoStitch		Digital Photo Professional
OS	Mac OS X 10.2 to 10.4		
Computer	Macintosh with one of the above operating systems installed and a USB or FireWire (IEEE1394) connection as standard.		Macintosh with one of the above OS installed
CPU	Power PC G3, G4, G5		G3, Minimum 400 MB
RAM	Minimum 256 MB		Minimum 512 MB
Interface	USB 1.1 to 2.0 Hi-Speed, IEEE1394		
Hard disk space	ImageBrowser, CameraWindow, RAW Image Task	250 MB or more	256 MB or more
	EOS Capture	550 MB or more	
	PhotoStitch	40 MB or more	
Display	Resolution :1024 × 768 or more, Colors : Thousands or more		

* EOS 5D, EOS DIGITAL REBEL XT/350D DIGITAL and EOS 20D support USB 2.0 Hi-Speed.

* The Macintosh UFS (UNIX File System) format is not supported.

1.6 Supported Languages

Each of the software applications is available in 7 languages (English, Japanese, French, German, Italian, Spanish and Chinese (simplified)). Three versions of the Solution Disk are provided according to the intended region. This is unchanged from Solution Disk version 10 (Table 005).

Table 005 Region-specific versions of Solution Disk and supported languages

Solution Disk region-specific version	Japanese	English	Chinese	French	Spanish	German	Italian
For Japan/China	Yes	Yes	Yes	No	No	No	No
For North/South America and Europe	No	Yes	No	Yes	Yes	No	No
For Europe	No	Yes	No	No	No	Yes	Yes