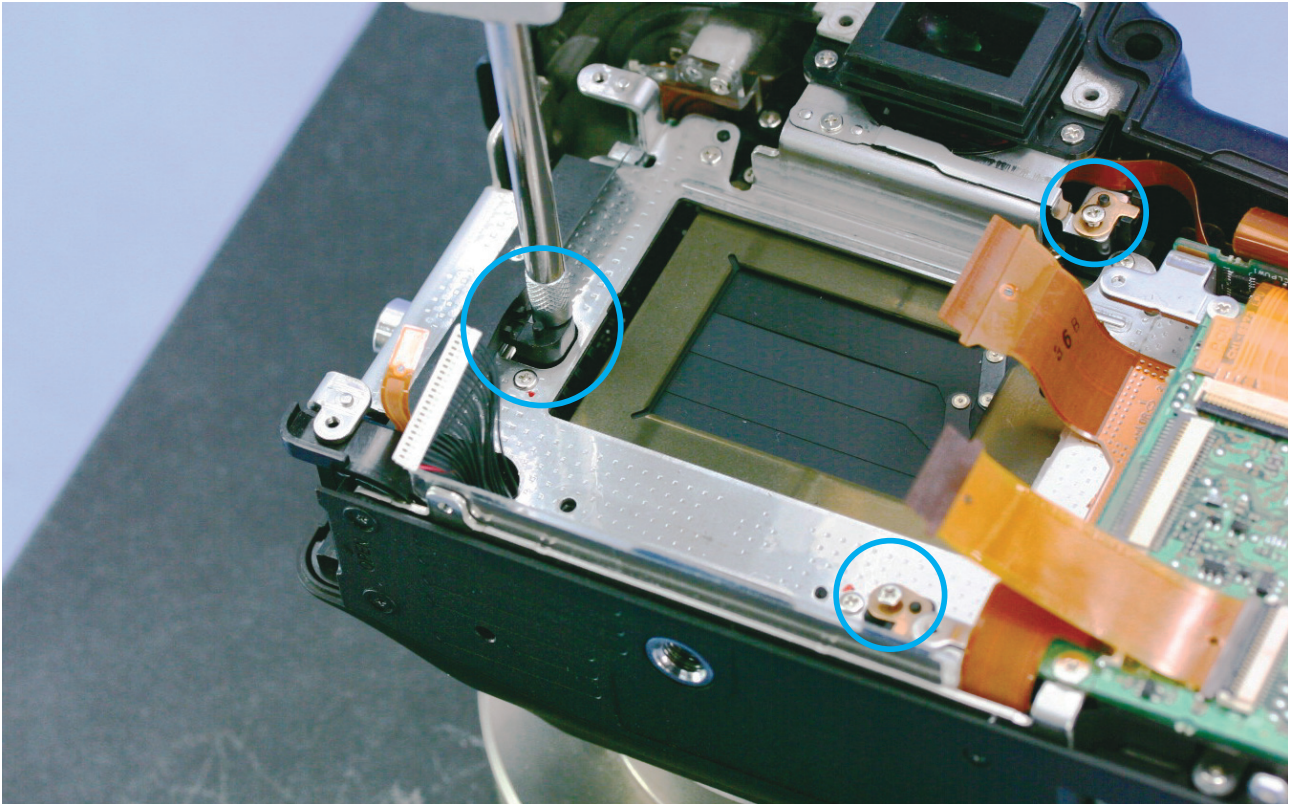
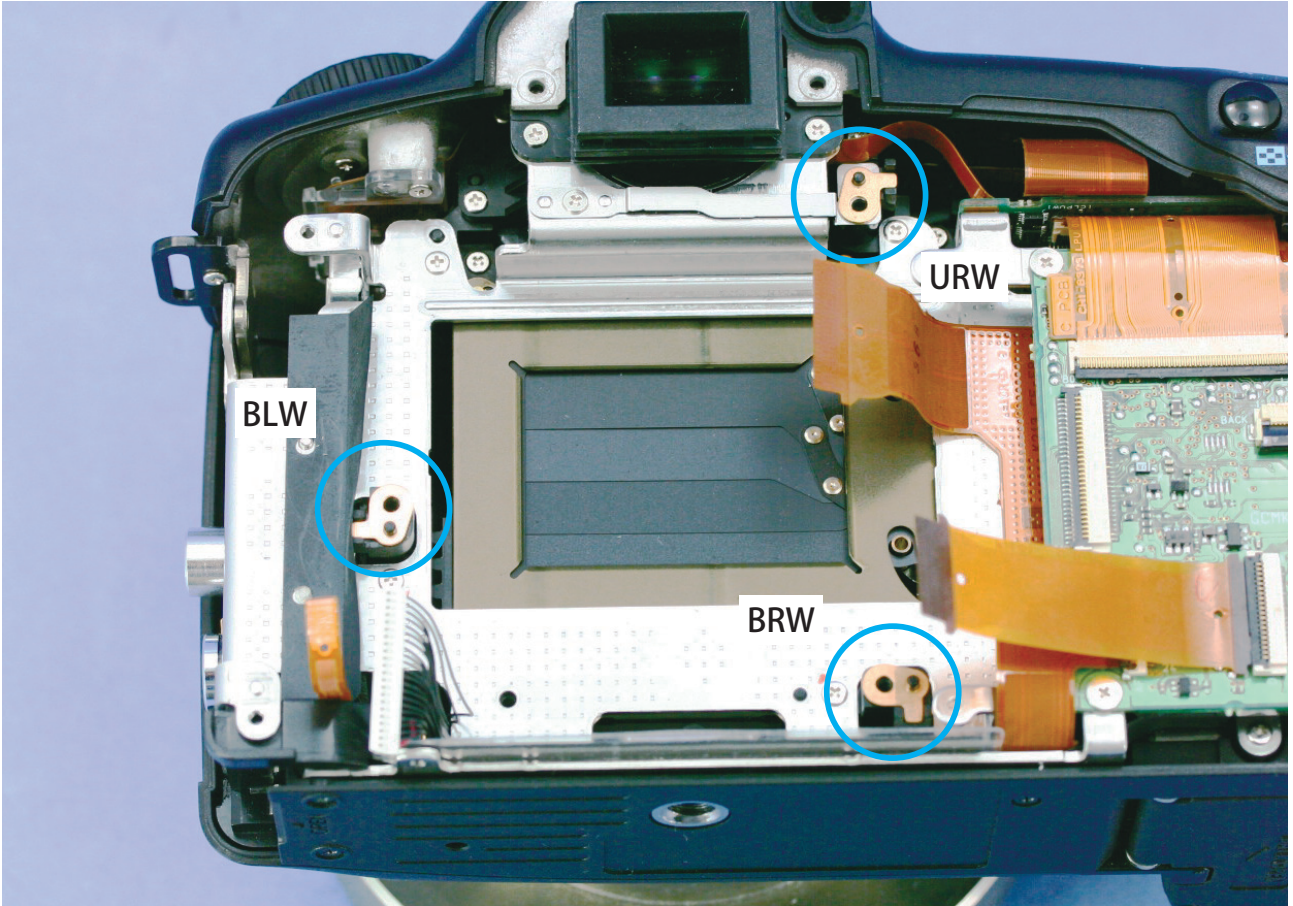


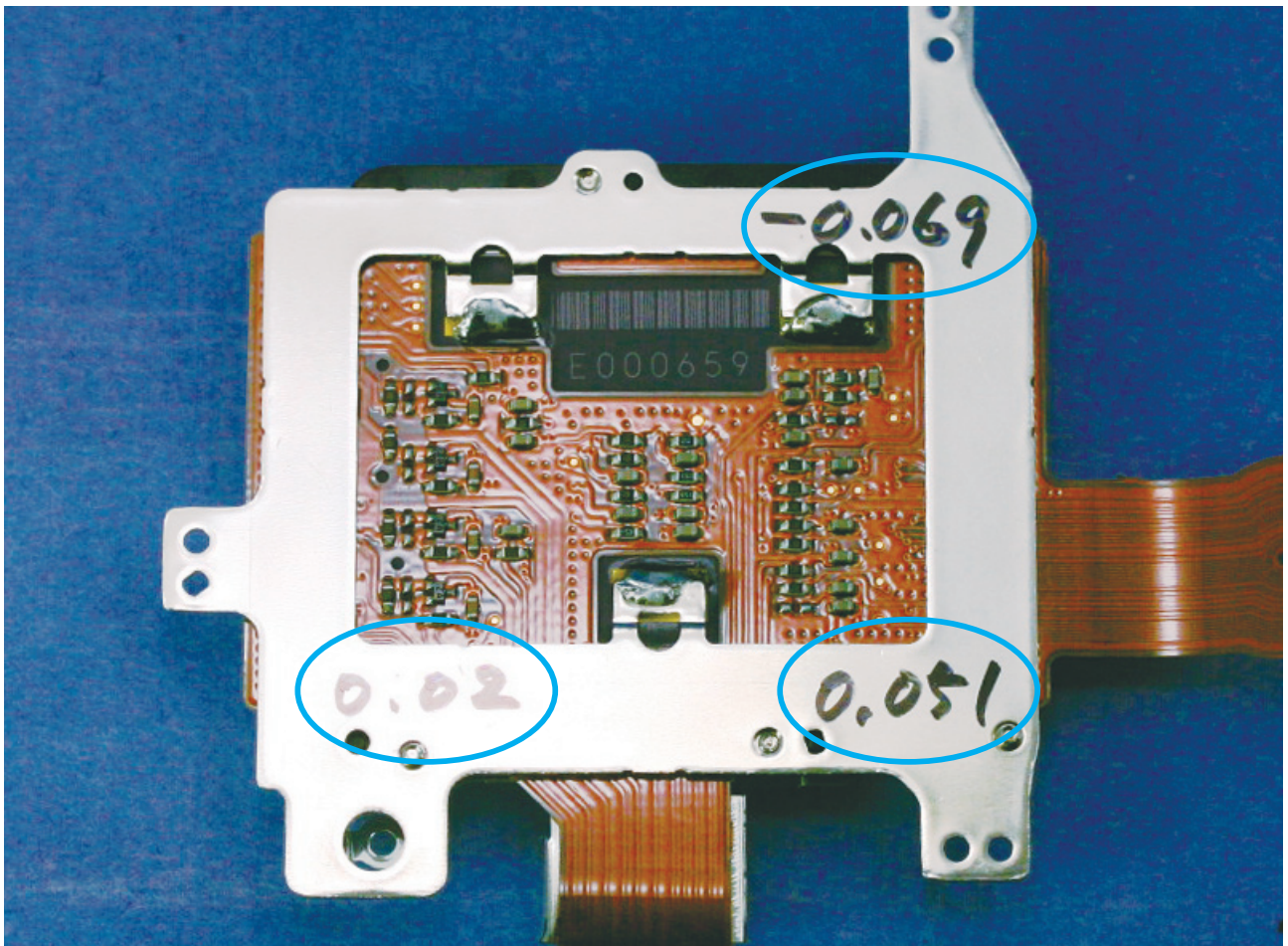
[← Back](#)



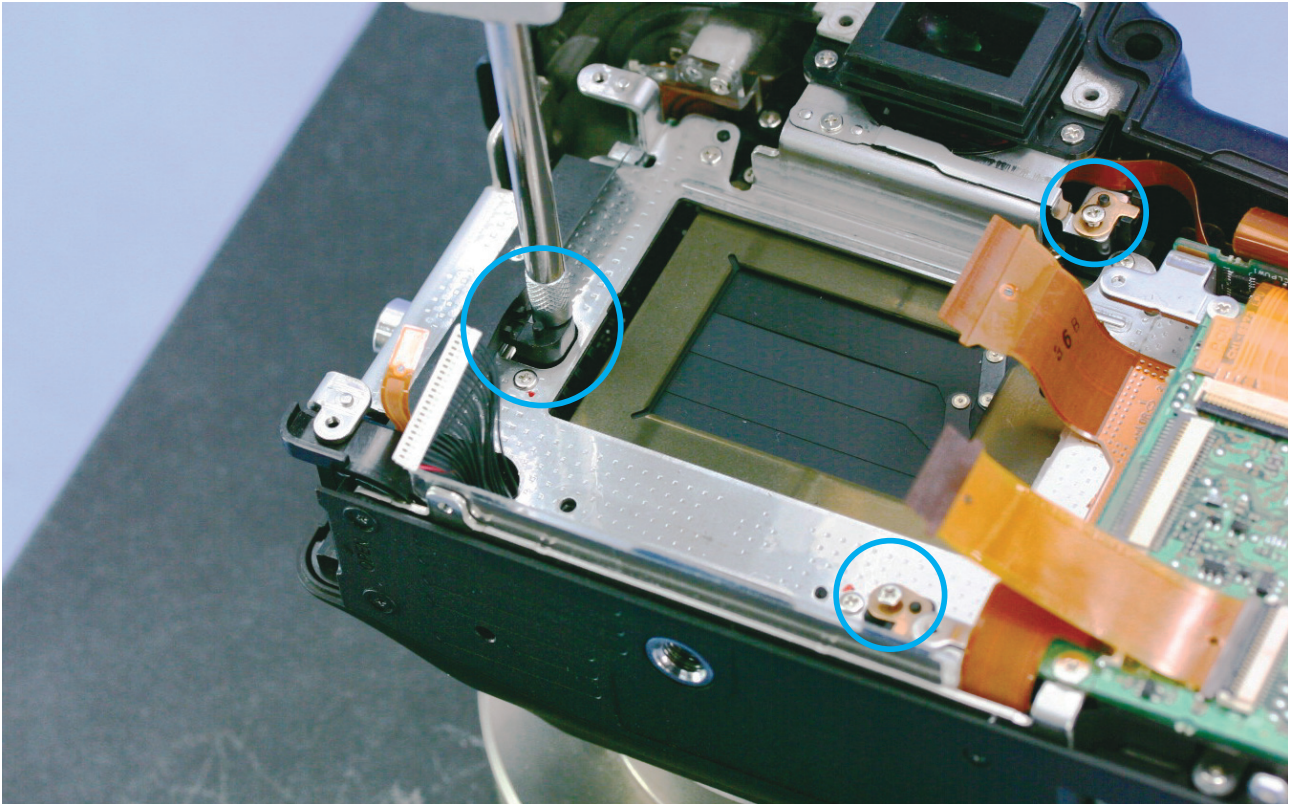
[← Back](#)



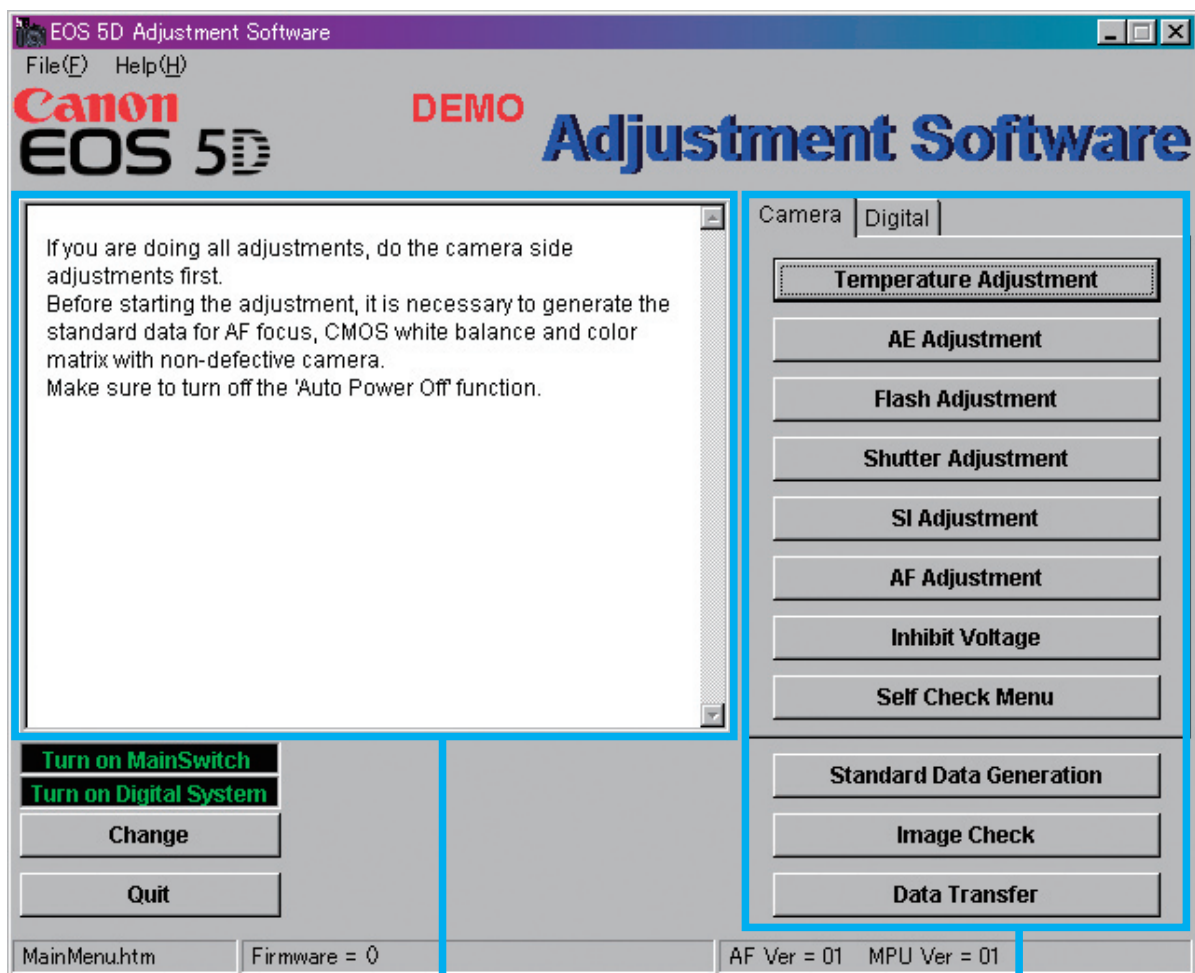
[← Back](#)



[← Back](#)



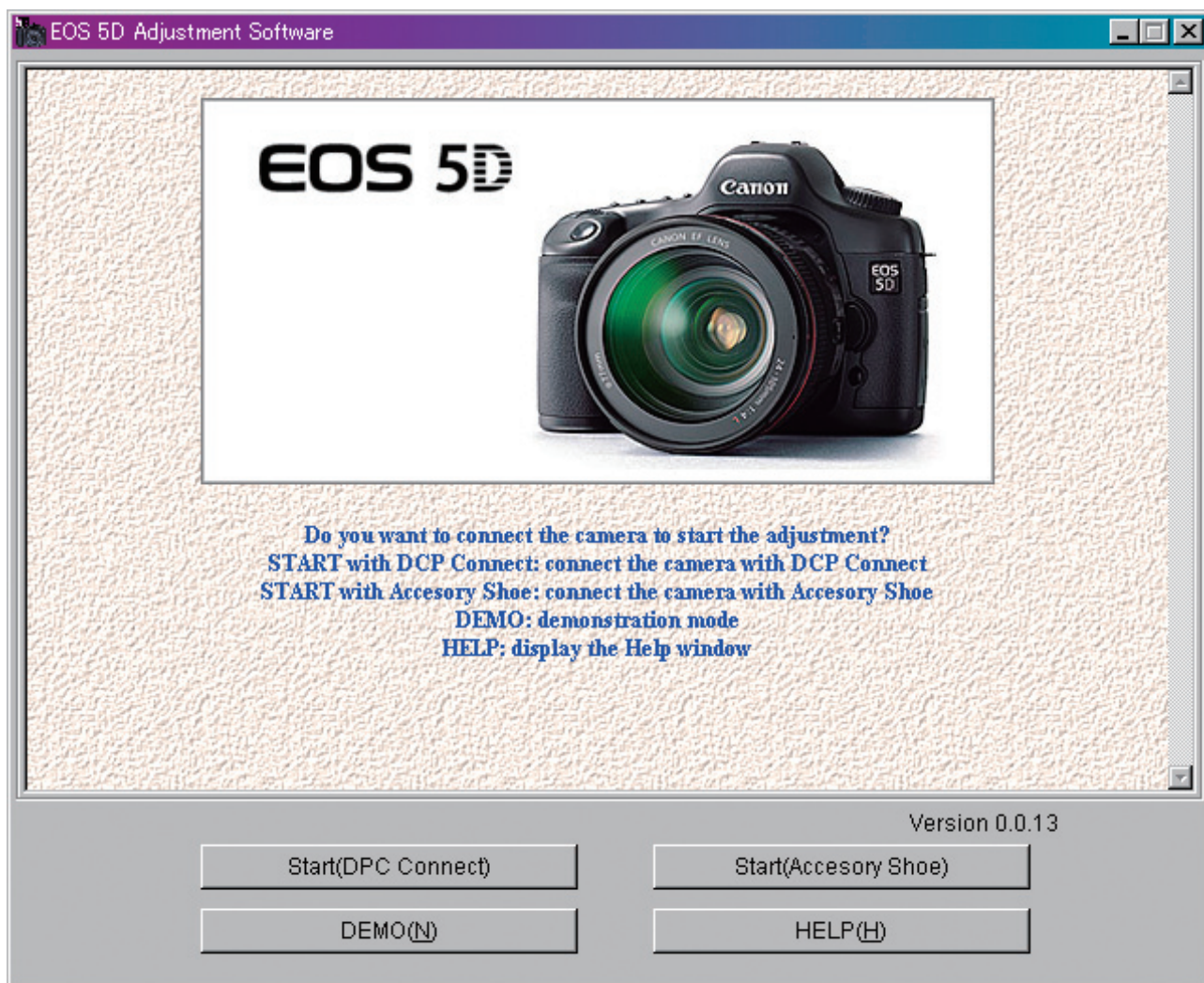
[← Back](#)



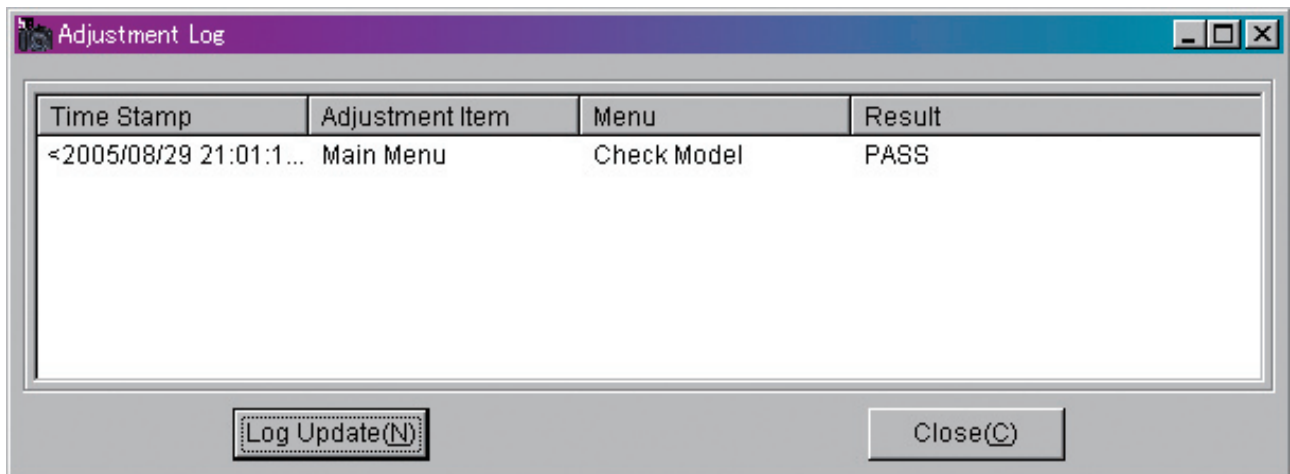
Message Area

Operation Area

← Back



[← Back](#)

A screenshot of a software window titled "Adjustment Log". The window has a purple title bar and standard Windows window controls (minimize, maximize, close). Inside, there is a table with four columns: "Time Stamp", "Adjustment Item", "Menu", and "Result". The first row of data shows a timestamp "<2005/08/29 21:01:1...", the item "Main Menu", the menu "Check Model", and the result "PASS". At the bottom of the window, there are two buttons: "Log Update(N)" and "Close(C)".

Time Stamp	Adjustment Item	Menu	Result
<2005/08/29 21:01:1...	Main Menu	Check Model	PASS

Log Update(N) Close(C)

 **Back**



EOS 5D HTML Help



Hide



Back

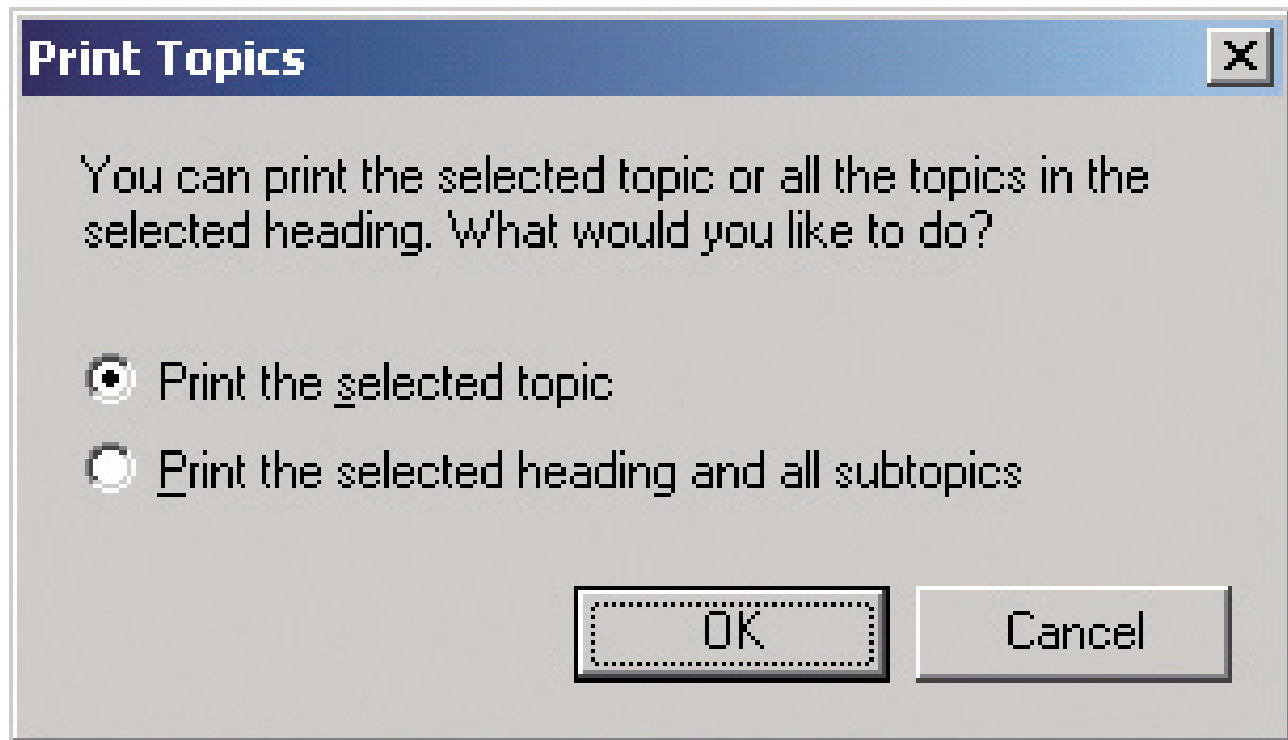


Print



Options

 **Back**



[!\[\]\(529949c2c3dadbaa4e538e8c643454bc_img.jpg\) **Back**](#)