

Canon

EOS
DIGITAL

Windows

Digital Photo Professional

READ CAREFULLY BEFORE USING!

CANON SOFTWARE LICENSE AGREEMENT

IMPORTANT - READ THIS AGREEMENT BEFORE USING THE SOFTWARE ON THE CD-ROM IN THIS BOX. BY USING THE SOFTWARE, YOU AGREE TO BE BOUND BY THE TERMS OF THIS AGREEMENT.

This is a license agreement (the [Agreement]) between you and Canon Inc. ([Canon]).

IF YOU DO NOT AGREE TO THE TERMS AND CONDITIONS OF THIS AGREEMENT, DO NOT USE THE SOFTWARE PROGRAM ON THE CD-ROM AND THE USER MANUAL IN THIS BOX (COLLECTIVELY, THE [SOFTWARE]) AND RETURN THE SOFTWARE WITHIN 30 DAYS FROM THE DATE OF PURCHASE TO YOUR POINT OF PURCHASE FOR A REFUND.

In consideration of the right to use the SOFTWARE, you agree to abide by the terms and conditions of this Agreement.

1. LICENSE: Canon grants you the non-exclusive right to use the SOFTWARE only on a single computer. You may physically transfer the SOFTWARE from one computer to another provided that the SOFTWARE is used on only one computer at a time. You shall not install or use the SOFTWARE on a network, multiple CPU, multiple site arrangement, or any other hardware configuration where the SOFTWARE is accessible to more than one CPU or to more than one user.

YOU SHALL NOT ASSIGN, SUBLICENSE, RENT, LEASE, LOAN, CONVEY OR OTHERWISE USE, TRANSFER, COPY, TRANSLATE, CONVERT TO ANOTHER PROGRAMMING LANGUAGE, ALTER, MODIFY, DECOMPILE OR DISASSEMBLE THE SOFTWARE, IN WHOLE OR IN PART, EXCEPT AS EXPRESSLY PROVIDED IN THIS AGREEMENT.

2. BACK-UP COPY: You may make one copy of the SOFTWARE solely for back-up purposes, or copy the SOFTWARE onto the permanent storage device (e.g. a hard disk) of your computer and retain the original for back-up purposes. Any other copying of the SOFTWARE is a violation of this Agreement. You must reproduce and include the copyright notice on the back-up copy.
3. SUPPORT AND UPDATES: Canon is not responsible for providing maintenance or support for use of the SOFTWARE. No updates, fixes or support will be made available for the SOFTWARE.
4. LIMITED WARRANTY AND LIMITATION OF LIABILITY: It is your responsibility to choose, maintain and match the hardware and software components of your computer system. Thus Canon does not guarantee uninterrupted service or correction of errors or that the functions or performance of the SOFTWARE will meet your requirements. THE SOFTWARE IS LICENSED ON AN [AS IS] BASIS AND WITHOUT WARRANTY OF ANY KIND. The CD-ROM storing the SOFTWARE is warranted only against defective material under normal use for a period of ninety (90) days after purchase from an authorized Canon dealer as evidenced by your sales receipt. Your sole remedy for a defective CD-ROM shall be replacement of the same without charge when returned by you at your expense to your point of purchase and proven to be defective upon inspection. The replacement CD-ROM will be warranted for the remainder of the original ninety (90) day warranty period of the defective CD-ROM. The limited warranty does not apply if the failure of the CD-ROM resulted from accident, abuse or misapplication of the SOFTWARE and shall not extend to anyone other than the original user of the SOFTWARE.

EXCEPT AS SPECIFICALLY SET FORTH IN THIS PARAGRAPH 4, CANON, CANON'S SUBSIDIARIES, DISTRIBUTORS AND DEALERS DISCLAIM ALL WARRANTIES, EXPRESS OR IMPLIED, INCLUDING ANY WARRANTY OF MERCHANTABILITY OR FITNESS FOR A PARTICULAR PURPOSE, WITH RESPECT TO THE SOFTWARE.

NEITHER CANON NOR ANY OF CANON'S SUBSIDIARIES, DISTRIBUTORS OR DEALERS IS LIABLE FOR ANY DAMAGES HOWSOEVER CAUSED, INCLUDING WITHOUT LIMITATION, DIRECT, CONSEQUENTIAL OR INCIDENTAL LOSS OR DAMAGE INCLUDING LOSS OF PROFITS, EXPENSE OR INCONVENIENCE HOWSOEVER CAUSED OR ARISING OUT OF THE SOFTWARE OR THE USE THEREOF.

NEITHER CANON, NOR ANY OF CANON'S SUBSIDIARIES, DISTRIBUTORS OR DEALERS SHALL HAVE ANY OBLIGATION TO INDEMNIFY YOU AGAINST ANY CLAIM OR SUIT BROUGHT BY A THIRD PARTY ALLEGING THAT THE SOFTWARE OR THE USE THEREOF INFRINGES ANY INTELLECTUAL PROPERTY OF SUCH THIRD PARTY.

5. **TERM:** This Agreement is effective upon your using the SOFTWARE and remains in effect until expiration of all copyright interests in the SOFTWARE unless earlier terminated. You may terminate this Agreement by destroying the SOFTWARE. This Agreement will also terminate without notice to you if you fail to comply with any of the terms of this Agreement and you must then promptly return the SOFTWARE. In addition, Canon may enforce its other legal rights.
6. **U.S. GOVERNMENT RESTRICTED RIGHTS NOTICE:** The SOFTWARE is provided with restricted rights. Use, duplication or disclosure is subject to restrictions as set forth in either subparagraph (c) (1) (ii) of the Rights in Technical Data and Computer software clause at DFARs 252.227-7013 or subparagraph (c) (1) and (2) of the Commercial Computer Software Restricted Rights Clause at FAR 52.227-19, as applicable.
7. **SEVERABILITY:** In the event that any provision of this Agreement is declared or found to be illegal by any court or tribunal of competent jurisdiction, such provision shall be null and void with respect to the jurisdiction of that court or tribunal and all the remaining provisions of this Agreement shall remain in full force and effect.
8. **CONTROLLING LAW:** The terms of this Agreement as it relates to purchases of the Software in the United States of America shall be governed and construed in all respects in accordance with the laws and regulations of the State of New York, without reference to choice of law principles. The terms of this Agreement as it relates to purchases of the Software in Canada shall be governed by the laws of the province of Ontario.
9. **OWNERSHIP:** All rights, including but not limited to copyrights and trade secret rights, to the SOFTWARE belong to Canon, its affiliated corporations and third party licensors. Your use of the SOFTWARE is subject to the United States, Canada and other applicable copyright and trademark laws and nothing in this Agreement constitutes a waiver of the rights of Canon, its affiliated corporations and third party licensors under such laws. Nothing contained in Paragraph 1 shall be construed to give Canon any ownership rights in any images, graphics or textual material that you save in connection with the Software.
10. **ACKNOWLEDGEMENT:** BY USING THE SOFTWARE, YOU ACKNOWLEDGE THAT YOU HAVE READ THIS AGREEMENT, UNDERSTOOD IT, AND AGREE TO BE BOUND BY ITS TERMS AND CONDITIONS. YOU ALSO AGREE THAT THIS AGREEMENT IS THE COMPLETE AND EXCLUSIVE STATEMENT OF AGREEMENT BETWEEN YOU AND CANON CONCERNING THE SUBJECT MATTER HEREOF AND SUPERSEDES ALL PROPOSALS OR PRIOR AGREEMENTS, VERBAL OR WRITTEN, AND ANY OTHER COMMUNICATIONS BETWEEN THE PARTIES RELATING TO THE SUBJECT MATTER HEREOF. NO AMENDMENT TO THIS AGREEMENT SHALL BE EFFECTIVE UNLESS SIGNED BY A DULY AUTHORIZED OFFICER OF CANON.

Contents

READ CAREFULLY BEFORE USING!	2
About This Manual	5
Main Features and Structure.....	6
Operation Flow	7
Supported Images.....	10

1 Displaying Thumbnail Images and Performing Basic Edits in the Main Window 1-1

Describes the functions of the main window, and how to display images and perform basic edits on them.

2 Performing Detailed Edits in the Edit Window 2-1

Describes the functions of the edit window, and how to display images and perform detailed edits on them.

3 Performing Detailed Edits in the Edit Image Window..... 3-1

Describes the functions of the edit image window, and how to display images and perform detailed edits on them.

4 Reference 4-1

Provides troubleshooting, the instructions on uninstalling Digital Photo Professional, and shortcut key list to allow you to use Digital Photo Professional easily.

Shortcut Key List 4-4

Index 4-8

Trademark Acknowledgments

- Canon and EOS are trademarks of Canon Inc.
- Adobe and Photoshop are registered trademarks or trademarks of Adobe Systems Incorporated in the United States and/or other countries.
- IBM is a registered trademark of International Business Machines Corporation.
- Microsoft and Windows are registered trademarks or trademarks of Microsoft Corporation in the United States and/or other countries.
- Other names and products not mentioned above may be registered trademarks or trademarks of their respective companies.

About This Manual

Thank you for purchasing this Canon product.


Precautions for using this product safely and icons to help you with procedures, etc. are described at the beginning of this Instruction Manual. Please be sure to read these first before proceeding to the information in the other chapters.


- It is prohibited to reproduce, in whole or part, the contents of this Instruction Manual without permission.
- Canon may change without notice the software specifications and contents of this Instruction Manual.
- The software screens and displays printed in this Instruction Manual may differ slightly from the actual software.
- The contents of this Instruction Manual has been reviewed thoroughly. However, if you should notice any errors or omissions, please contact Canon Service Center.
- Please note that irrespective of the above-mentioned, Canon does not take responsibility for the outcome of the operation of the software.

How to Read the Manual and the Conventions Used

- In this manual, Windows XP Professional/Home Edition is referred to as "Windows XP", and Windows 2000 Professional is referred to as "Windows 2000".
- Where explanations are common to all operating systems, the screens used in the examples are from Windows XP.
- In this document, square brackets [] are used to indicate items such as button names and icon names that appear on the computer screen.
- Numbers in parentheses in this document indicate reference pages.
- ▶ in this document indicates the sequence of operation as shown on the right.
Example: [View] menu ▶ [Sort] ▶ [File name]
- The explanations given below describe the type of content indicated by the respective icons.



: Marks information that should be read before use to prevent problems that would interfere with the functioning of software and computer.

: Marks additional information that you will find helpful.

Safety Precautions

Please read the safety precautions carefully before using this product. Ensure that you use the product correctly according to the procedures described in these instructions.

The following safety precautions are intended to instruct you in the safe and correct operation of the product and its accessories to prevent injuries or damage to yourself, other persons and property. Please read and ensure that you understand them before you proceed to the other sections of these instructions.

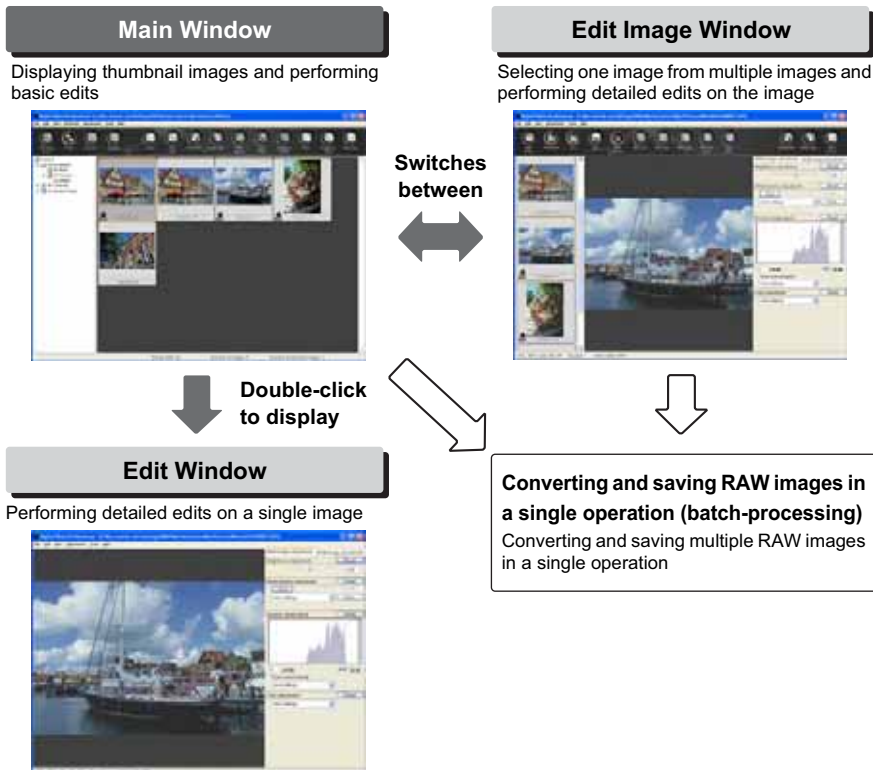
Warning

Do not play the supplied CD-ROM(s) in any CD-ROM Player that does not support data CD-ROMs. The extremely loud sound that may result from playing the CD-ROM(s) in an audio CD player (music player) could damage the speakers. It is also possible to suffer hearing losses from listening with headphones to the loud sounds of a data CD-ROM played on a music CD player.

Main Features and Structure

Digital Photo Professional is software dedicated for Canon digital camera images that has high-speed processing/editing functions, which meet the needs of professional or high-end amateur users who mainly shoot RAW images. This software allows you to perform the following edits on images.

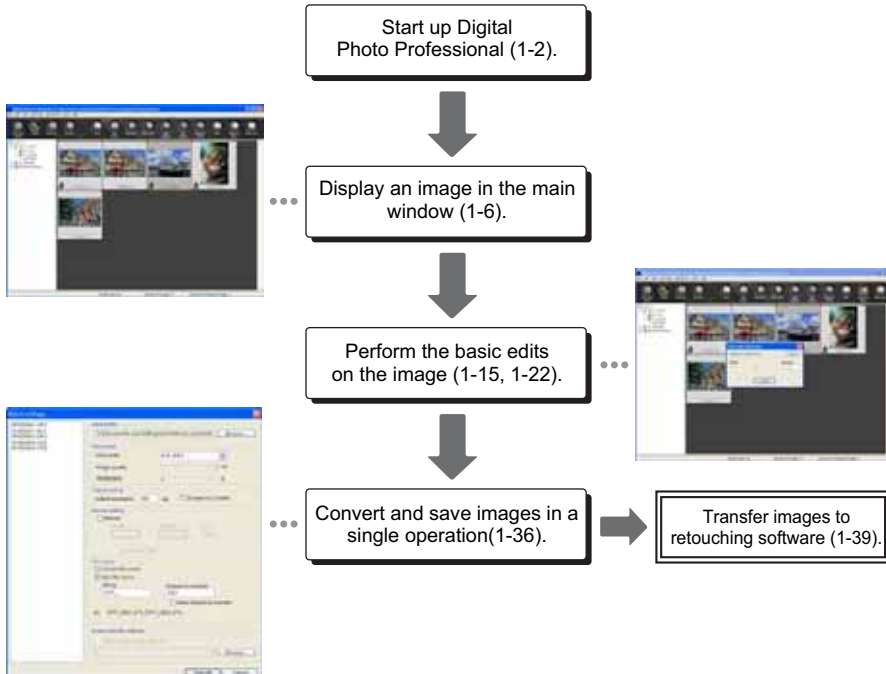
- High-speed displaying/processing RAW images with Canon's own high-performance algorithm.
- Switching among the main window (displayed as thumbnails), the edit window, and the edit image window to match the purposes of editing.
- Real-time adjustments of images for satisfying professional digital workflow.
RAW images: White balance, Brightness, Dynamic range, Color adjustment
RAW, RGB images (JPEG, TIFF images): Tone curve, Brightness, Color adjustment, Trimming and Image correction (copy stamp)
- Supports a Color Management System.
- Supports color space of sRGB, Adobe RGB, and Wide Gamut RGB.
- Effectively converting and saving multiple RAW images in a single operation (batch-processing).
- Includes a comparison mode that allows you to adjust an image while comparing an edited image with the original in the same window.
- Editing multiple images while comparing each of them.
- Saving and applying recipe data (the edit data from multiple functions).
- Digital Photo Professional consists of the following windows, each of which is opened from the main window that appears when you start up Digital Photo Professional.



Operation Flow

This section describes typical methods of operating Digital Photo Professional.

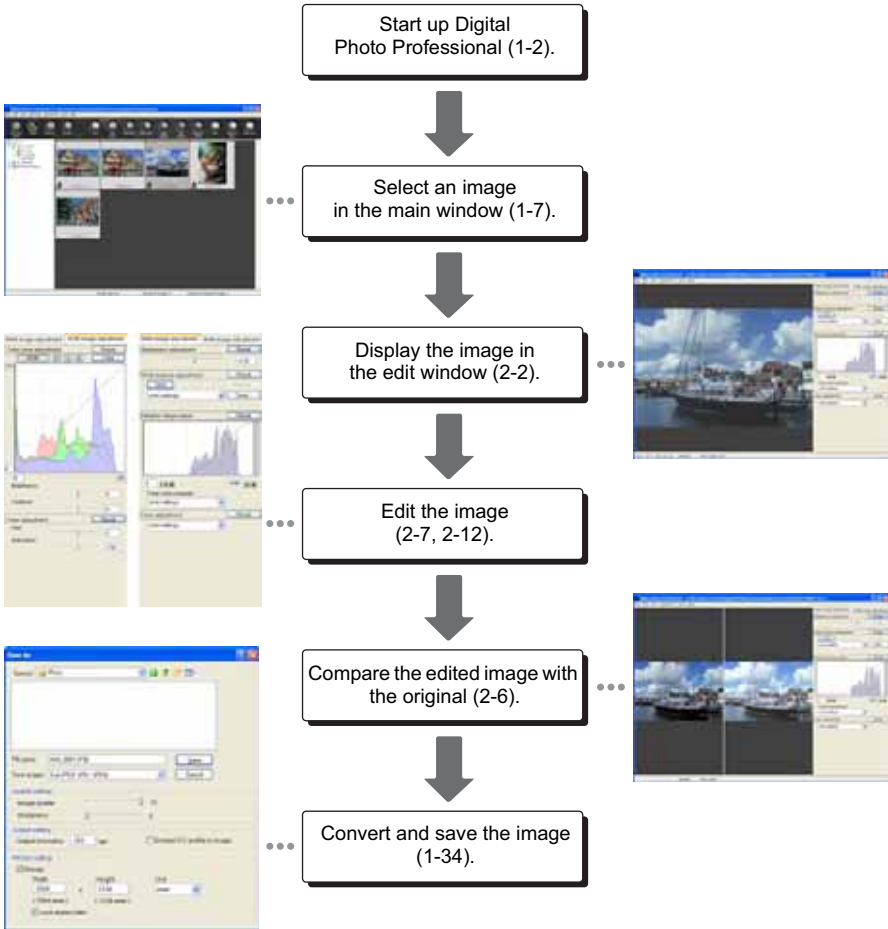
Example 1: Displaying Thumbnail Images and Performing Basic Edits in the Main Window



- The main window allows you to perform the following edits on images:

	RAW images	JPEG/TIFF images
White balance	○	—
Click white balance function (RAW)	○	—
Brightness (RAW)	○	—
Click white balance function	○	○
Brightness	○	○
Trimming	○	○
Image correction (copy stamp)	○	○
Rename batch	○	○

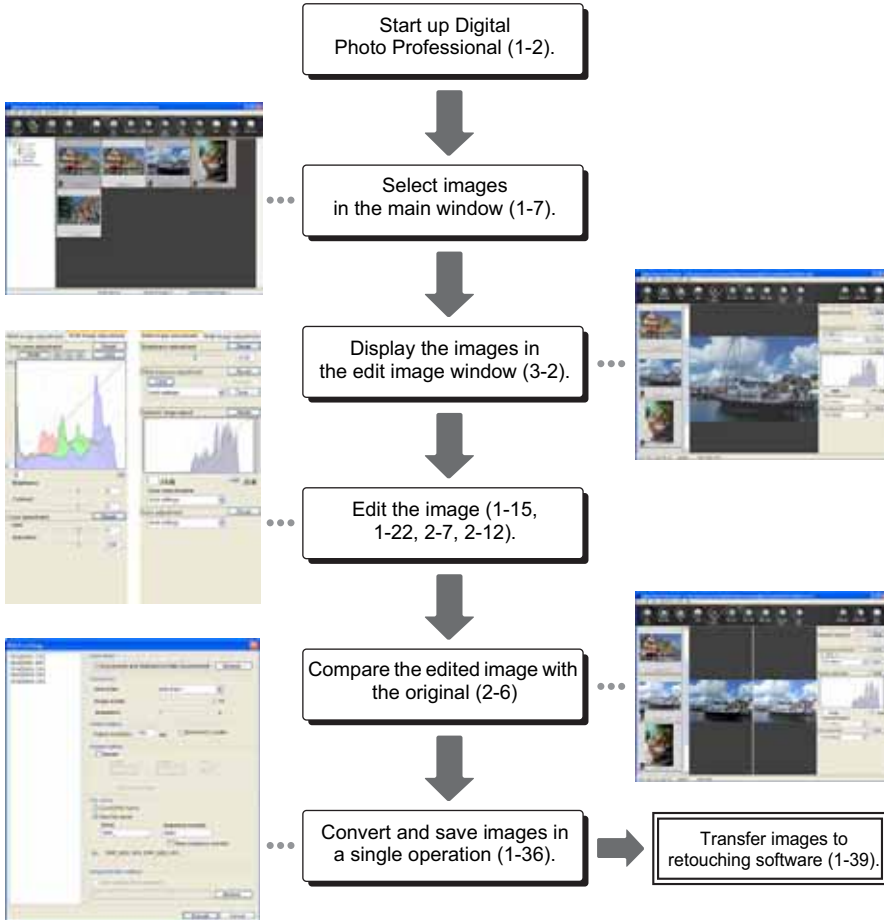
Example 2: Performing Detailed Edits on a Single Image in the Edit Window



● The edit window allows you to perform the following edits on images:

	RAW images	JPEG/TIFF images
Brightness (RAW)	○	—
White balance	○	—
Dynamic range	○	—
Color (RAW)	○	—
Tone curve	○	○
Color	○	○
Trimming	○	○
Image correction (copy stamp)	○	○

Example 3: Selecting One Image from Multiple Images and Performing Detailed Edits on the Image in the Edit Image Window



● The edit image window allows you to perform the following edits on images:

	RAW images	JPEG/TIFF images
Brightness (RAW)	○	—
White balance	○	—
Dynamic range	○	—
Color (RAW)	○	—
Tone curve	○	○
Color	○	○
Trimming	○	○
Image correction (copy stamp)	○	○

Supported Images

Image Type	Extension
RAW images shot on an EOS-1Ds Mark II, EOS-1D Mark II, EOS 20D or EOS DIGITAL REBEL XT/350D DIGITAL camera	.CR2
RAW images shot on an EOS-1Ds or EOS-1D camera	.TIF
RAW images shot on an EOS 10D, EOS D60, EOS DIGITAL REBEL/300D DIGITAL or PowerShot Pro1* camera	.CRW
Exif 2.2 or 2.21-compatible JPEG or JFIF images	.JPG, .JPEG
Exif-compatible TIFF images	.TIF, .TIFF

* You cannot edit with the Digital Photo Professional RAW image editing function.

Displaying Thumbnail Images and Performing Basic Edits in the Main Window



This chapter describes the functions of the main window, and how to display images and perform basic edits on them.

Starting up Digital Photo Professional ...	1-2	Adjusting the Brightness	1-28
Displaying Images	1-6	Specifying Color Space	1-29
Selecting Images	1-7	Using Edits (Recipe Data)	1-30
Selecting All Images	1-7	Saving the Recipes	1-30
Selecting Images According to		Loading and Pasting Recipes	1-30
Conditions	1-7	Copying Recipes and Applying to Other	
Handling the Folders	1-8	Images	1-31
Registering Frequent Use Folders with		Reverting Edited Images to Their	
the Menu	1-8	Original Condition	1-32
Organizing Frequent Use Folders	1-9	Reverting to Last Saved Settings ..	1-32
Deleting Images	1-10	Reverting to Shot Settings	1-32
Selecting the Image Display Mode ...	1-11	Saving Edited Images	1-33
Selecting the Thumbnail Size	1-11	Saving by Overwriting	1-33
Image with Information Display ...	1-11	Saving and Renaming	1-33
Displaying the Edit Window	1-12	Saving a Thumbnail of the Image	1-33
Displaying the Edit Image Window ..	1-12	Converting and Saving RAW Images	
Displaying Image Information	1-13	while Renaming Them	1-34
Sorting Images	1-13	Converting and Saving Images in a Single	
Hiding the Tree View Area	1-14	Operation (Batch-processing)	1-36
Hiding the Toolbar	1-14	Changing File Names in a Single	
Editing Images	1-15	Operation	1-38
Rotating Images	1-15	Transferring Images to Retouching	
Click White Balance Function	1-16	Software	1-39
Adjusting the Brightness	1-17	Printing Images	1-40
Trimming an Image	1-18	Printing with Easy-PhotoPrint	1-40
Correcting an Image	1-20	Displaying Images in EOS Capture ...	1-41
Editing RAW Images	1-22	Specifying the Preferences	1-42
Adjusting the White Balance	1-23		

Starting up Digital Photo Professional

Click the [Start] button ▶ select [All Programs] ([Programs] in Windows 2000) ▶ [Canon Utilities] ▶ [Digital Photo Professional x.x] ▶ [Digital Photo Professional].

- Alternatively, you can start up Digital Photo Professional by double-clicking the [Digital Photo Professional] icon on the desktop.

Main Window

Toolbar

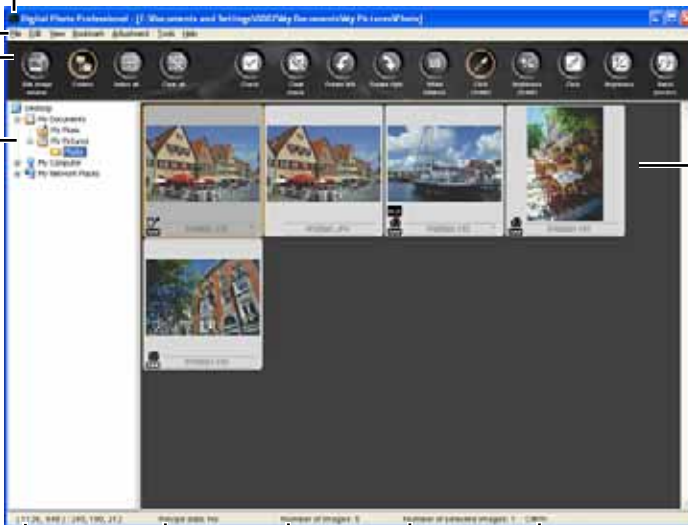
Menu bar

Displays the [File], [Edit], [View], [Bookmark], [Adjustment], [Tools], and [Help] menus.

Path display

Displays the path of the drive and folder that contain the currently displayed image.

Image display area



When you set CMYK simulation profile (1-45), [CMYK] is displayed.

Displays the number of the currently selected images.

Displays the total number of images.

Displays whether or not recipe data is attached to the selected image.

Displays the coordinates of the cursor position and the RGB values (8-bit conversion) of an image while operating the click white balance (1-16, 1-27).

Tree View Area (1-6, 1-8)

- To exit Digital Photo Professional, select [File] menu ▶ [Exit].

Menu Bar

File menu

File		
2-2	Open in Edit window...	Ctrl+O
1-33	Add recipe and save	Ctrl+S
1-33	Add recipe and save as...	Shift+Ctrl+S
1-33	Save Thumbnail	Shift+Ctrl+T
1-34	Convert and save...	Ctrl+D
1-36	Batch process...	Ctrl+B
1-40	Print...	Ctrl+P
1-40	Print with Easy-PhotoPrint	Ctrl+E
1-10	Delete	DEL
1-13	Info...	Ctrl+I
1-2	Exit	Alt+F4

Edit menu

Pastes images on the clipboard.

Copies images to the clipboard.

Moves images to the clipboard.

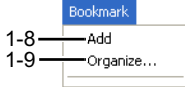
Edit		
	Cut	Ctrl+X
	Copy	Ctrl+C
	Paste	Ctrl+V
1-7	Select All	Ctrl+A
1-7	Clear All	Shift+Ctrl+A
1-7	Select RAW photos only	Alt+Ctrl+A
1-7	Select check marked photos only	Ctrl+Y
1-30	Save recipe in file...	
1-30	Read recipe from file...	
1-31	Copy recipe to clipboard	
	Paste recipe to selected photo	

1-30, 1-31

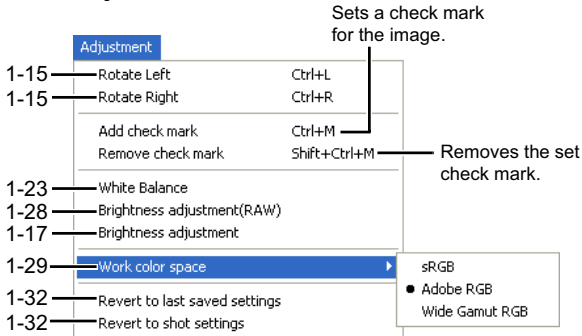
View menu

View		
3-2	Edit in Edit image window	Ctrl+Right Arrow
1-14	Folders	
1-14	Toolbar	
1-11	Large thumbnail	Ctrl+1
1-11	Middle thumbnail	Ctrl+2
1-11	Small thumbnail	Ctrl+3
1-11	Thumbnail with information	Ctrl+4
1-13	Sort	<ul style="list-style-type: none"> • File name RAW priority Check mark Shooting Date/Time

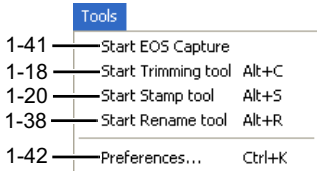
Bookmark menu



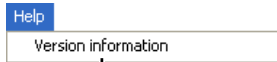
Adjustment menu



Tools menu



Help menu

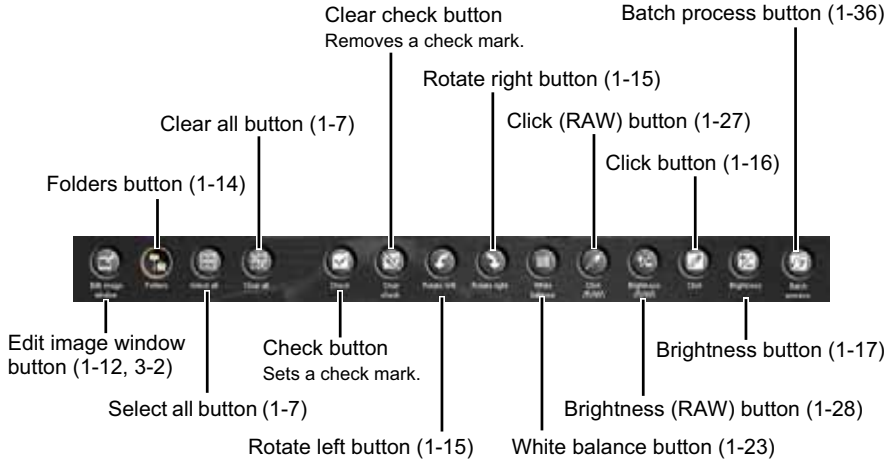


Displays the version information of Digital Photo Professional.



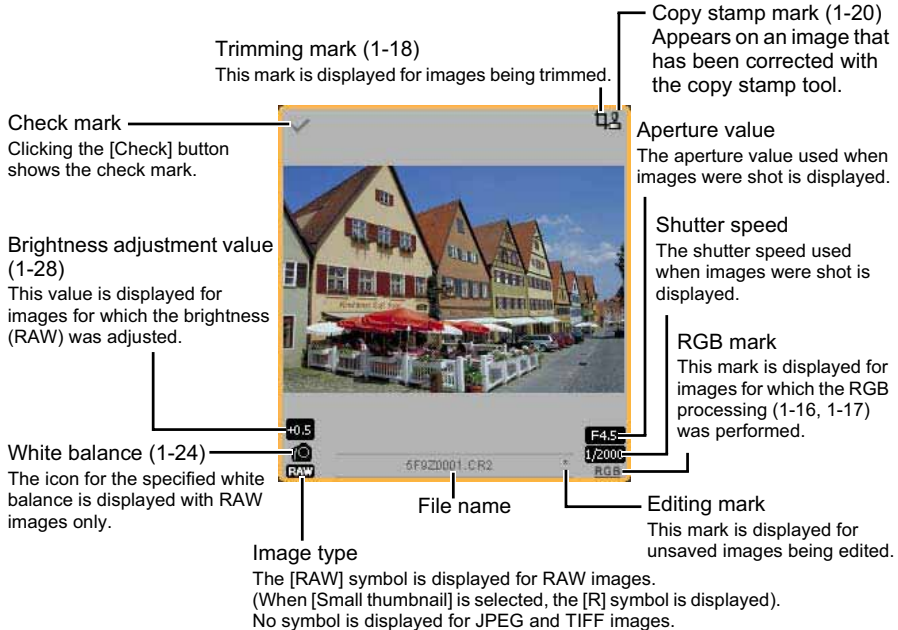
For the shortcut key list, see 4-4.

Toolbar



Information Displayed with Images

The following shows the information displayed when [Large thumbnail] is selected for the thumbnail size (1-11).



The [RAW] mark is not displayed for PowerShot Pro1 RAW images.

Displaying Images

You can display images saved in your computer on the main window.

Click the folder in which images are saved.



- You cannot display images saved on a memory card in the camera. You must save images to your computer using other software supplied with the camera or a third-party card reader.
- A JPEG image set to Adobe RGB and taken with the EOS 10D, EOS DIGITAL REBEL/300D DIGITAL or PowerShot Pro1 may display with the sRGB color space applied.
- A RAW image taken with the EOS 20D or EOS DIGITAL REBEL XT/350D DIGITAL in [B/W] setting will be displayed as a color image.

- See "Supported Images" (10) for image that you can display.
- Images that cannot be displayed appear as [X].
- Images that were shot with the camera held vertically with [Auto rotate] setting to <ON> are automatically displayed vertically.
- You can display images saved on a memory card using a third-party card reader.

Selecting Images

Click the target image.

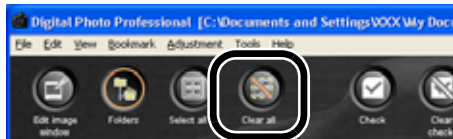
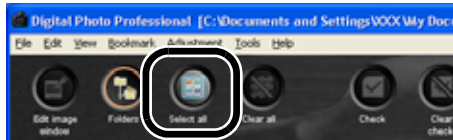
- The frame around the selected image is colored.
- To select multiple images, hold down the <Ctrl> key and click the images.
- To select sequential images, click the first image and then hold down the <Shift> key and click the last image.



Selecting All Images

Click the [Select all] button.

- Alternatively, you can select images by selecting the [Edit] menu ▶ [Select All].
- Clicking the [Clear all] button deselects all the images.
- Alternatively, you can deselect images by selecting the [Edit] menu ▶ [Clear All].



Selecting Images According to Conditions

Select [Edit] menu ▶ [Select RAW photos only].

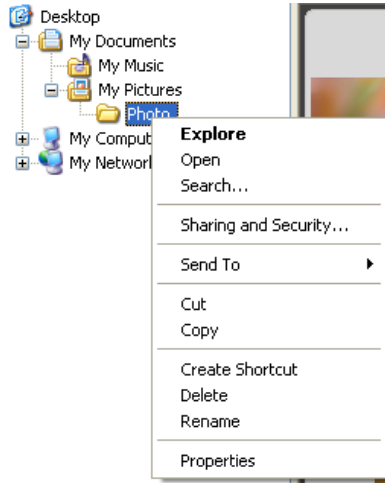
- If you select [Edit] menu ▶ [Select check marked photos only], you can select only the images for which the check mark (1-5) is specified.

Handling the Folders

You can handle the folder on the menu that appears by right-clicking the folder.

Right-click on the folder and select an option from the menu that appears.

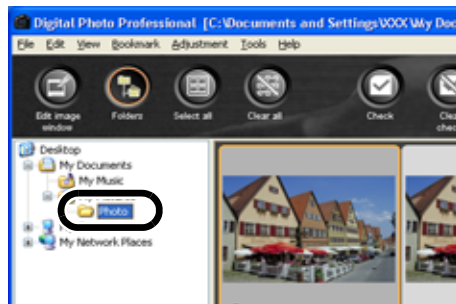
- You can drag and drop folders to move them from the Tree View Area to the other folders. You can also copy the folders by dragging and dropping them while holding down the <Ctrl> key.



Registering Frequent Use Folders with the Menu

You can register frequent use folders with the [Bookmark] menu.

1 Click a folder on the Tree View Area.



2 Select [Bookmark] menu ▶ [Add].

- The folder is registered with the [Bookmark] menu.
- The registered folder can be selected from the [Bookmark] menu.

Organizing Frequent Use Folders

You can change the name of the folder or delete the folder that was registered with the [Bookmark] menu.

1 Select [Bookmark] menu ▶ [Organize].

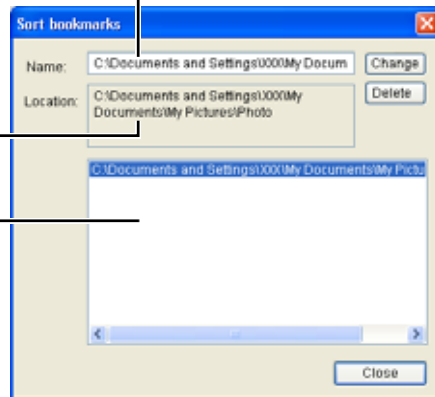
→ The [Sort bookmarks] dialog box appears.

2 Change the folder name or delete the folder.

The folder name that is selected in the bookmark folder display area is displayed.

The folder path that is selected in the bookmark folder display area is displayed.

Bookmark folder display area



- To change the folder name, select the folder in the bookmark folder display area, change the displayed folder name, and then click the [Change] button.
- To delete the folder, select the folder in the bookmark folder display area, then click the [Delete] button.

3 Click the [Close] button.

Deleting Images

You can move unnecessary images to the Recycle Bin on your computer and delete them.

1 Select images and then select [File] menu ▶ [Delete].

- The [Confirm File Delete] dialog box appears.
- If you select multiple images, the [Confirm Multiple File Delete] dialog box appears.

2 Click the [Yes] button.

- The images are moved to the Recycle Bin.



3 Select [Empty Recycle Bin] from the menu that appears by right-clicking [Recycle Bin] on the desktop.

- The images are deleted.



- Images that you deleted in step 3 cannot be restored. Check carefully before deleting images.
- When multiple images are selected, all the selected images will be deleted. Take particular care when you have just finished a task involving the selection of multiple images.



In addition to [CRW_YYYY.CRW] (RAW images) and [IMG_YYYY.JPG] (JPEG images), [CRW_YYYY.THM] (images for displaying camera indexes) is saved in the folder [xxxCANON] where images you have taken with the EOS 10D, EOS DIGITAL REBEL/300D DIGITAL, EOS D60 and PowerShot Pro1 are saved. With Digital Photo Professional, [CRW_YYYY.THM] images are not displayed and therefore you cannot move or delete them.

Move or delete [CRW_YYYY.THM] images on the desktop.

[xxx] of folder names and [YYYY] of image names represent a number.

Selecting the Image Display Mode

You can change the display size or method and sort images according to conditions.

Selecting the Thumbnail Size

The available image sizes are [Large thumbnail], [Middle thumbnail], and [Small thumbnail]. Various information (1-5) is displayed in the display frame.

Select [View] menu ▶ [Large thumbnail], [Middle thumbnail], or [Small thumbnail].

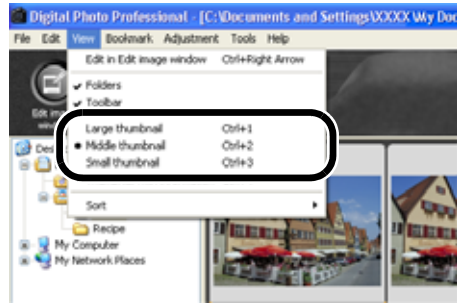


Image with Information Display

You can display the brightness histogram and the shooting information for images.

Select [View] menu ▶ [Thumbnail with information].



Displaying the Edit Window

You can enlarge the image and perform detailed edits.

Double-click an image.

- The edit window appears.
- See Chapter 2 “Performing Detailed Edits in the Edit Window” for the information on the edit window.



Displaying the Edit Image Window

You can select one image from multiple images and perform detailed edits.

Select multiple images and then click the [Edit image window] button.



- The main window switches to the edit image window.
- See Chapter 3 “Performing Detailed Edits in the Edit Image Window” for the information on the edit image window.



Displaying Image Information

You can check various information for images.

Select an image and then select [File] menu ▶ [Info].

- The image information appears.
- Clicking the [Close] button closes the dialog box.



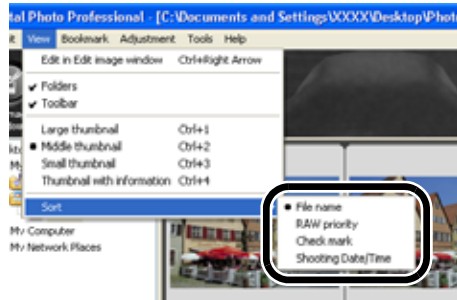
Image information may not appear for JPEG images set to Adobe RGB and taken with the EOS 10D, EOS DIGITAL REBEL/300D DIGITAL or PowerShot Pro1.

Sorting Images

You can sort images according to conditions.

Select [View] menu ▶ [Sort] ▶ [File name], [RAW priority], [Check mark], or [Shooting Date/Time].

- The images are sorted according to the selected condition as shown below.

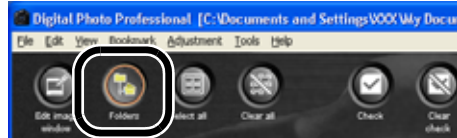


- [File name] : Sorted in alphanumeric order (0 to 9 → a to z).
- [RAW priority] : Displays in the following order:
RAW images (CR2 → CRW → TIF) → RGB images (JPG → TIF)
If multiple files have the same file extension, they are sorted in order of [File name].
- [Check mark] : Displays the image with a check mark (sorted in order of [File name]) → the image without a check mark (sorted in order of [File name]).
- [Shooting Date/Time] : Sorted by shooting date and time. If multiple images were taken on the same date and time, they are sorted in order of [File name].

Hiding the Tree View Area

Click the [Folders] button.

- Alternatively, you can hide the Tree View Area by selecting [View] menu ▶ [Folders].
- Performing the same operation again shows the Tree View Area.



Hiding the Toolbar

Select [View] menu ▶ [Toolbar].

- Performing the same operation again shows the toolbar.

Editing Images

You can perform various edits on the RAW, JPEG, and TIFF images that are supported by Digital Photo Professional.

1 Select an image (1-7).

2 Edit the image (1-15 to 1-21).

- You can apply edits to other images by copying and pasting the edit data to the other images (1-31).
- You can revert edited images to the last saved settings or shot settings (1-32).

3 Save the edited image (1-33).

Before exiting Digital Photo Professional, you must save the edited images (1-33).

- When multiple images are selected, the edits are applied to all the selected images.
- The editing data can be saved in a separate file (1-30).
- The edited images can be transferred to retouching software (1-39).

Rotating Images

You can rotate a selected image by 90-degree increments left or right.

Click the [Rotate left] or [Rotate right] button.

- Alternatively, you can rotate images by selecting [Adjustment] menu ▶ [Rotate Left] or [Rotate Right].



- Images that were shot with the camera held vertically with [Auto rotate] setting to <ON> are automatically displayed vertically.
- If a rotated image is displayed in another application, the image may not appear rotated.

Click White Balance Function

Makes white the standard for the part you selected and automatically adjusts the white balance.

1 Click the [Click] button.

→ When you move the cursor over the image, the cursor [↔] changes to [↔].



2 Click the part where is to be the standard.

→ The white balance is adjusted so that the point clicked appears white.

- If you click on another point over the image, the white balance is adjusted again.
- When you finish this operation, click the [Click] button or right-click.



- The coordinates of the cursor position and the RGB values (8-bit conversion) of an image are displayed in the lower-left of the main window (1-2).
- The image is adjusted based on the value of 1×1 pixels from the clicked point.
- You can also adjust the white balance by clicking an achromatic color (neutral gray) part of the image.

Adjusting the Brightness

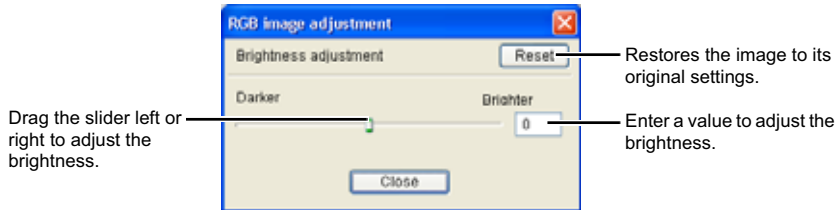
You can adjust the brightness of an image in the range of -100 to $+100$ in 1-stop increments.

1 Click the [Brightness] button.

- The [Brightness adjustment] dialog box appears.
- Alternatively, you can display this dialog box by selecting [Adjustment] menu ▶ [Brightness adjustment].



2 Adjust an image while viewing it.



3 Click the [Close] button.

Trimming an Image

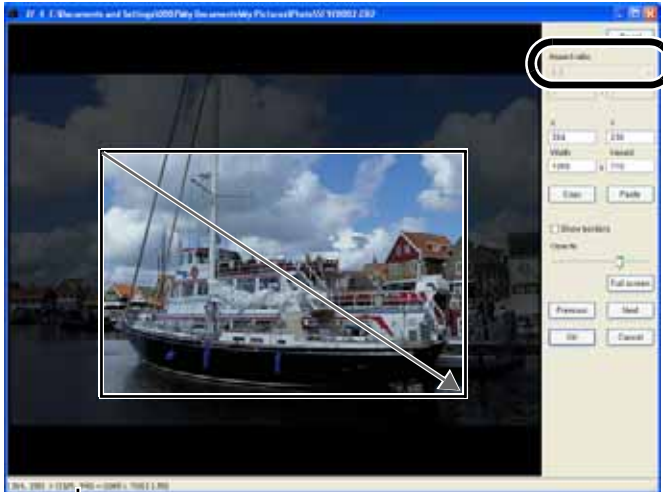
You can trim an image within your desired range.

1 Select the [Tools] menu ▶ [Start Trimming Tool].

→ The trimming window appears.

2 Trim the image.

- Select a ratio from the [Aspect ratio] list box, and drag the trimming range as shown in the diagram.



Displays the coordinate position of the cursor.
Where you have set the trimming range, the upper left and lower right XY coordinates, width, height and aspect ratio of the frame are displayed.

- If you move the cursor over the trimming range you have set, the [↔] changes to [↕]. Move the trimming range by dragging.
- If you move the cursor to the four corners of the trimming range you have set, the [↕] changes to [↔] or [↗]. The cursor changes to [↕] or [↔] when you move it over one of the four edges. Change the trimming range size by dragging.

Select the vertical/horizontal ratio of the trimming range.

Returns settings to the original settings.

Displays the upper left coordinates of the trimming range you have set. You can also set the coordinates by entering your desired numbers.

Displays the size of the trimming range you have set. You can also set the size by entering your desired numbers.

Copies the trimming range you have set.

Displays a border around the trimming range.

Displays a full screen of the trimming window. Press the <F11> key or the <Alt>+<Enter> keys on the keyboard to return to the normal window.

Displays the previous image.*

Applies the settings and closes the trimming window.

OK

Cancel

Displays the next image.*

Next

Previous

Full screen

Opacity

Show borders

Paste

Copy

Width: 1065 x Height: 710

X: 264 Y: 230

Aspect ratio: 3:2

Reset

Free
3:2
2:3
4:3
3:4
A Size Landscape
A Size Portrait
Letter Landscape
Letter Portrait
Custom

Displays the ratio selected from the [Aspect ratio] list box. You can also enter your own ratio when you select [Custom] from the [Aspect ratio] list box.

The trimming range copied from another image is reflected in the image displayed.*

Sets the level of opacity outside the trimming range.

*Functions when you have selected multiple images and the trimming windows are displayed.

3 Click the [OK] button.

- You can also set the [Aspect ratio] and switch between Full screen/Normal screen from the menu that appears by right-click on the image.
- You can [reset] (returns settings to the original settings) by pressing the <Esc> key on the keyboard.
- For the shortcut key list, see 4-6.

Correcting an Image

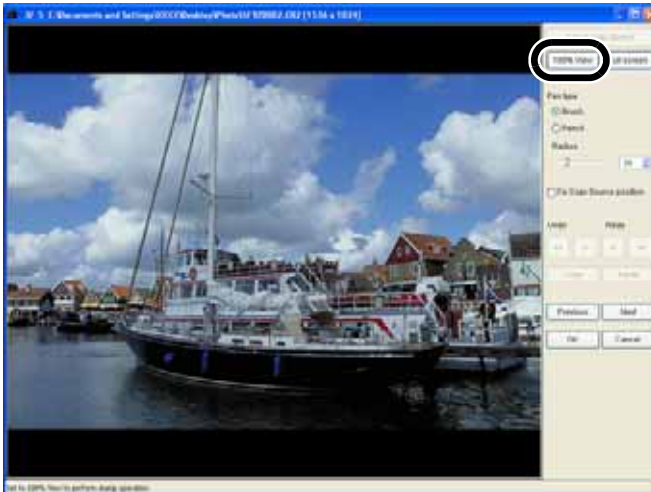
You can copy a section of an image and paste (“stamp”) it on top of an area you want to correct in the same image.

1 Select the [Tools] menu ► [Start Stamp tool].

→ The copy stamp tool window appears.

2 Click the [100% View] button.

→ The image is displayed in the 100% view.

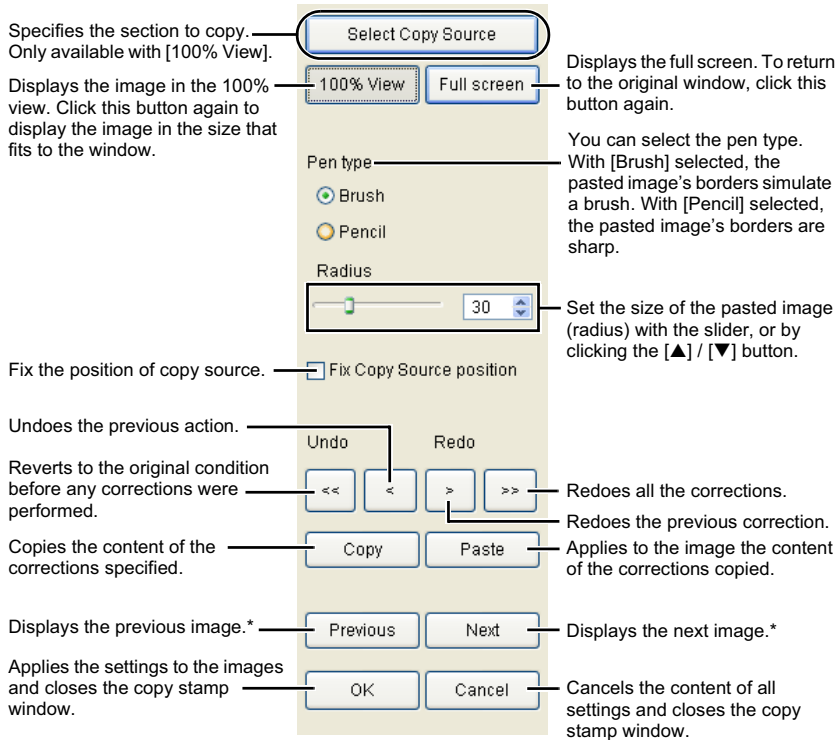


3 Display the section you want to correct.

● Drag the image to display the section you want to correct.

4 Specify the section to copy.

- Click the [Select Copy Source] button and then click the section to copy.
- To change the copied section, repeat the above procedure.



*Functions when you have selected multiple images and the copy stamp windows are displayed

5 Correct the image.

- Drag on the section you want to correct on the image. [+] on the window indicates the copy origin, and [○] indicates the copy destination.
- ➔ The copied image is pasted in the position where you dragged.

6 Click the [OK] button.



- In step 2, you can double-click on the section you want to correct to display the 100% view. You can also double-click again to return to the original window.
- In step 4, you can also specify the section you want to copy by pressing and holding down the <Alt> key and clicking on the section to copy.
- When the full screen is displayed, you can press the <F11> key on the keyboard or the <Alt>+<Enter> key to return to the original window.
- For the shortcut key list, see 4-7.

Editing RAW Images

You can perform various edits on the RAW images that are supported by Digital Photo Professional.

1 Select a RAW image (1-7).

2 Edit the RAW image (1-23 to 1-29).

- You can apply edits to other images by copying and pasting the edit data to the other images (1-31).
- You can revert edited images to the last saved settings or shot settings (1-32).

3 Save the edited image (1-33).

- You cannot edit PowerShot Pro1 RAW images.
- Before exiting Digital Photo Professional, you must save the edited images (1-33).

- When multiple images are selected, the edits are applied to all the selected images.
- The editing data can be saved in a separate file (1-30).
- The edited images can be transferred to retouching software (1-39).

Adjusting the White Balance

You can adjust the white balance using the mode settings, color temperature settings, color wheel, and click white balance function.

1 Click the [White balance] button.

- The [White balance adjustment] dialog box appears.
- Alternatively, you can display this dialog box by selecting [Adjustment] menu ▶ [White Balance].



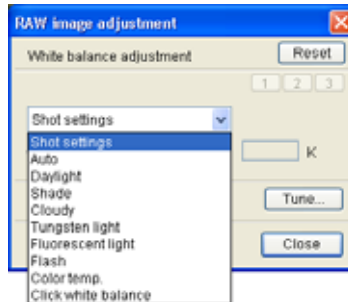
2 Adjust the white balance by making each setting (1-24 to 1-27).

3 Click the [Close] button.

Selecting the White Balance

You can select white balance from the list box.

Select the white balance.

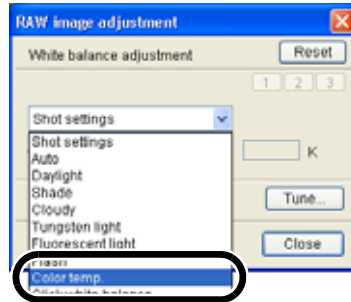


White Balance	Details	Color Temp. K (Kelvin)
Shot settings	To apply the white balance setting used when the shot was taken.	—
Auto	Automatically adjusts the white balance.	Approx. 3000 to 7000
Daylight	For sunny daylight outdoors.	Approx. 5200
Shade	For shaded areas outdoors.	Approx. 7000
Cloudy	For cloudy or hazy days and during sunset.	Approx. 6000
Tungsten light	For tungsten (light bulb) light.	Approx. 3200
Fluorescent light	For white fluorescent light.	Approx. 4000
Flash	When flash is used.	Approx. 6000
Color temp.	You can manually set color temperature for 2800 to 10000K (in 100K increments) (1-25).	Approx. 2800 to 10000
Click white balance	Displayed for images on which you performed the click white balance.	—

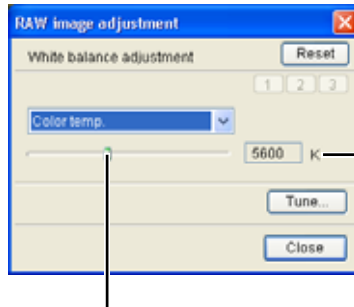
Specifying the Color Temperature

You can specify the color temperature in the range of 2800 to 10000K (in 100K increments) to adjust the white balance.

1 Select [Color temp.].



2 Adjust an image while viewing it.



Drag the slider left or right to adjust the color temperature.

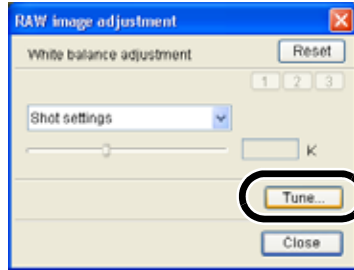
Adjusting with the Color Wheel

You can select a desired color from the color wheel to adjust the white balance.

You can also specify the hue in the range of 0 to 359 (in 1-stop increments), and the saturation in the range of 0 to 255 (in 1-stop increments).

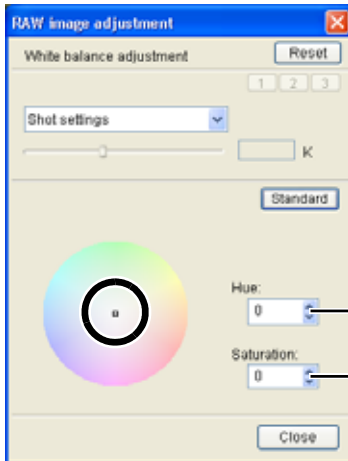
1 Click the [Tune] button.

→ The color wheel appears.



2 Adjust an image while viewing it.

● Drag [□] to adjust an image.



Hue: 0 — Enter a value in a range of 0 to 359 or click the [▲] / [▼] buttons to specify the hue.

Saturation: 0 — Enter a value in a range of 0 to 255 or click the [▲] / [▼] buttons to specify the saturation.

Click White Balance Function

Makes white the standard for the part you selected and automatically adjusts the white balance.

1 Click the [Click (RAW)] button.

- When you move the cursor over the image, the cursor [🖱️] changes to [🔍].



2 Click the part where is to be the standard.

- The white balance is adjusted so that the point clicked appears white.
- If you click on another point over the image, the white balance is adjusted again.
 - When you finish this operation, click the [Click (RAW)] button or right-click.



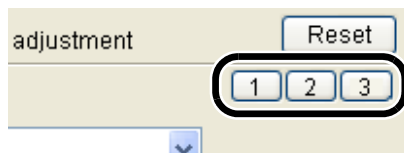
- The coordinates of the cursor position and the RGB values (8-bit conversion) of an image are displayed in the lower-left of the main window (1-2).
- The image is adjusted based on the value of 1×1 pixels from the clicked point.
- You can also adjust the white balance by clicking an achromatic color (neutral gray) part of the image.

Personal White Balance

You can apply the personal white balance (2-15) that you registered in the edit window or the edit image window to images.

Click the [1], [2] or [3] button.

- The registered personal white balance is applied to the image.



- You cannot use the personal white balance if you have not registered it.

Adjusting the Brightness

You can adjust the brightness in the range of -2.0 to $+2.0$ (in one-sixth-stop increments for the slider, and in 0.01-stop increments when entering a value).

1 Click the [Brightness (RAW)] button.

- The [Brightness adjustment] dialog box appears.
- Alternatively, you can display this dialog box by selecting [Adjustment] menu ▶ [Brightness adjustment (RAW)].



2 Adjust an image while viewing it.

A screenshot of the 'RAW image adjustment' dialog box. The 'Brightness adjustment' section is visible, showing a horizontal slider with a green handle and a numerical input field set to '0.00'. A 'Reset' button is located to the right of the slider. Annotations with arrows point to the slider and the 'Reset' button.

Drag the slider left or right to adjust the brightness.

Restores the image to its original settings.

Enter a value to adjust the brightness.

3 Click the [Close] button.

Specifying Color Space

You can set a color space to the selected RAW image different to the one set in [Default settings of Work color space] in the preferences (1-45).

Select [Adjustment] menu ▶ [Work color space] ▶ [sRGB], [Adobe RGB], or [Wide Gamut RGB].



The specified color space is added to the ICC profile that is embedded in TIFF or JPEG images that have been converted from RAW images and saved (1-34, 1-36).

A color space is the reproducible color range (the characteristics of color gamut). Digital Photo Professional supports the color space of sRGB, Adobe RGB, and Wide Gamut RGB.

sRGB : Widely used for the standard color space of monitors, digital cameras, and scanners.

Adobe RGB : A wider color space than sRGB. Mainly used for printing for business purposes.

Wide Gamut RGB : A wider color space than Adobe RGB.

Using Edits (Recipe Data)

Editing data that has been applied to JPEG, TIFF, and RAW images (1-15 to 1-21, 2-7 to 2-11) or editing data that has been applied to RAW images (1-22 to 1-29, 2-12 to 2-18) can be copied and applied to other images. Editing data can also be saved as a separate file containing editing data only and loaded into other images. In Digital Photo Professional, editing data is referred to as “recipe data”.

Saving the Recipes

1 Select an image and then select [Edit] menu ▶ [Save recipe in file].

→ The [Save As] dialog box appears.

2 Select the destination folder, enter the file name, and then click the [Save] button.



- When you select [Save recipe in file], only recipe data (editing data) is saved as a separate file. If you wish to save the image to which the edits were applied, see “Saving Edited Images” (1-33).
- Image rotation (1-15), trimming (1-18) and image correction (copy stamp) (1-20) are not included in recipe data.

Loading and Pasting Recipes

1 Select an image and then select [Edit] menu ▶ [Read recipe from file].

→ The [Open] dialog box appears.

2 Select a recipe and click the [Open] button.

3 Select an image to which the recipe will be applied and then select [Edit] menu ▶ [Paste recipe to selected photo].



Editing data that can be performed on RAW images only (1-22 to 1-29, 2-12 to 2-18) cannot be applied to JPEG and TIFF images. If you try to apply editing data that can be applied to all image types (JPEG, TIFF, or RAW images) (1-15 to 1-21, 2-7 to 2-11) together with editing data that can be applied only to RAW images (1-22 to 1-29, 2-12 to 2-18), and the target image is in JPEG or TIFF, only the editing data applicable to JPEG and TIFF is applied.

Copying Recipes and Applying to Other Images

1 Select the image from which a recipe will be copied and then select **[Edit] menu ▶ [Copy recipe to clipboard]**.

→ The recipe is copied.

2 Select the image to which the recipe will be applied and then select **[Edit] menu ▶ [Paste recipe to selected photo]**.

→ The recipe is applied to the image.

- Image rotation (1-15), trimming (1-18) and image correction (copy stamp) (1-20) are not included in recipe data.
- Editing data that can be performed on RAW images only (1-22 to 1-29, 2-12 to 2-18) cannot be applied to JPEG and TIFF images. If you try to apply editing data that can be applied to all image types (JPEG, TIFF, or RAW images) (1-15 to 1-21, 2-7 to 2-11) together with editing data that can be applied only to RAW images (1-22 to 1-29, 2-12 to 2-18), and the target image is in JPEG or TIFF, only the editing data applicable to JPEG and TIFF is applied.

1

Displaying Thumbnail Images and Performing Basic Edits in the Main Window

Reverting Edited Images to Their Original Condition

You can cancel all the edits for images, and revert the edited images to their original settings before being edited or when shots were taken.

Reverting to Last Saved Settings

Select an image and then select [Adjustment] menu ▶ [Revert to last saved settings].

🔍 If you select multiple images, all the edited images that you selected are reverted to the last saved settings.

Reverting to Shot Settings

Select an image and then select [Adjustment] menu ▶ [Revert to shot settings].

🔍 If you select multiple images, all the edited images that you selected are reverted to the shot settings.

Saving Edited Images

You can apply edits to one or more images and save the edited images.

Saving by Overwriting

You can apply edits to an image and overwrite the existing image.

Select an image and then select [File] menu ▶ [Add recipe and save].

Saving and Renaming

You can apply edits to images and save the new images with another name.

1 Select an image and then select [File] menu ▶ [Add recipe and save as].

→ The [Save As] dialog box appears.

2 Select the destination folder, enter the file name, and then click the [Save] button.

Saving a Thumbnail of the Image

Create thumbnails to use for display in the main window, and save each image.

The speed at which the image is displayed on the main window and the quality of the image is increased.

Select the image, and then select [File] menu ▶ [Save Thumbnail].



A large number of images may take some time to save.

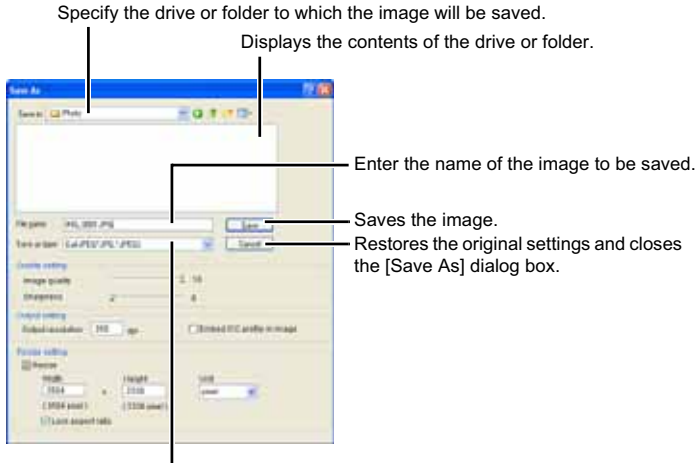


Converting and Saving RAW Images while Renaming Them

You can convert edited RAW images to the TIFF or JPEG and save them with another name.

1 Select an image and then select [File] menu ▶ [Convert and save].

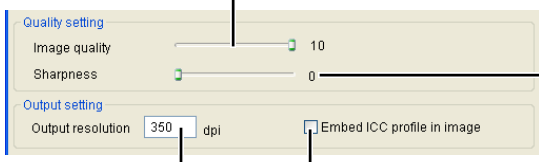
→ The [Save As] dialog box appears.



Select [Exif-JPEG], [Exif-TIFF 8bit] or [TIFF 16bit] as the image type used when the image is saved. The file extensions used for the saved files are shown below.

Image Type	Extension
Exif-JPEG image	.JPG
Exif-TIFF 8bit image	.TIF
TIFF 16bit image	.TIF

When [Exif-JPEG] is selected from the [Save as type] list box, specify one of 10 levels ([1] to [10]) of image quality (compression rate). Higher values give better JPEG image quality.

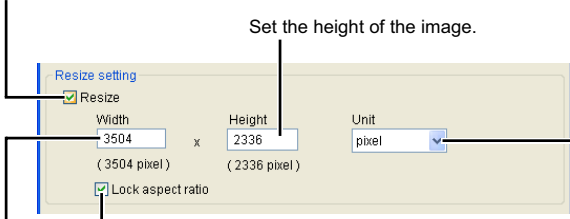


Specify one of 6 levels ([0] to [5]) of sharpness for the image to be saved. Higher values give sharper edges.

Click this checkbox to embed an ICC profile in the image to be saved.

Specify a value between 1 and 60,000 dpi as the output resolution used for the image to be saved.

Click this checkbox to change the size of the image to be saved.



Set the height of the image.

Select a unit of measurement for the image from [cm], [inch] or [pixel].

Click this checkbox to fix the vertical/horizontal ratio of the image.

Set the width of the image.

2 Specify the settings and click the [Save] button.

If you have saved an image in which [Wide Gamut RGB] color space (1-29, 1-45) has been specified, an ICC Profile is automatically embedded even if you have not clicked [Embed ICC profile in image].



- You can save and rename images without editing them.
- To perform linear processing (2-17), select [TIFF 16bit] before saving images.
- The specified preferences (1-45) or individually specified color space (1-29) are added to the ICC profile embedded in TIFF or JPEG images. An ICC profile contains color information, such as color properties and color spaces of devices which are authorized by International Color Consortium (ICC). With this ICC profile, many color management systems can minimize the color differences between devices.
- [Resize setting] changes the image size by applying the larger numeric value set in "Width" or "Height" to the long edge of the image, even when horizontal and vertical images are mixed together.



Converting and Saving Images in a Single Operation (Batch-processing)

You can save and rename multiple edited images in a single operation. You can also convert edited RAW images to JPEG or TIFF formats and save them in a single operation.

- 1 Edit an image (1-15 to 1-29).
- 2 Select images to be converted and saved in a single operation (1-7).

3 Click the [Batch process] button.

- The [Batch settings] dialog box appears.
- Alternatively, you can display this dialog box by selecting [File] menu ▶ [Batch process].



4 Specify the settings and click the [Execute] button.

- The process dialog box appears, allowing images to be saved in a single operation.
- When processing is complete, the images are saved in the specified folder and the [Exit] button appears on the process dialog box.

Displays the file names of the images to be saved as a batch.

Specify the folder where the images are to be saved after conversion. The specified folder name appears to the side of the [Browse] button.

Select [Exif-JPEG], [Exif-TIFF 8bit] or [TIFF 16bit] as the image type used when the images are saved. See 1-34 for extensions used when the image is saved.

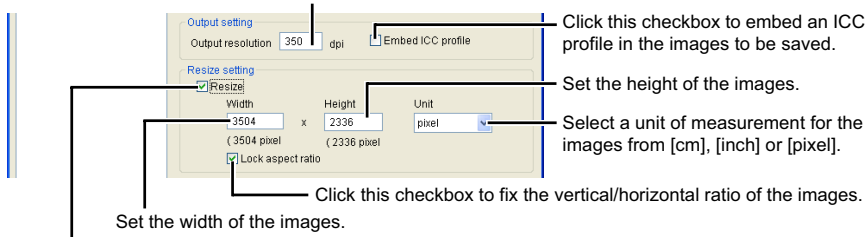
When [Exif-JPEG] is selected from the [Kind of file] list box, specify one of 10 levels of image quality (compression rate). The larger the numeric value, the higher the image quality.

Specify one of 6 levels of sharpness for the images to be saved. The larger the numeric value, the sharper the images.

Batch processing begins.

Restores the original settings and closes the [Batch settings] dialog box.

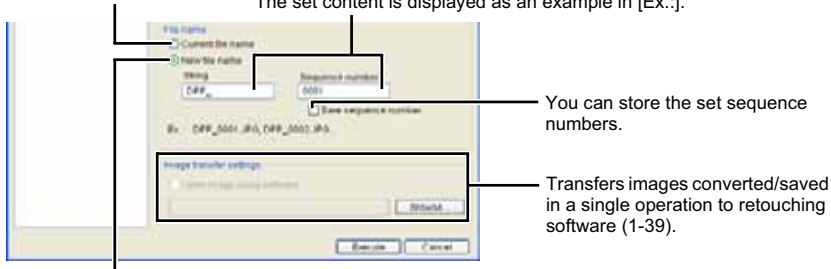
Specify a value between 1 and 60,000 dpi as the output resolution used for the images to be saved.



Click this checkbox to change the size of the images to be saved.

Select this to save images without renaming them.

Specify the character string and serial number when [New file name] radio button is selected. The set content is displayed as an example in [Ex..].



Select this to rename images while saving them.

5 Click the [Exit] button.

- You cannot save multiple images in a single operation unless you specify [Sequence number] when the [New file name] radio button is selected for [File name].
- If you have saved an image in which [Wide Gamut RGB] color space (1-29, 1-45) has been specified, an ICC Profile is automatically embedded even if you have not clicked [Embed ICC profile].

- You can also save and rename multiple images without editing them in a single operation.
- The specified preferences (1-45) or individually specified color space (1-29) are added to the ICC profile embedded in TIFF or JPEG images. An ICC profile contains color information, such as color properties and color spaces of devices which are authorized by International Color Consortium (ICC). With this ICC profile, many color management systems can minimize the color differences between devices.
- [Resize setting] changes the image size by applying the larger numeric value set in "Width" or "Height" to the long edge of the image, even when horizontal and vertical images are mixed together.
- The batch processing function is independent of other functions. Therefore, during batch saving, you can perform other operations in the main, edit, and edit image windows.



Changing File Names in a Single Operation

You can change file names in a single operation.

- 1** Select the images for which you want to change the file names (1-7).
- 2** Select the [Tools] menu ► [Start Rename tool].
→ The rename tool window appears.
- 3** Specify the settings and then click the [Execute] button.
→ The operation begins and the file names are changed.

Set the file name by selecting [String], [Shooting Date/Time] and [Sequence number] from each item. You can set [String] for more than one item but you can only set [Shooting Date/Time] and [Sequence number] for one of each. To set [Shooting Date/Time] or [Sequence number] for a different item, first set [String] where [Shooting Date/Time] or [Sequence number] is originally set and then set that item to [Shooting Date/Time] or [Sequence number].

The screenshot shows the 'Rename' dialog box with the following annotations:

- File name:** A dropdown menu with options: String, Shooting Date/Time, Sequence number.
- Extension:** A dropdown menu with options: .raw, .jpg, .tiff, .dng.
- Shooting Date/Time:** A date and time selector.
- Base sequence number:** A numeric input field.
- Original file name:** A list of files: WP123001.JPG, WP123002.JPG, WP123003.JPG, WP123004.JPG.
- Modified file name:** A list of files: DFP_0312-04_0004.CR2, DFP_0312-04_0005.JPG, DFP_0312-04_0006.JPG, DFP_0312-04_0007.JPG, DFP_0312-04_0008.JPG.
- Buttons:** OK, Cancel, and a 'Start' button.

Annotations and their descriptions:

- Selects the order of the files.** (Points to the 'File name' dropdown)
- Selects the extension.** (Points to the 'Extension' dropdown)
- You can store a set sequence number.** (Points to the 'Base sequence number' field)
- Makes the file names of RAW images and JPEG images recorded at the same time the same (except for the extension).** (Points to the 'File name' dropdown)
- Selects the shot date and time.** (Points to the 'Shooting Date/Time' selector)
- Enters an underbar.** (Points to the 'Base sequence number' field)
- Copies the image and changes the file name.** (Points to the 'Copy images' checkbox)
- When [Copy_Rename] is checked, specifies the save destination of the copied images.** (Points to the 'Copy images' checkbox)
- The original file name is displayed.** (Points to the 'Original file name' list)
- The modified file name is displayed.** (Points to the 'Modified file name' list)
- When setting the sequence number, enter the start number and the number of figures.** (Points to the 'Base sequence number' field)
- Modifies the file name.** (Points to the 'Start' button)
- Cancel the content of all settings and closes the rename tool window.** (Points to the 'Cancel' button)

Transferring Images to Retouching Software

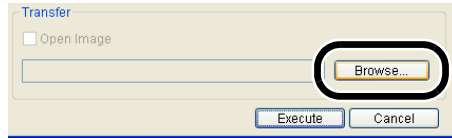
You can transfer images converted/saved in a single operation to retouching software. The description given here use Adobe Photoshop 7.0, as an example.

1 Set convert/save in a single operation.

- Follow steps 1 to 4 of “Converting and Saving Images in a Single Operation (Batch-processing)” (1-36).

2 Click [Browse] button in the [Batch settings] window.

→ The [Open] window appears.

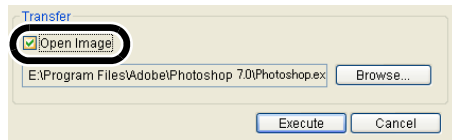


3 Select the retouching software (Photoshop 7.0) to which you will transfer the image.

- Select [C:] drive ▶ [Program Files] ▶ [Adobe] ▶ [Photoshop 7.0] ▶ [Photoshop], and then click the [Open] button.
- The [Open] window closes and Photoshop is set in [Transfer] in the [Batch settings] window.



4 Click the [Open Image] checkbox.



5 Click the [Execute] button.

- The processing window appears and saving in a single operation begins.
- When saving in a single operation is completed, Photoshop starts up and the transferred images are displayed.

🔊 In order to transfer images, you will need retouching software such as Adobe Photoshop.

Printing Images

Images can be automatically adjusted and printed within the print range.

1 Select an image and then select [File] menu ▶ [Print].

2 Select a printer to be used and then click the [Print] button.
→ Printing begins.



- You can set a printer profile to be used for printing (1-45).
- If you have set CMYK simulation profile (1-45), the image is printed in a tone corresponding to the specified [CMYK simulation profile].

Printing with Easy-PhotoPrint

Easy-PhotoPrint is printing software dedicated for Canon BJ printers.

If Easy-PhotoPrint 2.1 or later has been installed in your computer, you can print images with Easy-PhotoPrint.

Select an image and then select [File] menu ▶ [Print with Easy-PhotoPrint].

- Easy-PhotoPrint starts up.
- Follow the instructions displayed on the Easy-PhotoPrint window to print images.



- To print images with Easy-PhotoPrint, you need Easy-PhotoPrint 2.1 or later and a Canon BJ printer that supports Easy-PhotoPrint 2.1 or later.
- The specified Output resolution (1-42) and trimming (1-18) are not supported.
- The setting of CMYK simulation (1-45) is not supported.



You can select [Rendering intents when using Easy-PhotoPrint] from [Perceptual] and [Colorimetric] (1-45).

Displaying Images in EOS Capture ■

Digital Photo Professional version 1.6 is compatible with EOS Capture version 1.1 or later. If EOS Capture version 1.1 or later has been installed in your computer, Digital Photo Professional displays the images that are shot with EOS Capture in real time.

1 Connect the camera to your computer.

2 Select [Tools] menu ▶ [Start EOS Capture].
→ EOS Capture starts up.

3 Take a shot.

- Click the [Release] button in EOS Capture or press the shutter button on the camera to take a shot.
- The shot is displayed on the Digital Photo Professional main window.

1

Displaying Thumbnail Images and Performing Basic Edits in the Main Window

Specifying the Preferences

You can specify various settings for Digital Photo Professional.

1 Select [Tools] menu ▶ [Preferences].

→ The [Preferences] dialog box appears.

2 Select the desired tab, specify the settings, and then click the [OK] button.

→ The settings are applied and the [Preferences] dialog box closes.

Allows you to select whether the edited image is saved automatically, or the confirmation dialog box is displayed when you exit Digital Photo Professional or change images displayed in the main window to the ones in another folder.

Allows you to select whether the folder that was open the last time is displayed or the specified folder is always displayed when Digital Photo Professional starts up.

Displays the description of [Operating mode].

Restores the settings to their original ones and closes the [Preferences] dialog box.

Applies the settings and closes the [Preferences] dialog box.

If you click this checkbox, the edit image window is displayed automatically when you start up EOS Capture.

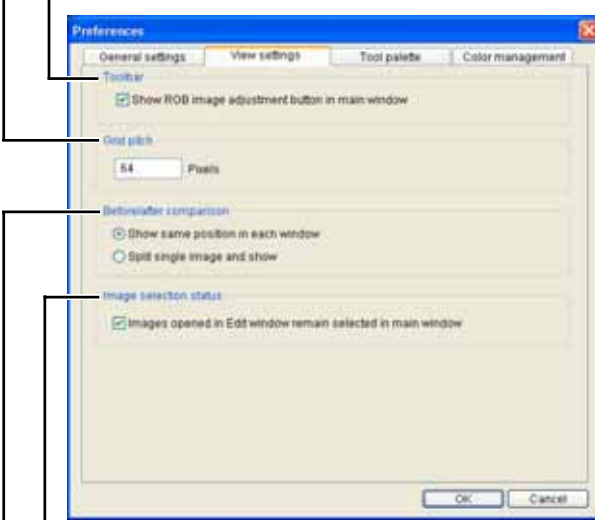
Allows you to set the output resolution default value from 1 to 60,000 dpi when RAW images are converted to JPEG or TIFF images and saved.

Specify the image quality for displaying or saving images.

- [Quality priority] : Images are displayed and saved with maximum quality because additional filter processings are applied. However, it takes more time to display or save images.
- [Standard] : Images are displayed at maximum speed with no additional filter processing. Images are saved at the same quality as [Quality priority].
- [Speed priority] : Images are displayed and saved at maximum speed because no additional filter processing is applied.

Allows you to specify the grid spacing in a range of 8 to 256 pixels used when the grid line is displayed on the edit window or the edit image window.

Removing the check mark hides the [Click] button and the [Brightness] button from the main window.



If you click this checkbox, the image that has been displayed on the edit window is selected on the main window when you close the edit window.

Select the display mode for displaying the edited and original images for comparison on the edit or edit image window (2-6).

[Show same position in each window]

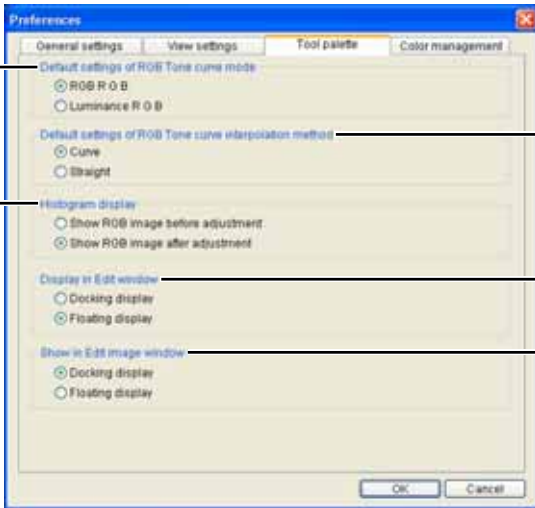


[Split single image and show]



Allows you to select whether the histogram for the original image is displayed or the histogram for the edited image is displayed, in the [RGB image adjustment] tab sheet on the tool palette.

Allows you to select whether the tone curve is displayed in RGB or Brightness in the [RGB image adjustment] tab sheet on the tool palette.



Allows you to select whether points on the tone curve displayed in the [RGB image adjustment] tab sheet of the tool palette are connected with a curve or a straight line.

Allows you to select whether the tool palette is displayed as [Docking display] (within the edit window) or [Floating display] (another window).

Allows you to select whether the tool palette is displayed as [Docking display] (within the edit image window) or [Floating display] (another window).

If you have selected [Floating display] with [Display in Edit window] or [Show in Edit image window], or selected the [Docking display] and enlarged it, a thumbnail of the image is displayed in the tool palette.



Enlarged display position

Displays the enlarged display position. You can also move the display position by dragging.



Thumbnail display

A thumbnail of the image you have selected is displayed.



If you change the setting for [Default settings of RGB Tone curve mode] or [Default settings of RGB Tone curve interpolation method], the changed setting is applied after restarting Digital Photo Professional. However, the changed setting is not applied to images with the [RGB] mark (1-5) that have been edited (1-16 to 1-17, 2-8 to 2-11) before the setting is changed. You should change the setting for each of the images using the menu that appears by right-clicking on a tone curve (2-9).

Select [sRGB] or [Monitor profile] as the color space for the monitor where the images will be displayed. If you select the [Monitor profile] radio button, click the [Browse] button and select a profile for the used monitor.

Select [sRGB], [Adobe RGB] or [Wide Gamut RGB] as the color space that is applied when you convert and save RAW images as TIFF or JPEG images.


If you have set a printing profile, select a color matching system from [Perceptual] or [Colorimetric].

Select [Perceptual] or [Colorimetric] as the color matching mode for printing with Easy-PhotoPrint (1-40).

Select a CMYK simulation profile to be used in CMYK simulation. The profile selected for image display and printing is applied, and [CMYK] is displayed at the bottom of each window (1-2, 2-2, 3-3).

Select a printer profile to be used for printing images (1-40).

- If you change the setting for [Default settings of Work color space], the changed setting is applied after restarting Digital Photo Professional. However, the changed setting is not applied to images with the [RGB] mark (1-5) that have been edited (1-16 to 1-17, 2-8 to 2-11) before the setting is changed. You should change the setting for each of the images using [Work color space] from the [Adjustment] menu (1-29).
- To select a monitor or printer profile, you need to have previously installed the monitor and printer profiles to be used on the computer. For details on the monitor and printer profiles to be used, please refer to the user manual of each device.

 The specified color space is added to the ICC profile that is embedded in TIFF or JPEG images that have been converted from RAW images and saved (1-34, 1-36). A color space is the reproducible color range (the characteristics of color gamut). Digital Photo Professional supports the color space of sRGB, Adobe RGB, and Wide Gamut RGB.

sRGB : Widely used for the standard color space of monitors, digital cameras, and scanners.

Adobe RGB : A wider color space than sRGB. Mainly used for printing for business purposes.

Wide Gamut RGB : A wider color space than Adobe RGB.

Performing Detailed Edits in the Edit Window



This chapter describes the functions of the edit window, and how to display images and perform detailed edits on them.

Displaying the Edit Window	2-2
Selecting the Image Display Mode	2-5
Selecting the Display Size	2-5
Displaying the Grid lines	2-5
Displaying the Edited Image and the Original at the Same Time	2-6
Editing Images	2-7
Adjusting the Tone Curve	2-8
Adjusting the Hue and Saturation	2-11
Editing RAW Images	2-12
Adjusting the Brightness	2-13
Adjusting the White Balance.....	2-13
Adjusting the Dynamic Range	2-16
Adjusting the Color	2-18

Displaying the Edit Window

You can enlarge a single image and perform detailed edits on it in the edit window. You can display multiple images in the edit window and edit them while comparing each of them. Up to 36 images can be displayed in the edit window.

- This chapter describes the functions that you can operate in the edit window only. For instructions on operating the functions common to those in the main window, refer to the page described with each function.

Double-click a thumbnail image.

- The edit window appears.
- A low resolution image is displayed first in the edit window, and then it switches to a high resolution image.
- Alternatively, you can display this window by selecting [File] menu ▶ [Open in Edit window].

Edit Window

Menu bar

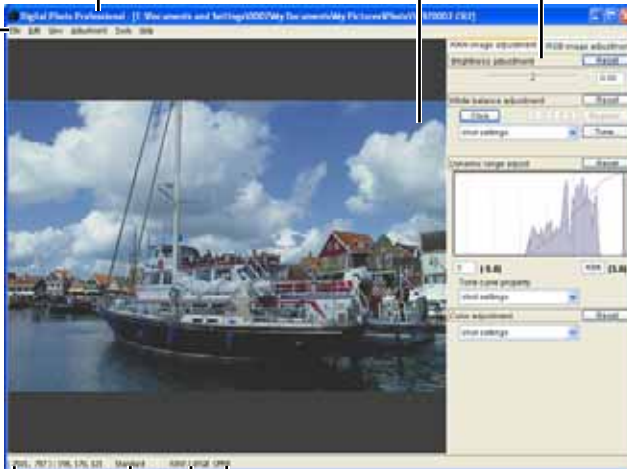
Displays the [File], [Edit], [View], [Adjustment], [Tools], and [Help] menus.

Path display

Displays the path of the drive, folder and file name that contain the currently displayed image.

Image display area

Tool palette



Displays the operation mode (1-42).

When you set CMYK simulation profile (1-45), [CMYK] is displayed.

Displays the color space of the image and the work color space. (1-29, 1-45).

Displays the coordinates of the cursor position and the RGB values (8-bit conversion) of an image.

- To exit the edit window, select [File] menu ▶ [Close].



- For some images, it may take some time to switch to the high resolution image.
- You can select whether the tool palette is displayed as another window or displayed within the same window (1-44).

Menu Bar

File menu

File		
1-33	Add recipe and save	Ctrl+S
1-33	Add recipe and save as...	Shift+Ctrl+S
1-34	Convert and save...	Ctrl+D
1-40	Print...	Ctrl+P
1-13	Info...	Ctrl+I
2-2	Close	Ctrl+W

Adjustment menu

Adjustment		
	Rotate Left	Ctrl+L
	Rotate Right	Ctrl+R
1-29	Work color space	1-15
	Revert to last saved settings	1-15
	Revert to shot settings	1-15

Work color space	
sRGB	
• Adobe RGB	
Wide Gamut RGB	

Edit menu

Edit		
1-30	Save recipe in file...	
1-30	Read recipe from file...	
1-31	Copy recipe to clipboard	
	Paste recipe	

1-30, 1-31

Tools menu

Tools		
	Start Trimming tool	Alt+C
	Start Stamp tool	Alt+S
	Preferences...	Ctrl+K

View menu

Shows/hides the tool palette.

View		
	<input checked="" type="checkbox"/> Tool palette	Ctrl+T
2-5	Grid lines	
2-6	Before/after comparison	
2-6	Change up/down/left/right	
2-5	Fit to window	Ctrl+4
2-5	50% view	Ctrl+1
2-5	100% view	Ctrl+2
2-5	200% view	Ctrl+3

Help menu

Help		
	Version information	

Displays the version information for Digital Photo Professional.

 For the shortcut key list, see 4-5.

Tool Palette

RGB image adjustment tab sheet (2-7) RAW image adjustment tab sheet (2-12)



Selecting the Image Display Mode

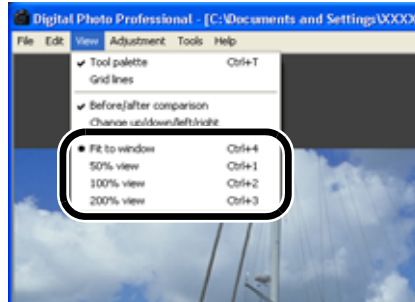
You can change the size and method in which images are displayed.

Selecting the Display Size

You can select the image size from [Fit to window] (Fitting to the image display area), [50% view], [100% view] (actual pixel size), and [200% view].

Select [View] menu ▶ [Fit to window], [50% view], [100% view], or [200% view].

- When you display an image in a larger size, you can change the display position by dragging the image.



In the [Fit to window] display, if you double-click a section you want to enlarge, the display changes to the [100% view] display. If you double-click on the image in the [50% view], [100% view] or [200% view] display, the display changes to the [Fit to window] display.

Displaying the Grid lines

You can display a grid line that allows you to check the horizontal or vertical level of the image.

Select [View] menu ▶ [Grid lines].

- Performing the same operation again hides the grid line.
- You can specify the grid spacing (1-43).



Displaying the Edited Image and the Original at the Same Time

You can display the edited image and the original at the same time.

Select [View] menu ▶ [Before/after comparison].



- You can also display edited and original images in one split window (1-43).

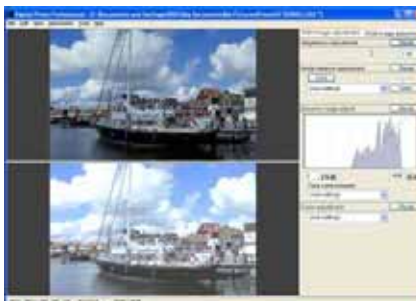


Changing the Display Position

You can also tile images vertically.

Select [View] menu ▶ [Change up/down/left/right].

- Performing the same operation again tiles images horizontally.



Editing Images

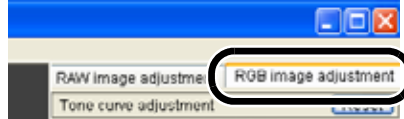
You can perform various edits on the RAW, JPEG, and TIFF images that are supported by Digital Photo Professional.

1 Display the image on the edit window (2-2).

- When multiple images are displayed, click the image for which you wish to edit to place it on the top window.

2 Select the [RGB image adjustment] tab on the tool palette.

- The [RGB image adjustment] tab sheet appears.





3 Edit the image (2-8 to 2-11).

- You can apply edits to other images by copying and pasting the edit data to the other images (1-31).
- You can revert edited images to the last saved settings or shot settings (1-32).

4 Compare the edited image with the original (2-6).

5 Save the edited image (1-33).

 Before exiting Digital Photo Professional, you must save the edited images (1-33).

 The editing data can be saved in a separate file (1-30).

2

Performing Detailed Edits in the Edit Window

Adjusting the Tone Curve

You can use the tone curve, highlight/shadow points, brightness, and contrast to adjust the image tone.

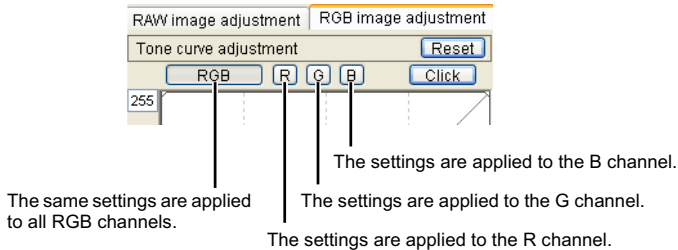
A tone curve shows the brightness and color saturation for the original image (input) and the adjusted image (output) in the form of a line graph. You can use the tone curve to adjust the image brightness and color saturation values that were set by the camera automatically when the shot was taken. Also, you can adjust the input and output of the entire image in a single operation, or individually adjust the input and output of [R] (Red), [G] (Green) and [B] (Blue). The horizontal axis shows the brightness and color saturation for the original image (input) image, with the left-hand end indicating shadow (darker areas of the image) and the right-hand end indicating highlights (brighter areas of the image).

The vertical axis shows the brightness and color saturation for the adjusted image (output), with the lower end indicating shadow and the upper end indicating highlights.



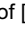
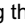
Adjusting the Tone Curve

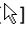
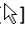
You can switch the tone curve display values between RGB and Brightness (1-44).

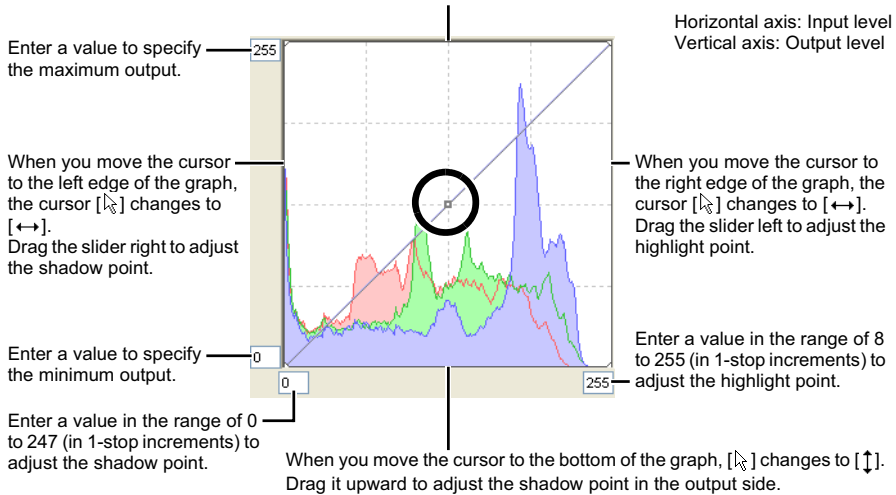
1 Click the button to select a channel.





2 Adjust the tone curve.

- Clicking the tone curve shows  on the tone curve. Drag  to your desired location.
- You can specify up to 8 points of .
- Double-clicking  or pressing the <Delete> key on the keyboard deletes it.

When you move the cursor to the top of the graph,  changes to .
Drag it downward to adjust the highlight point in the output side.



 The minimum number of steps between the shadow point and the highlight point is 8.

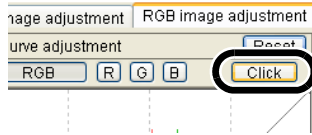
 You can change the tone curve interpolation method or tone curve modes from the menu that appears by right-click on a tone curve, or from the [Tool palette] tab sheet in the [Preferences] dialog box (1-44).

Click White Balance Function

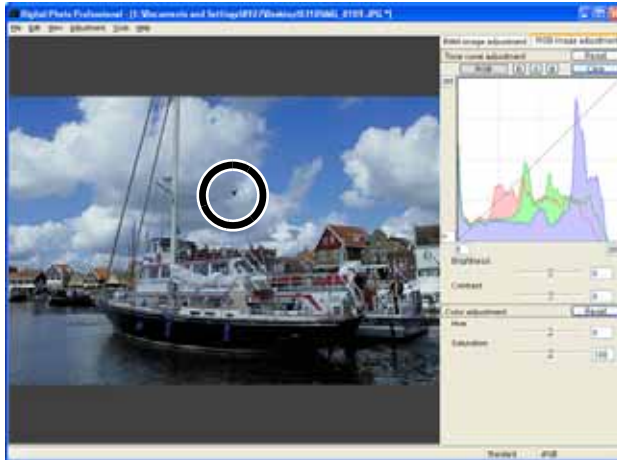
Makes white the standard for the part you selected and automatically adjust the white balance.

1 Click the [Click] button.

→ When you move the cursor over the image, the cursor [☞] changes to [☞].



2 Click the part where is to be the standard.



- The white balance is adjusted so that the point clicked appears white.
- If you click on another point over the image, the white balance is adjusted again.
- When you finish this operation, click the [Click] button or right-click.

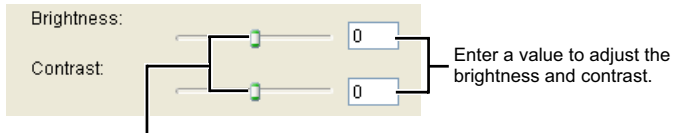


- The image is adjusted based on the value of 1 × 1 pixels from the clicked point.
- You can also adjust the white balance by clicking an achromatic color (neutral gray) part of the image.

Adjusting the Brightness and Contrast

You can adjust the brightness and contrast in the range of -100 to $+100$ (in 1-stop increments).

Adjust an image while viewing it.

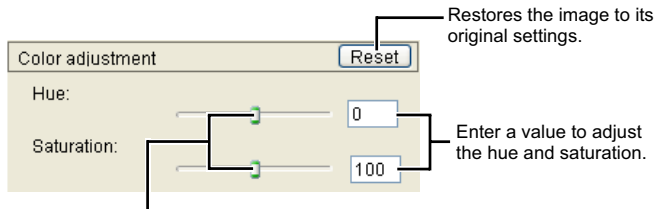


Drag the slider left or right to adjust the brightness and contrast.

Adjusting the Hue and Saturation

You can adjust the hue in the range of -30 to $+30$ (in 1-stop increments) and the saturation in the range of 0 to 200 (in 1-stop increments).

Adjust an image while viewing it.



Drag the slider left or right to adjust the hue and saturation.

Editing RAW Images

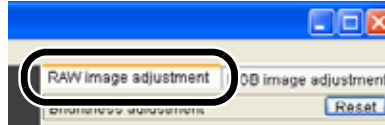
You can perform more detailed edits on RAW images that are supported by Digital Photo Professional, than in the main window.

1 Display the RAW image in the edit window (2-2).

- When multiple images are displayed, click the image for which you wish to edit to place it in the top window.

2 Select the [RAW image adjustment] tab on the tool palette.

- The [RAW image adjustment] tab sheet appears.




3 Edit the RAW images (2-13 to 2-18).

- You can apply edits to other images by copying and pasting the edit data to the other images (1-31).
- You can revert edited images to the last saved settings or shot settings (1-32).

4 Compare the edited image with the original (2-6).

5 Save the edited image (1-33).

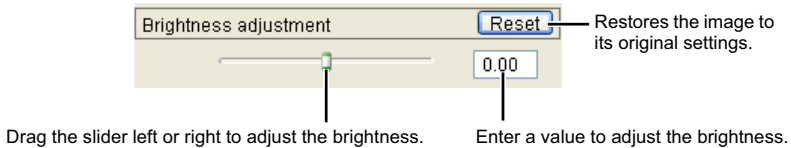
- You cannot edit PowerShot Pro1 RAW images.
- Before exiting Digital Photo Professional, you must save the edited images (1-33).

 The editing data can be saved in a separate file (1-30).

Adjusting the Brightness

You can adjust the brightness in the range of -2.0 to $+2.0$ (in one-sixth-stop increments for the slider, and in 0.01-stop increments when entering a value).

Adjust an image while viewing it.



Adjusting the White Balance

You can adjust the white balance using the mode settings, color temperature settings, color wheel, and click white balance function.

Selecting the White Balance (1-24)

You can select white balance from the list box.

Specifying the Color Temperature (1-25)

You can specify the color temperature in the range of 2800 to 10000K (in 100K increments) to adjust the white balance.

Click White Balance Function

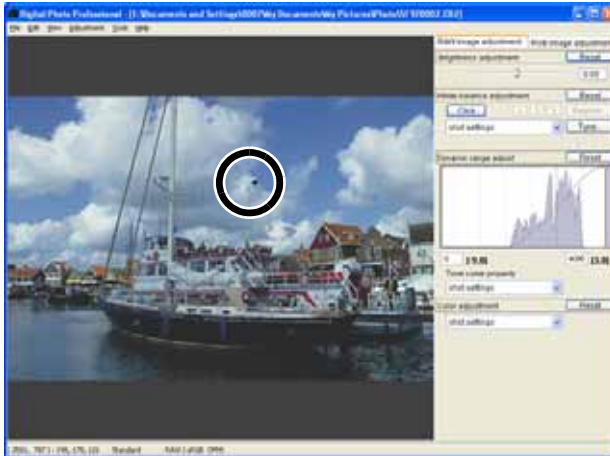
Makes white the standard for the part you selected and automatically adjusts the white balance.

1 Click the [Click] button.

→ When you move the cursor over the image, the cursor [↔] changes to [↔].



2 Click the part where is to be the standard.



- The white balance is adjusted so that the point clicked appears white.
- If you click on another point over the image, the white balance is adjusted again.
- When you finish this operation, click the [Click] button or right-click.



- The image is adjusted based on the average value of the range of 5 × 5 pixels from the clicked point.
- You can also adjust the white balance by clicking an achromatic color (neutral gray) part of the image.

Adjusting with the Color Wheel (1-26)

You can select a desired color from the color wheel to adjust the white balance. You can also specify the hue in the range of 0 to 359 (in 1-stop increments), and the saturation in the range of 0 to 255 (in 1-stop increments).

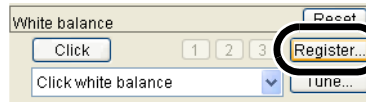
Registering Adjusted White Balance (Personal White Balance)

You can register up to three adjusted white balance data as personal white balance settings.

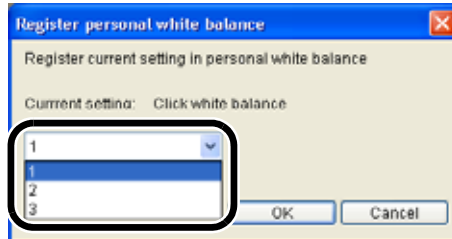
1 Adjust the white balance (2-13 to 2-15).

2 Click the [Register] button.

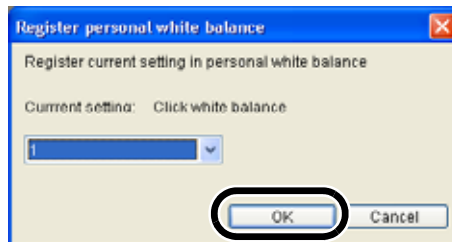
→ The [Register personal white balance] dialog box appears.



3 Select the button to be registered from the list.



4 Click the [OK] button.



Personal White Balance (1-27)

You can apply the registered personal white balance to images.

Adjusting the Dynamic Range

You can adjust the highlight and shadow points of images, and select the characteristics of the tone curve.

Adjusting the Shadow and Highlight Points

You can specify the shadow point (the darkest point) and highlight point (the brightest point) to adjust the gradation of images.

Adjust an image while viewing it.

Dynamic range adjust Reset

When you move the cursor to the left edge of the graph, the cursor [↔] changes to [↔]. Drag the slider right to adjust the shadow point.

When you move the cursor to the right edge of the graph, the cursor [↔] changes to [↔]. Drag the slider left to adjust the highlight point.

Enter a value in the range of 0 to 4094 (in 1-stop increments) to adjust the shadow point.

0 [-9.0]

4095 [3.8]

Enter a value in a range of 1 to 4095 (in 1-stop increments) to adjust the highlight point.

Selecting the Tone Curve

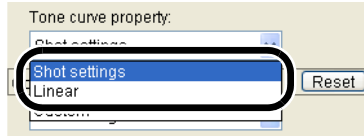
Select [Shot settings] or [Linear].

[Shot settings]:

Selects the tone curve used when shots were taken.

[Linear]:

Selects the linear tone curve.



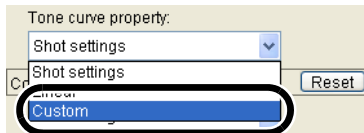
You can select linear processing when you wish to adjust the image separately in retouching software such as Photoshop.

Changing the Characteristics of the Tone Curve

You can select the characteristics of the tone curve from five types.

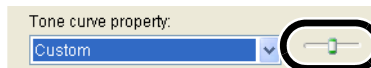
1 Select [Custom].

→ The slider appears.



2 Adjust an image while viewing it.

- The slider has 5 levels. Drag the slider left or right to select the characteristics.

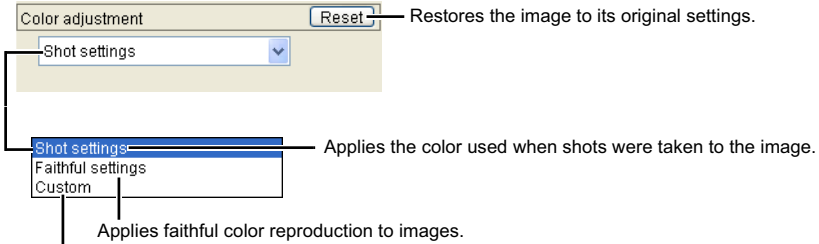




Adjusting the Color

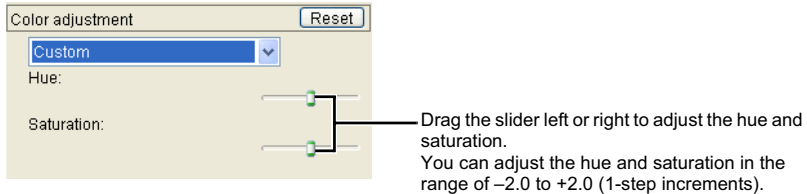
You can adjust the image tone.


1 Select [Shot settings], [Faithful settings], or [Custom].



The [Hue] and [Saturation] sliders appear. Use the next step to adjust the hue and saturation of images.

2 Adjust an image while viewing it.



 [Faithful settings], a feature of EOS DIGITAL cameras, are settings that are faithful to the original image. This setting adjusts colors so that the images that are taken in an ambient light of approx. 5200K can be colorimetrically faithful to the subject's color tones.

Performing Detailed Edits in the Edit Image Window



This chapter describes the functions of the edit image window, and how to display images and perform detailed edits on them.

The functions of the edit image window are the same as those of the main window (chapter 1) and of the edit window (chapter 2). For detailed instructions on operating these functions, refer to the page described with each function.

Displaying the Edit Image Window	3-2
---	------------

Displaying the Edit Image Window

In the edit image window, you can select one image from multiple images and perform detailed edits on the selected image.

- The functions of the edit image window are the same as those of the main window (chapter 1) and of the edit window (chapter 2). For detailed instructions on operating these functions, refer to the page described with each function.

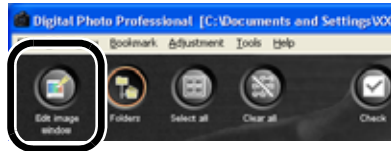
1 Select multiple images in the main window (1-7).

2 Click the [Edit image window] button.

→ The main window switches to the edit image window.

→ A low resolution image is displayed first, and then it switches to a high resolution image.

- Alternatively, you can display this window by selecting [View] menu
▶ [Edit in Edit image window].



3 Click the images in the Thumbnail image display area.

→ The selected images are displayed in the image display area.



4 Edit images and save them.

Edit Image Window

Toolbar

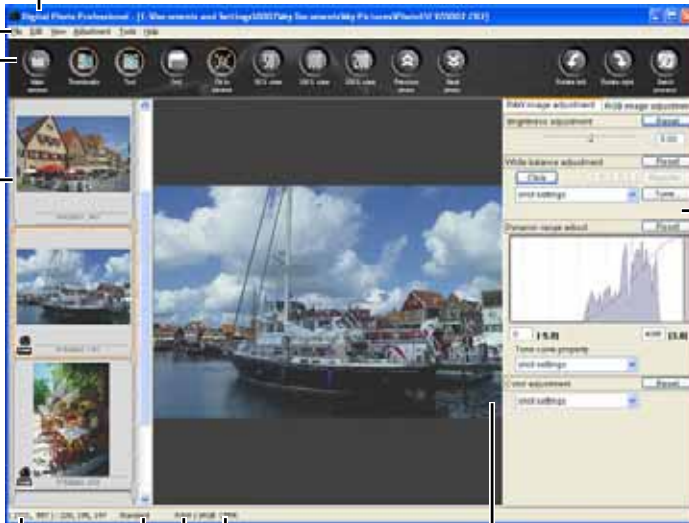
Menu bar

Displays the [File], [Edit], [View], [Adjustment], [Tools], and [Help] menus.

Path display

Displays the path of the drive, folder and file name that contain the currently displayed image.

Tool palette



Displays the coordinates of the cursor position and the RGB values (8-bit conversion) of an image.

Thumbnail image display area (3-2)

When you set CMYK simulation profile (1-45), [CMYK] is displayed.

Image display area

When you display an image in a larger size, you can change the display position by dragging the image.

Displays the color space of the image and the work color space. (1-29, 1-45).

Displays the operation mode (1-42).

- To exit the edit image window, click the [Main window] button.



- For some images, it may take some time to switch to the high resolution image.
- You can select whether the tool palette is displayed as another window or displayed within the same window (1-44).

Menu Bar

File menu

File		
1-33	Add recipe and save	Ctrl+S
1-33	Add recipe and save as...	Shift+Ctrl+S
1-34	Convert and save...	Ctrl+D
1-36	Batch process...	Ctrl+B
1-40	Print...	Ctrl+P
1-40	Print with Easy-PhotoPrint	Ctrl+E
	Delete from list	Alt+DEL
1-13	Info...	Ctrl+I
1-2	Exit	Alt+F4

Deletes the images from the thumbnail image display area.

Edit menu

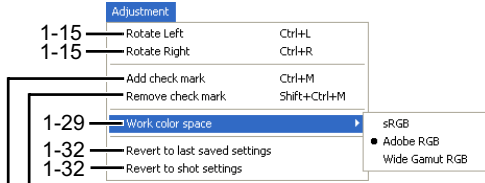
Edit		
1-30	Save recipe in file...	
1-30	Read recipe from file...	
1-31	Copy recipe to clipboard	
	Paste recipe	
1-30, 1-31	Paste recipe to all photos	

The copied recipe data is pasted to all images.

View menu

View			
	Return to main window	Ctrl+Left Arrow	Returns to the main window.
2-5	<input checked="" type="checkbox"/> Tool palette	Ctrl+T	Shows/hides the tool palette.
1-14	<input type="checkbox"/> Grid lines		
	<input type="checkbox"/> Toolbar		
	<input checked="" type="checkbox"/> Thumbnails		Shows/hides the thumbnail image display area.
	Change thumbnail position		Displays the thumbnail image display area either vertically or horizontally.
2-6	<input type="checkbox"/> Before/after comparison		
2-6	<input type="checkbox"/> Change up/down/left/right		
2-5	<input type="checkbox"/> Fit to window	Ctrl+F4	
2-5	<input type="checkbox"/> 50% view	Ctrl+1	
2-5	<input type="checkbox"/> 100% view	Ctrl+2	
2-5	<input type="checkbox"/> 200% view	Ctrl+3	
	Photo		
	Previous		Select the previous image.
	Next		Select the next image.
	First		Select the first image.
	Last		Select the last image.

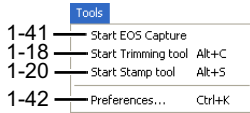
Adjustment menu



Removes the set check mark.

Sets a check mark for the image.

Tools menu



Help menu



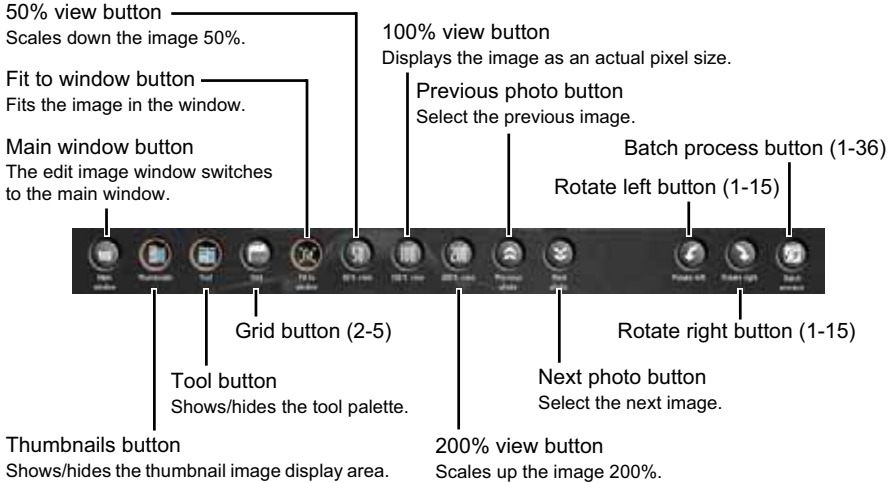
Displays the version information for Digital Photo Professional.



For the shortcut key list, see 4-5.



Toolbar



Tool Palette

RGB image adjustment tab sheet (2-7)

RAW image adjustment tab sheet (2-12)



Reference

4

This chapter provides troubleshooting, the instructions on uninstalling Digital Photo Professional, and shortcut key list to allow you to use Digital Photo Professional easily.

Troubleshooting	4-2
Uninstalling the Software	4-3
Shortcut Key List	4-4
Index	4-8

Troubleshooting

If you could not complete the installation correctly, or Digital Photo Professional does not work, or images are not displayed, consult the items described below.

- For instructions on installing and system requirements, refer to the “Software Guide”.

Could not complete installation correctly.

- **Are you using Windows XP under a setting other than [Computer administrator] or using Windows 2000 under a setting other than [Administrator]?**
 - You cannot install software if a user setting other than [Computer administrator] or [Administrator] is selected. Select the [Computer administrator] user setting in Windows XP or the [Administrator] user setting in Windows 2000. For detailed information on selecting the user setting, refer to the manuals supplied with your computer.
- **Is there sufficient hard disk space?**
 - 256 MB or more of hard disk space is required.
- **Are you using any operation system other than Windows XP and Windows 2000?**
 - Digital Photo Professional does not operate in Windows except for Windows XP and Windows 2000.

Digital Photo Professional does not work.

- **Does your computer meet the system requirements for Digital Photo Professional?**
 - Check the system requirements.
- **Is there enough memory (RAM)?**
 - Check the system requirements.
- **Is the screen resolution less than [1024 by 768 pixels]?**
 - Specify [1024 by 768 pixels] or more for the screen resolution.
- **Is the color quality less than [Medium (16 bit)]?**
 - Specify [Medium (16 bit)] or more for the color quality.
- **Are multiple applications running?**
 - Exit any application other than Digital Photo Professional. Even though the memory (RAM) that is recommended in the system requirements is installed in the computer, if other applications are running with Digital Photo Professional, the memory (RAM) may not be sufficient.

Could not display images with Digital Photo Professional.

- **Did you try to display images other than the image types that are supported by Digital Photo Professional?**
 - Check the supported images (10).

Uninstalling the Software

Follow the procedure below to uninstall Digital Photo Professional.

- Exit any application before uninstalling Digital Photo Professional.
- Log in using [Computer administrator] user setting in Windows XP or [Administrator] user setting in Windows 2000.
- To prevent computer malfunctions, always restart your computer after you have uninstalled Digital Photo Professional. Re-installing the software without first restarting your computer is particularly likely to result in computer malfunctions.

1 Select the [Start] button ▶ [Control Panel] ▶ [Add or Remove Programs].

- For Windows 2000, select the [Start] button ▶ [Settings] ▶ [Control Panel] ▶ double-click the [Add/Remove Programs] icon.
- The [Add or Remove Programs] dialog box (the [Add/Remove Programs] dialog box in Windows 2000) appears.

2 Select [Canon Utilities Digital Photo Professional x.x] from the software list, and then click the [Change/Remove] button.

- “x.x” represents the version of Digital Photo Professional.
- Confirm that [Change or Remove Programs] is selected.
- The [Add or Remove Programs] dialog box (the [Add/Remove Programs] dialog box in Windows 2000) appears.

3 Click the [OK] button.

- Digital Photo Professional is uninstalled.

Shortcut Key List

Main Window

Operation	Key	Operation	Key
Open in Edit window	Ctrl + O	Select RAW photos only	Alt + Ctrl + A
Add recipe and save	Ctrl + S	Select check marked photos only	Ctrl + Y
Add recipe and save as	Shift + Ctrl + S	Edit in Edit image window	Ctrl + Right Arrow
Save Thumbnail	Shift + Ctrl + T	Large thumbnail	Ctrl + 1
Convert and save	Ctrl + D	Middle thumbnail	Ctrl + 2
Batch process	Ctrl + B	Small thumbnail	Ctrl + 3
Print	Ctrl + P	Thumbnail with information	Ctrl + 4, Ctrl + 0
Print with Easy-PhotoPrint	Ctrl + E	Rotate Left	Ctrl + L
Delete	DEL	Rotate Right	Ctrl + R
Info	Ctrl + I	Add check mark	Ctrl + M
Exit	Alt + F4	Remove check mark	Shift + Ctrl + M
Cut	Ctrl + X	Start Trimming tool	Alt + C, Ctrl + N
Copy	Ctrl + C	Start Stamp tool	Alt + S
Paste	Ctrl + V	Start Rename tool	Alt + R
Select All	Ctrl + A	Preferences	Ctrl + K
Clear All	Shift + Ctrl + A	–	–

Edit Window

Operation	Key	Operation	Key
Add recipe and save	Ctrl + S	50% view	Ctrl + 1
Add recipe and save as	Shift + Ctrl + S	100% view	Ctrl + 2
Convert and save	Ctrl + D	200% view	Ctrl + 3
Print	Ctrl + P	Rotate Left	Ctrl + L
Info	Ctrl + I	Rotate Right	Ctrl + R
Close	Ctrl + W	Start Trimming tool	Alt + C, Ctrl + N
Tool palette	Ctrl + T	Start Stamp tool	Alt + S
Fit to window	Ctrl + 4, Ctrl + 0	Preferences	Ctrl + K

Edit Image Window

Operation	Key	Operation	Key
Add recipe and save	Ctrl + S	Fit to window	Ctrl + 4, Ctrl + 0
Add recipe and save as	Shift + Ctrl + S	50% view	Ctrl + 1
Convert and save	Ctrl + D	100% view	Ctrl + 2
Batch process	Ctrl + B	200% view	Ctrl + 3
Print	Ctrl + P	Rotate Left	Ctrl + L
Print with Easy-PhotoPrint	Ctrl + E	Rotate Right	Ctrl + R
Delete from list	Alt + DEL	Add check mark	Ctrl + M
Info	Ctrl + I	Remove check mark	Shift + Ctrl + M
Exit	Alt + F4	Start Trimming tool	Alt + C, Ctrl + N
Return to main window	Ctrl + Left Arrow	Start Stamp tool	Alt + S
Tool palette	Ctrl + T	Preferences	Ctrl + K

Trimming Window

Operation	Key	Operation	Key
Switch between full screen/ normal screen	Alt + Enter, F11	Reset the trimming range	ESC
Close the trimming window without saving the settings	Ctrl + W, Alt + F4	Move the trimming range	Up, Down, Left and Right Arrows
Display the previous image	Ctrl + Left Arrow	Enlarge/reduce the trimming range	Shift + Up, Down, Left and Right Arrows
Display the next image	Ctrl + Right Arrow	Set the level of opacity (Up: Brighter, Down: Darker)	Wheel up/down
Copy the trimming range	Ctrl + C	Image display (Up: Display the previous image, Down: Display the next image)	Ctrl + Wheel up/down
Paste the trimming range	Ctrl + V	Display the previous image	Page Up
Undo the trimming settings	Ctrl + Z	Display the next image	Page Down
Save the settings and close the trimming window	Alt + S	–	–

Stamp Tool Window

Operation	Key	Operation	Key
Switch between full screen/ normal screen	Alt + Enter, F11	Revert to the original condition before any corrections were performed	Ctrl + Shift + Z
Close the stamp tool window without applying the content of the corrections	Ctrl + W, Alt + F4	Apply the content of the corrections and close the stamp tool window	Alt + S
Display the previous image	Left Arrow, Ctrl + Up Arrow	Set the radius of copy destination in 5 pixel units	Wheel up/down
Display the next image	Right Arrow, Ctrl + Down Arrow	Set the radius of copy destination in 1 pixel units	Shift + Wheel up/down
Copy the content of the corrections	Ctrl + C	Select copy source (only available when in 100% view)	Alt + click
Paste the content of the corrections copied (only available when an image with the same number of pixels for length and width is selected)	Ctrl + V	Change the display position after copy source is selected (only available when in 100% view)	Space + drag
Redo the previous correction	Ctrl + Y	Set the pen type to brush	B
Redo all the corrections	Ctrl + Shift + Y	Set the pen type to pencil	P
Undo the previous action	Ctrl + Z	–	–

Index

A

- Adjusting the Brightness 1-17, 2-11
- Adjusting the Brightness (RAW) 1-28, 2-13
- Adjusting the Color 2-18
- Adjusting the Contrast 2-11
- Adjusting the Dynamic Range 2-16
- Adjusting the Hue 2-11
- Adjusting the Saturation 2-11
- Adjusting the Shadow and Highlight Points 2-16
- Adjusting the Tone Curve 2-8
- Adjusting the White Balance 1-23, 2-13
- Adjusting with the Color Wheel 1-26, 2-15

C

- Changing File Names in a Single Operation 1-38
- Changing the Characteristics of the Tone Curve 2-17
- Click White Balance Function 1-16, 2-10
- Click White Balance Function (RAW) 1-27, 2-14
- Copying Recipes and Applying to Other Images 1-31
- Correcting an Image 1-20

D

- Deleting Images 1-10
- Displaying Image Information 1-13
- Displaying Images 1-6
- Displaying Images in EOS Capture 1-41
- Displaying the Edit Image Window .. 1-12, 3-2
- Displaying the Edit Window 1-12, 2-2
- Displaying the Edited Image and the Original at the Same Time 2-6
- Displaying the Grid lines 2-5

E

- Edit Image Window 3-3
- Edit Window 2-2
- Editing Images 1-15, 2-7
- Editing RAW Images 1-22, 2-12
- Exiting Digital Photo Professional 1-2
- Exiting the Edit Image Window 3-3

- Exiting the Edit Window 2-2

I

- Image with Information Display 1-11
- Information Displayed with Images 1-5

L

- Loading and Pasting Recipes 1-30

M

- Main Features and Structure 6
- Main Window 1-2

O

- Operation Flow 7

P

- Personal White Balance 1-27, 2-15
- Printing Images 1-40
- Printing with Easy-PhotoPrint 1-40

R

- Registering Adjusted White Balance (Personal White Balance) 2-15
- Reverting Edited Images to Their Original Condition
 - Reverting to Last Saved Settings 1-32
 - Reverting to Shoot Settings 1-32
- Rotating Images 1-15

S

- Saving Edited Images
 - Converting and Saving Images in a Single Operation (Batch-processing) 1-36
 - Converting and Saving RAW Images while Renaming Them 1-34
 - Saving a Thumbnail of the Image 1-33
 - Saving and Renaming 1-33
 - Saving by Overwriting 1-33
- Saving the Recipes 1-30
- Selecting Images 1-7
- Selecting the Display Size
 - Displaying the Edit Window 2-5
 - Edit Image Display 3-6
 - Thumbnail Display 1-11
- Selecting the Tone Curve 2-17
- Selecting the White Balance 1-24, 2-13

Shortcut Key List	4-4
Sorting Images	1-13
Specifying Color Space	1-29
Specifying the Color Temperature .	1-25, 2-13
Specifying the Preferences	1-42
Starting up Digital Photo Professional	1-2
Supported Images	10

T

Tool Palette	
RAW image adjustment tab sheet .	2-4, 3-6
RGB image adjustment tab sheet ..	2-4, 3-6
Transferring Images to Retouching	
Software	1-39
Trimming an Image	1-18
Troubleshooting	4-2

U

Uninstalling the Software	4-3
---------------------------------	-----